

Clarity – Ordering Guide

This document shall provide basic guidelines on the compatibility of available Clarity Software products and an alphabetical list of part numbers (p/n).

This document is further referenced to following documents:

- D004 –List of controlled instruments
- D007 - Clarity-vs-Clarity-Lite-Comparison
- D048 - Clarity-configuration-examples

PC requirements: Windows OS compatibility and PC requirements are outlined at www.dataapex.com in the corresponding product sections.

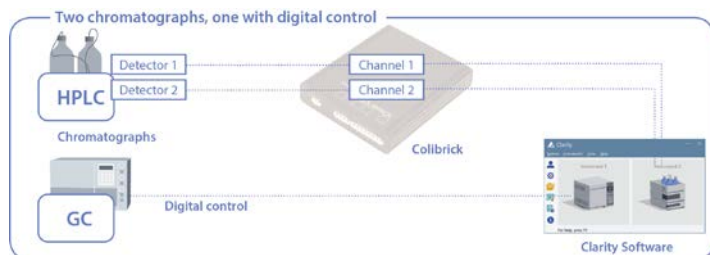
Clarity SW (including Lite and Offline versions) is **multilingual**. Available are English, German, French, Russian, Spanish and Chinese. The translation is limited to the main SW, extensions and modules (SW Help and documentation are in EN).

Clarity Chromatography SW, p/n C50

Multi-instrument version, extensible (controls and extensions), suitable for the regulated environment

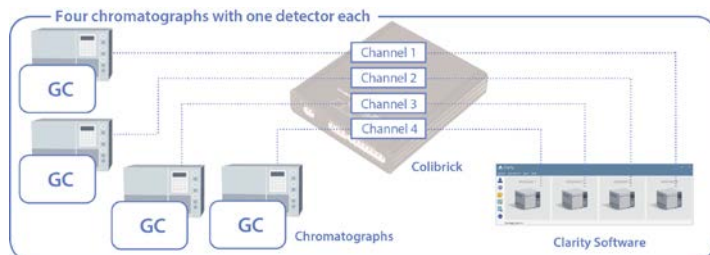
| Compatible products | Description |
|---|---|
| <p>Time-base extensions:</p> <ul style="list-style-type: none"> • Add on Instrument SW, p/n C55 (max 3 per one C50) | <p>A maximum of four instruments may be configured per Clarity Installation <i>Please refer to notes*</i></p> |
| <p>Optional Extensions: (each one per C50)</p> <ul style="list-style-type: none"> • SST System Suitability Test, p/n A22 • GPC Data Processing, p/n A28 • PDA Data Processing, p/n A29 • EA SW Module, p/n A30 • CE SW Module, p/n A31 • NGA Calculations, p/n A32 • DHA Calculations, p/n A33 • MS Data Processing, p/n A38 | <p>Extensions and Controls are global, all instruments licensed within one SW installation can use them</p> <p>Compatibility of control modules shall be always confirmed in datasheet D004 and a corresponding control manual has to be checked for specific requirements (cable, interfaces etc.)</p> |
| <p>Optional Control Modules: (each one per C50)</p> <ul style="list-style-type: none"> • AS Control, p/n A26 • LC Control, p/n A24 • GC Control, p/n A23 | <p>Data Processing SW modules do not include control, this has to be ordered separately e.g. for MS, PDA</p> |
| <p>Compatible A/D Converters: any combination of</p> <ul style="list-style-type: none"> • Colibrick External USB, p/n U31-4 | <p>A/D converters are supplied with cables (open ends, 3m). Cable modification (p/n KBSP) or extensions (p/n KP) are available.</p> |

Clarity full version: Configuration examples:



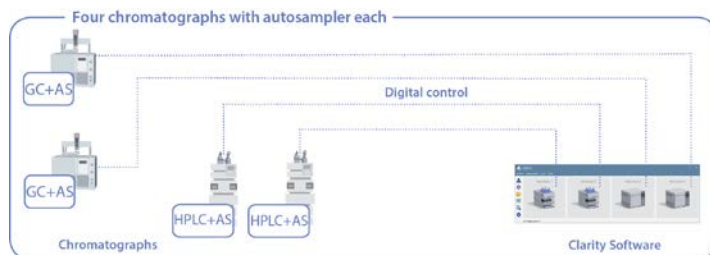
Configuration:

- p/n C50
- p/n C55
- p/n U32
- p/n A23



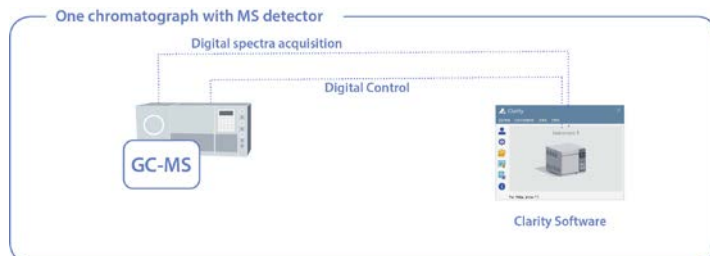
Configuration:

- p/n C50
- p/n C55 3x
- p/n U34



Configuration:

- p/n C50
- p/n C55 3x
- p/n A23 1x
- p/n A24 1x
- p/n A26 1x



Configuration:

- p/n C50
- p/n A23
- p/n A38

A23 covers both GC and MS control modules, refer to D004

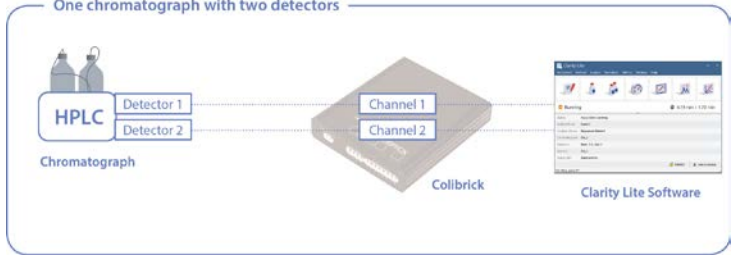
* Notes:

Despite Clarity can connect 4 Instruments simultaneously, such configuration may not be practical in cases when all 4 instruments should be running simultaneously with short analyses (less than 20 minutes) due to the following issues:

- Method sending for some GC and HPLC systems is a lengthy operation and during this time Clarity may not be operable.
- During chromatogram processing, after the end of acquisition the Clarity may again not respond for some time.
- If there is more than one operator there may be struggle for keyboard control.
- The demands for processing time/memory may exceed the available resources on weak computers.

Clarity Lite Chromatography SW, p/n C40

Entry solution, simplified version for 1 Instrument (time base), analog data acquisition only (max 4 channels), data processing, basic synchronization with AS.

| Compatible products | Description |
|--|--|
| <p>Optional Extensions & Control modules:</p> <ul style="list-style-type: none"> • None <p>Compatible A/D converters:</p> <p>Only <u>ONE</u> of the following plug and play A/D converters.</p> <ul style="list-style-type: none"> • Colibrick External USB, p/n U31-4 <p>• Example:</p>  <p>The diagram illustrates a setup for one chromatograph with two detectors. On the left, an HPLC system is shown with two detectors, labeled 'Detector 1' and 'Detector 2'. These are connected to a central Colibrick A/D converter module, which has two channels, 'Channel 1' and 'Channel 2'. The Colibrick module is then connected to the Clarity Lite Software interface on the right, which displays a control panel with various icons and data fields.</p> | <p>The Clarity Lite p/n C40 can be upgraded to Clarity Single Instrument (C50) using p/n C540.</p> <p>A/D converters are supplied with cables (open ends, 3m). Cable modification (p/n KBSP) or extensions (p/n KP) are available.</p> <p>Configuration:</p> <ul style="list-style-type: none"> • p/n C40 + U32 |

Clarity Offline Chromatography SW p/n C59

Version for Offline data processing, no data acquisition.

GC, LC and AS Control Modules are automatically enabled in each **Clarity Offline**.

| Compatible products | Description |
|--|---|
| <p>Optional Extensions:</p> <ul style="list-style-type: none"> • SST System Suitability Test, p/n A22 • GPC Data Processing, p/n A28 • PDA Data Processing, p/n A29 • EA SW Module, p/n A30 • CE SW Module, p/n A31 • NGA Calculations, p/n A32 • DHA Calculations, p/n A33 • MS Data Processing, p/n A38 | <p>Version for Offline data processing, no data acquisition</p> |

List of Part numbers (p/n)

Alphabetical export from pricelist

| p/n | Name | Description | Field | Type |
|----------|-----------------------------------|---|-------------|-------------|
| A22 | SST | SW module for System Suitability Test | SW | Extension |
| A23 | GC Control | SW module for GC control | SW | Control |
| A24 | LC Control | SW module for HPLC/CE control (pump, detector, etc.) | SW | Control |
| A26 | AS Control | SW module for AS control | SW | Control |
| A28 | GPC | SW module for GPC/SEC data processing | SW | Extension |
| A29 | PDA | SW module for PDA data processing | SW | Extension |
| A30 | EA | SW module for Elemental Analysis | SW | Extension |
| A31 | CE | SW module for Capillary Electrophoresis | SW | Extension |
| A32 | NGA | SW module for NGA calculations | SW | Extension |
| A33 | DHA | SW module for DHA calculations | SW | Extension |
| A38 | MS QUAD | SW module for MS data processing | SW | Extension |
| B30 | Zebrick | USB D/A & D/f converter (includes KBCB cable) | HW | Basic |
| C40 | Clarity Lite | Simplified, Single Instrument SW | SW | Solution |
| C40-CHS | Clarity Lite CHS | Simplified, Single Instrument SW, Chinese ver. | SW | Solution |
| C50 | Clarity | Extensible, Single Instrument SW, CFR21/GLP ready | SW | Solution |
| C50-CHS | Clarity CHS | Extensible, Single Instrument SW, CFR21/GLP ready, Chinese ver. | SW | Solution |
| C50-I | Clarity Bundle | 2 Instr. SW, CFR21/GLP ready, SST incl. | SW | Solution |
| C540 | from Clarity Lite | to Clarity, Single Instrument | SW | Upgrade |
| C540-CHS | from Clarity Lite CHS | to Clarity CHS, Single Instrument | SW | Upgrade |
| C540-I | from Clarity Lite | to Clarity, 2 Instruments, SST | SW | Upgrade |
| C55 | Clarity Add-on | Single Instrument Add-on | SW | Extension |
| C550 | Clarity Add-on | for C532 only | SW | Upgrade |
| C59 | Clarity Offline | Offline version for data processing | SW | Solution |
| C59-CHS | Clarity CHS Offline | Offline version for data processing, Chinese ver. | SW | Solution |
| C600 | Clarity version < 2.4 | to Clarity, HW key included | SW | Upgrade |
| CVK | Validation Kit | Peak generator and SW methods for OQ | HW | Basic |
| CVR | Validator recalibration | | Services | product |
| DID01 | Digital input device | for Ecom's detector Control | Accessories | Interface |
| IGLN1 | RS232/GSIOC Converter | for Gilson Control | Accessories | Interface |
| IGLN2 | Adaptor GSIOC | Cable for two Gilson devices | Accessories | Interface |
| KB71 | Cable for A/D, 3 meters | 1 channel | Accessories | Cable |
| KB72 | Cable for A/D, 3 meters | 2 channels | Accessories | Cable |
| KB74 | Cable for A/D, 3 meters | 4 channels | Accessories | Cable |
| KBCB | Cable for CB20 card, 3 meters | 2x Voltage, 2x Frequency | Accessories | Cable |
| KBSP | Cable modification | Customized connector etc. | Accessories | Cable |
| KP | Cable extension | (Specify length in m), price per m and channel | Accessories | Cable |
| MC01 | MultiCOM | 1x USB to 6x RS232 Converter | Accessories | Interface |
| OPT01 | OPT-USB | Optical to USB adaptor for Shimadzu Control | Accessories | Interface |
| S001 | SDK/Uni Ruby Support – annual fee | includes drivers'/scripts' testing & incorporation | Services | Development |

| p/n | Name | Description | Field | Type |
|------|-----------------------------|---|-------------|---------|
| S003 | Travel | per km | Services | Product |
| S005 | Validation services | per station | Services | Product |
| S008 | Services on site | per hour | Services | Product |
| S016 | HW key exchange | Exchange of damaged/obsolete HW key | Services | Product |
| S021 | Remote services | Teamviewer/phone support, per hour | Services | Product |
| S024 | Software familiarization | Web-based: individual for one end-user (2 hours) | Services | Product |
| S028 | UNI-Ruby script testing | One-of driver testing | Services | Product |
| S030 | Validator – custom data set | Custom data set | Services | Product |
| S031 | Validation training, online | individual (2 hours), add on for Clarity training | Services | Product |
| SKxx | Communication cable | (Specify cable type - see our documentation) | Accessories | Cable |
| SV9 | Terminal board | Box, cable included | Accessories | Cable |
| U31 | Colibrick | External USB, 1 channel | HW | Basic |
| U32 | Colibrick | External USB, 2 channels | HW | Basic |
| U34 | Colibrick | External USB, 4 channels | HW | Basic |