

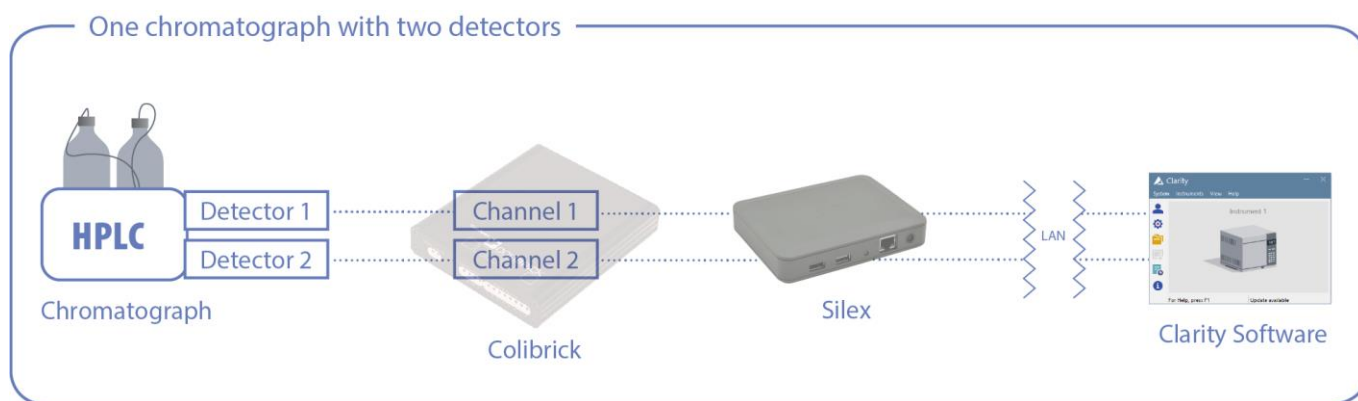
## Using Silex LAN-USB adapter with Colibrick A/D converter and Clarity

Silex LAN-USB adapter is a device which allows you to connect a remote USB device to your PC over LAN (local area network). It is convenient solution for a chromatograph (detector) with an analogue output located in a laboratory and the PC with installed Clarity is in a remote office. If there is a LAN available in both places, you can simply connect the USB output of your Colibrick A/D converter to the Silex USB/LAN device. There is a special SW you have to install on your PC which locates the Silex USB/LAN converter on the network and allows you to virtually connect the Colibrick A/D converter to your PC. As the last step you can add the Colibrick to Clarity System Configuration as usually.

### Note:

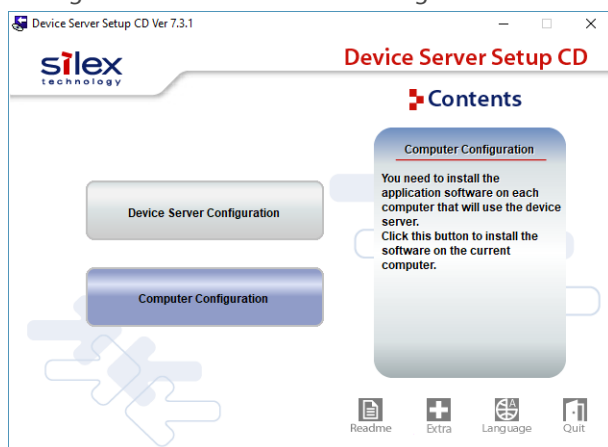
- Tested with Silex DS-600, DS-510, SX-3000GB and DS-3000U1 models.

The picture below explains how the devices and SW are connected:



### How to proceed with installation and connection

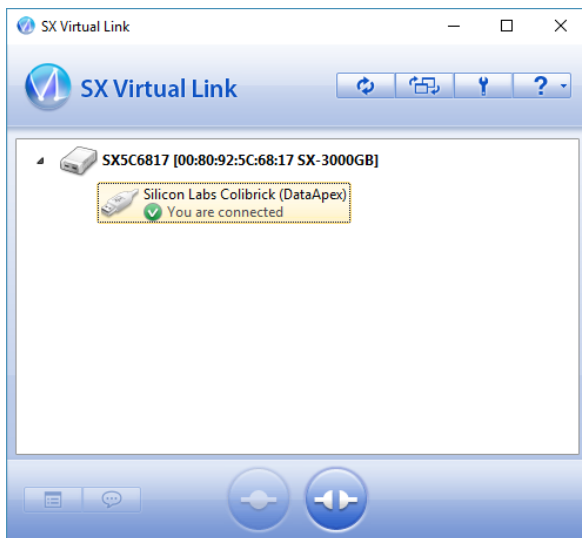
1. Connect the power source and LAN cable to the Silex device. On the opposite site it is possible to connect up to 2 USB cables from A/D converters.
2. Run the installation CD supplied with the Silex device and select the **Computer Configuration** (Device Server Configuration serves to name and organize the Silex devices in network, typically not needed).



3. After starting the SX Virtual Link software, it will detect and display all the Silex adapters connected to the local network. It will also display all devices connected to its USB ports. Selecting the device and pressing **Connect** will connect the device to the local computer. Note the respective device drivers must be installed on the local computer first.



4. When the connection is successful, you will see the USB device in the Windows Device Manager and you can configure it in Clarity same way is it would be connected directly to the local computer.
- 5.



#### Other USB devices you can connect using the Silex USB/LAN converter

1. **HW-key (dongle)** can be also connected to the Silex device if you want to share the HW key on multiple PCs without taking it with you when moving between various Clarity Chromatography Stations. Note the HW-key can be used only on one Clarity station at the same time. Note DS-600 is recommended for this purpose, new RkNDUSB keys are not supported by the older models DS-510, SX-3000GB and DS-3000U1.
2. **MultiCOM** connected to the Silex device will allow to remotely connect up to 6 laboratory instruments communicating over the COM port.