

## Quick Start Guide

SSI-PI USB Interface provide easiest way to control SSI/LabAlliance pumps from present day computers where serial port may be unavailable. Unlike conventional USB to RS232 converters, SSI-PI interface contains special RJ11 terminated cable. With the specific name and easy-to-read serial number is very easy to recognize the interface in the system. The hardware solution is based on reliable FTDI FT232R chip.



Royalty free drivers are available for all current operating systems. Microsoft Windows® drivers are WHQL certified and they are also available through Windows Update service.

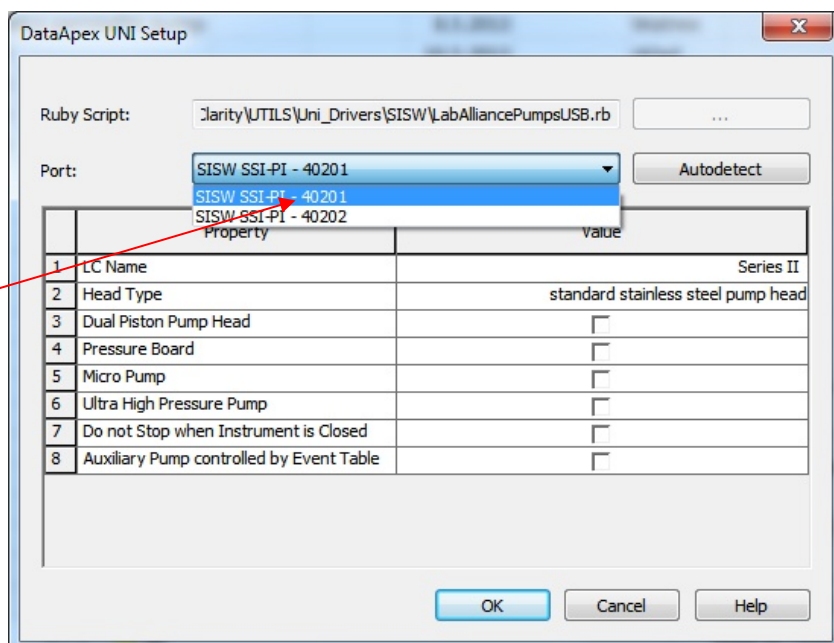
Free USB terminal application, LabAlliance pump drivers for Clarity CDS and Windows drivers are downloadable from the SISw website.

### Clarity CDS Configuration

Modified UNI Ruby script allows direct USB communication of Clarity LC Control module with LabAlliance pumps without necessity of virtual com port. Unique interface name (SISW SSI-PI) and serial number simplify the pump setup. In the Clarity System|Configuration click Add... button and locate the correct UNI Ruby script (LabAlliancePumpsUSB.rb) in the UTILS\Uni\_Drivers\SISW\ folder. All currently available SSI-PI interfaces are listed in the *Port* list box. Read the interface serial number (it is located on the label) and select appropriate interface with the same serial number reported in the list box.

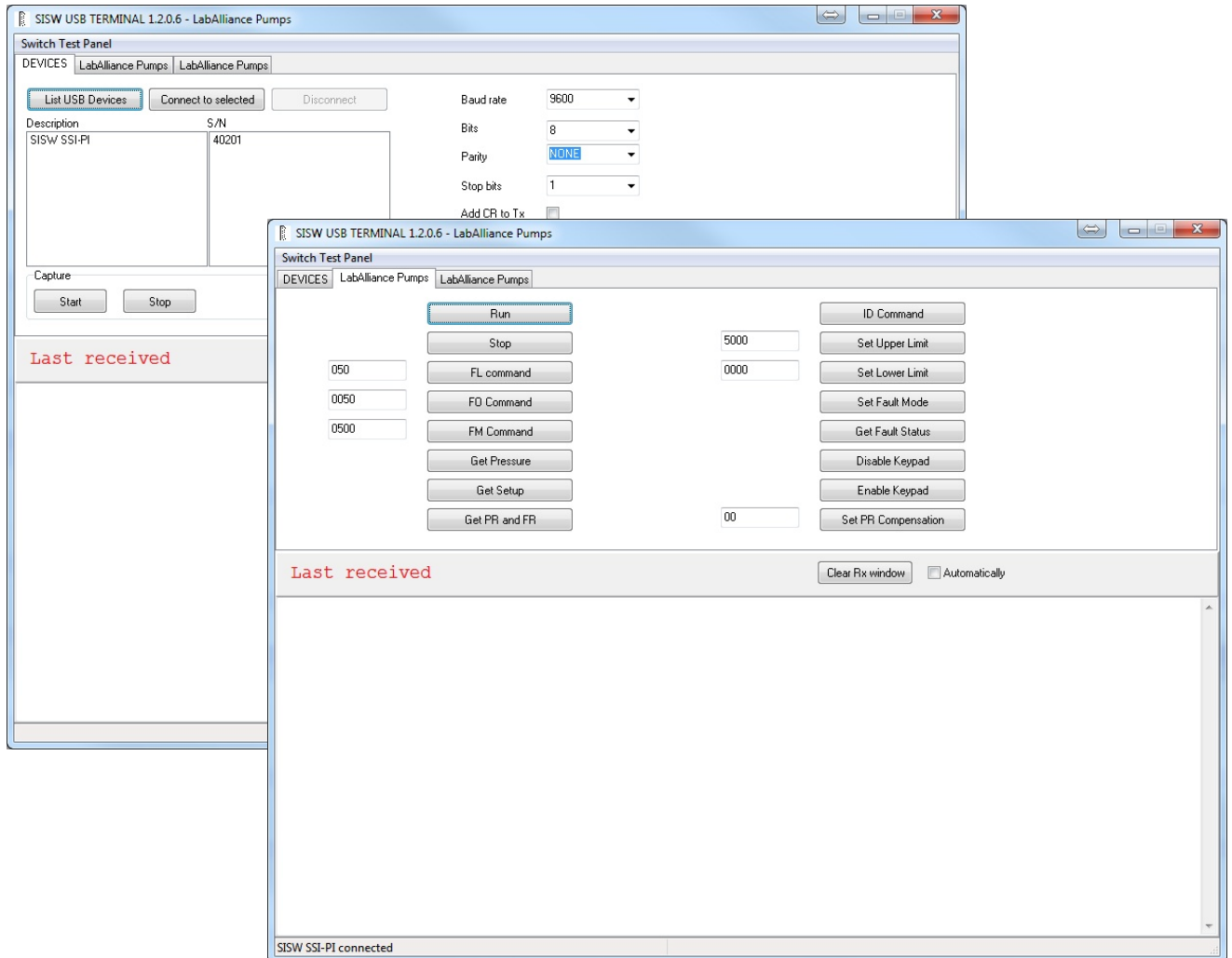


Serial numbers on the interface label and in the port list are identical



## USB Terminal Application

SISW USB Terminal utility for SSI/LabAlliance pumps encapsulates all commands for pump setup and control. Communication with pump is then self explaining and user friendly. Command list is defined in the configuration file and can be easily modified according to specific requirements. USB Terminal utility customized for LabAlliance pumps is downloadable from the website free of charge.



## Specification

<b>Power Supply</b>	Computer USB Port
<b>Software</b>	USB Drivers, Clarity UNI Ruby script for SSI/LabAlliance Pumps, USB Terminal Downloadable from website
<b>Cable Length</b>	1.4 m from PC to pump

## Ordering Information

P/N	Description
33-0502	SSI-PI, USB Interface for SSI/LabAlliance Pumps

Science Instruments and Software, s.r.o.  
Fetrovská 59  
160 00 Praha 6, Czech Republic

Phone: +420 246 037 483  
Fax: +420 246 030 500  
E-mail: info@sisw.cz

... visit us at  
[www.sisw.eu](http://www.sisw.eu)