

## Clarity – Ordering Guide

This document shall provide basic guidelines on the compatibility of available Clarity Software products and an alphabetical list of part numbers (p/n).

This document is further referenced to following documents:

- D004 –List of controlled instruments
- D007 - Clarity-vs-Clarity-Lite-Comparison
- D048 - Clarity-configuration-examples

PC requirements: Windows OS compatibility and PC requirements are outlined at [www.dataapex.com](http://www.dataapex.com) in the corresponding product sections.

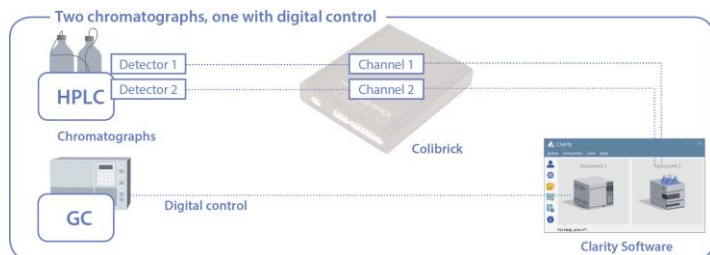
Clarity SW (including Lite and Offline versions) is **multilingual**. Available are English, German, French, Russian, Spanish and Chinese. The translation is limited to the main SW, extensions and modules (SW Help and documentation are in EN).

## Clarity Chromatography SW, p/n C50

Multi-instrument version, extensible (controls and extensions), suitable for the regulated environment

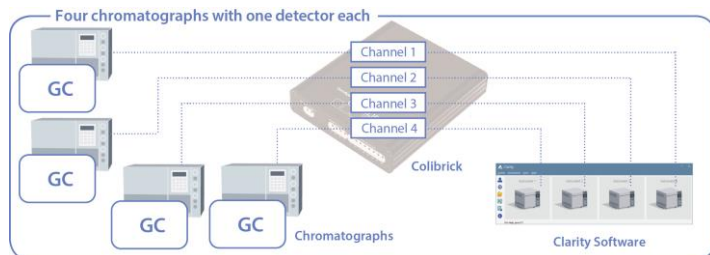
| Compatible products   | Description   |
|---|---|
| <p><b>Time-base extensions:</b></p> <ul style="list-style-type: none"> <li>• Add on Instrument SW, <a href="#">p/n C55</a> (max 3 per one <a href="#">C50</a>)</li> </ul>   | <p>A maximum of four instruments may be configured per Clarity Installation<br/><i>Please refer to notes*</i></p>   |
| <p><b>Optional Extensions:</b><br/>(each one per <a href="#">C50</a>)</p> <ul style="list-style-type: none"> <li>• SST System Suitability Test, <a href="#">p/n A22</a></li> <li>• GPC Data Processing, <a href="#">p/n A28</a></li> <li>• PDA Data Processing, <a href="#">p/n A29</a></li> <li>• EA SW Module, <a href="#">p/n A30</a></li> <li>• CE SW Module, <a href="#">p/n A31</a></li> <li>• NGA Calculations, <a href="#">p/n A32</a></li> <li>• DHA Calculations, <a href="#">p/n A33</a></li> <li>• MS Data Processing, <a href="#">p/n A38</a></li> </ul> | <p>Extensions and Controls are global, all instruments licensed within one SW installation can use them</p> <p>Compatibility of control modules shall be always confirmed in datasheet D004 and a corresponding control manual has to be checked for specific requirements (cable, interfaces etc.)</p> |
| <p><b>Optional Control Modules:</b><br/>(each one per <a href="#">C50</a>)</p> <ul style="list-style-type: none"> <li>• AS Control, <a href="#">p/n A26</a></li> <li>• LC Control, <a href="#">p/n A24</a></li> <li>• GC Control, <a href="#">p/n A23</a></li> </ul>  | <p>Data Processing SW modules do not include control, this has to be ordered separately e.g. for MS, PDA</p>  |
| <p><b>Compatible A/D Converters:</b> any combination of</p> <ul style="list-style-type: none"> <li>• Colibrick External USB, <a href="#">p/n U31-4</a></li> </ul>   | <p>A/D converters are supplied with cables (open ends, 3m). Cable modification (<a href="#">p/n KBSP</a>) or extensions (<a href="#">p/n KP</a>) are available.</p>   |

### Clarity full version: Configuration examples:



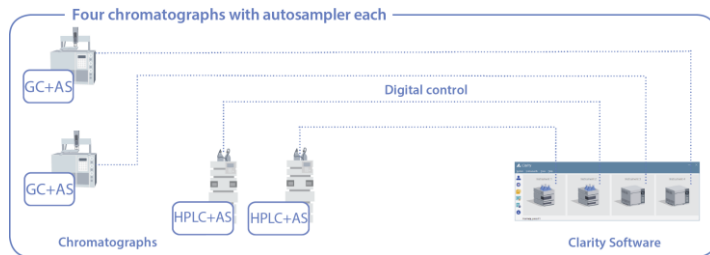
#### Configuration:

- p/n C50
- p/n C55
- p/n U32
- p/n A23



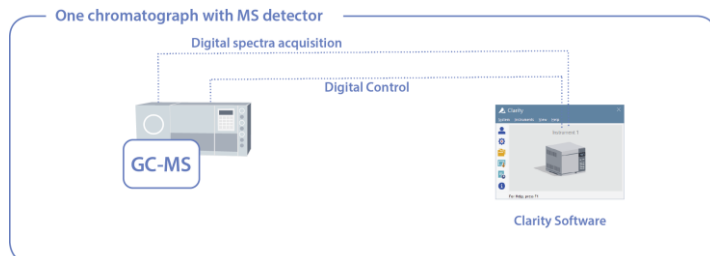
#### Configuration:

- p/n C50
- p/n C55 3x
- p/n U34



#### Configuration:

- p/n C50
- p/n C55 3x
- p/n A23 1x
- p/n A24 1x
- p/n A26 1x



#### Configuration:

- p/n C50
- p/n A23
- p/n A38

A23 covers both GC and MS control modules, refer to D004

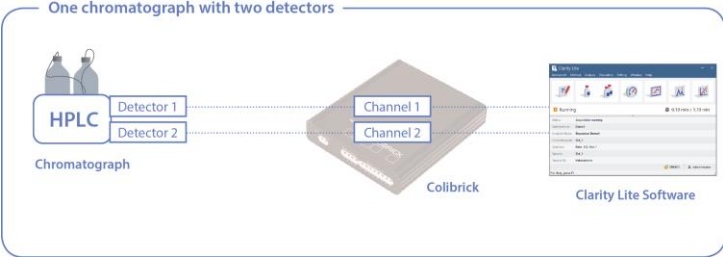
### \* Notes:

Despite Clarity can connect 4 Instruments simultaneously, such configuration may not be practical in cases when all 4 instruments should be running simultaneously with short analyses (less than 20 minutes) due to the following issues:

- Method sending for some GC and HPLC systems is a lengthy operation and during this time Clarity may not be operable.
- During chromatogram processing, after the end of acquisition the Clarity may again not respond for some time.
- If there is more than one operator there may be struggle for keyboard control.
- The demands for processing time/memory may exceed the available resources on weak computers.

## Clarity Lite Chromatography SW, p/n C40

Entry solution, simplified version for 1 Instrument (time base), analog data acquisition only (max 4 channels), data processing, basic synchronization with AS.

| Compatible products   | Description  |
|---|--|
| <p><b>Optional Extensions &amp; Control modules:</b></p> <ul style="list-style-type: none"> <li>• None</li> </ul> <p><b>Compatible A/D converters:</b></p> <p>Only <u>ONE</u> of the following plug and play A/D converters.</p> <ul style="list-style-type: none"> <li>• Colibrick External USB, p/n U31-4</li> </ul> <p>• <b>Example:</b></p>  <p>The diagram illustrates a system configuration. On the left, a box labeled 'Chromatograph' contains 'HPLC' and two 'Detector' boxes (Detector 1 and Detector 2). Dotted lines connect these detectors to a central 'Colibrick' device, which has two 'Channel' boxes (Channel 1 and Channel 2). Another dotted line connects the Colibrick device to a 'Clarity Lite Software' window on the right.</p> | <p>The Clarity Lite p/n C40 can be upgraded to Clarity Single Instrument (C50) using p/n C540.</p> <p>A/D converters are supplied with cables (open ends, 3m). Cable modification (p/n KBSP) or extensions (p/n KP) are available.</p> <p>Configuration:</p> <ul style="list-style-type: none"> <li>• p/n C40 + U32</li> </ul> |

## Clarity Offline Chromatography SW p/n C59

Version for Offline data processing, no data acquisition.

**GC, LC and AS Control Modules** are automatically enabled in each **Clarity Offline**.

| Compatible products  | Description   |
|--|---|
| <p><b>Optional Extensions:</b></p> <ul style="list-style-type: none"> <li>• SST System Suitability Test, p/n A22</li> <li>• GPC Data Processing, p/n A28</li> <li>• PDA Data Processing, p/n A29</li> <li>• EA SW Module, p/n A30</li> <li>• CE SW Module, p/n A31</li> <li>• NGA Calculations, p/n A32</li> <li>• DHA Calculations, p/n A33</li> <li>• MS Data Processing, p/n A38</li> </ul> | <p>Version for Offline data processing, no data acquisition</p> |

## List of Part numbers (p/n)

### Alphabetical export from pricelist

| p/n      | Name                              | Description   | Field       | Type        |
|----------|-----------------------------------|---|-------------|-------------|
| A22      | SST                               | SW module for System Suitability Test                           | SW          | Extension   |
| A23      | GC Control                        | SW module for GC control  | SW          | Control     |
| A24      | LC Control                        | SW module for HPLC/CE control (pump, detector, etc.)            | SW          | Control     |
| A26      | AS Control                        | SW module for AS control  | SW          | Control     |
| A28      | GPC                               | SW module for GPC/SEC data processing                           | SW          | Extension   |
| A29      | PDA                               | SW module for PDA data processing                               | SW          | Extension   |
| A30      | EA                                | SW module for Elemental Analysis                                | SW          | Extension   |
| A31      | CE                                | SW module for Capillary Electrophoresis                         | SW          | Extension   |
| A32      | NGA                               | SW module for NGA calculations                                  | SW          | Extension   |
| A33      | DHA                               | SW module for DHA calculations                                  | SW          | Extension   |
| A38      | MS QUAD                           | SW module for MS data processing                                | SW          | Extension   |
| B30      | Zebrick                           | USB D/A & D/f converter (includes KBCB cable)                   | HW          | Basic       |
| C40      | Clarity Lite                      | Simplified, Single Instrument SW                                | SW          | Solution    |
| C40-CHS  | Clarity Lite CHS                  | Simplified, Single Instrument SW, Chinese ver.                  | SW          | Solution    |
| C50      | Clarity                           | Extensible, Single Instrument SW, CFR21/GLP ready               | SW          | Solution    |
| C50-CHS  | Clarity CHS                       | Extensible, Single Instrument SW, CFR21/GLP ready, Chinese ver. | SW          | Solution    |
| C50-I    | Clarity Bundle                    | 2 Instr. SW, CFR21/GLP ready, SST incl.                         | SW          | Solution    |
| C540     | from Clarity Lite                 | to Clarity, Single Instrument                                   | SW          | Upgrade     |
| C540-CHS | from Clarity Lite CHS             | to Clarity CHS, Single Instrument                               | SW          | Upgrade     |
| C540-I   | from Clarity Lite                 | to Clarity, 2 Instruments, SST                                  | SW          | Upgrade     |
| C55      | Clarity Add-on                    | Single Instrument Add-on  | SW          | Extension   |
| C550     | Clarity Add-on                    | for C532 only   | SW          | Upgrade     |
| C59      | Clarity Offline                   | Offline version for data processing                             | SW          | Solution    |
| C59-CHS  | Clarity CHS Offline               | Offline version for data processing, Chinese ver.               | SW          | Solution    |
| C600     | Clarity version < 2.4             | to Clarity, HW key included                                     | SW          | Upgrade     |
| CVK      | Validation Kit                    | Peak generator and SW methods for OQ                            | HW          | Basic       |
| CVR      | Validator recalibration           |   | Services    | product     |
| DID01    | Digital input device              | for Ecom's detector Control                                     | Accessories | Interface   |
| IGLN1    | RS232/GSIOC Converter             | for Gilson Control  | Accessories | Interface   |
| IGLN2    | Adaptor GSIOC                     | Cable for two Gilson devices                                    | Accessories | Interface   |
| KB71     | Cable for A/D, 3 meters           | 1 channel   | Accessories | Cable       |
| KB72     | Cable for A/D, 3 meters           | 2 channels  | Accessories | Cable       |
| KB74     | Cable for A/D, 3 meters           | 4 channels  | Accessories | Cable       |
| KBCB     | Cable for CB20 card, 3 meters     | 2x Voltage, 2x Frequency  | Accessories | Cable       |
| KBSP     | Cable modification                | Customized connector etc.                                       | Accessories | Cable       |
| KP       | Cable extension                   | (Specify length in m), price per m and channel                  | Accessories | Cable       |
| MC01     | MultiCOM                          | 1x USB to 6x RS232 Converter                                    | Accessories | Interface   |
| OPT01    | OPT-USB                           | Optical to USB adaptor for Shimadzu Control                     | Accessories | Interface   |
| S001     | SDK/Uni Ruby Support – annual fee | includes drivers'/scripts' testing & incorporation              | Services    | Development |

| p/n  | Name                        | Description                                       | Field       | Type    |
|------|-----------------------------|---|-------------|---------|
| S003 | Travel                      | per km  | Services    | Product |
| S005 | Validation services         | per station                                       | Services    | Product |
| S008 | Services on site            | per hour  | Services    | Product |
| S016 | HW key exchange             | Exchange of damaged/obsolete HW key               | Services    | Product |
| S021 | Remote services             | Teamviewer/phone support, per hour                | Services    | Product |
| S024 | Software familiarization    | Web-based: individual for one end-user (2 hours)  | Services    | Product |
| S028 | UNI-Ruby script testing     | One-of driver testing                             | Services    | Product |
| S030 | Validator – custom data set | Custom data set                                   | Services    | Product |
| S031 | Validation training, online | individual (2 hours), add on for Clarity training | Services    | Product |
| SKxx | Communication cable         | (Specify cable type - see our documentation)      | Accessories | Cable   |
| SV9  | Terminal board              | Box, cable included                               | Accessories | Cable   |
| U31  | Colibrick                   | External USB, 1 channel                           | HW          | Basic   |
| U32  | Colibrick                   | External USB, 2 channels                          | HW          | Basic   |
| U34  | Colibrick                   | External USB, 4 channels                          | HW          | Basic   |