



## SSI NEXT GENERATION

Clarity Control Module

ENG

Code/Rev.: M204/80A  
Date: 8/24/2020

Phone: +420 251 013 400  
Fax: +420 251 013 401  
clarity@dataapex.com  
www.dataapex.com

DataApex Ltd.  
Petrzilkova 2583/13  
158 00 Prague 5  
The Czech Republic

Clarity<sup>®</sup>, DataApex<sup>®</sup> and ▲<sup>®</sup> are trademarks of DataApex Ltd. Microsoft<sup>®</sup> and Windows<sup>™</sup> are trademarks of Microsoft Corporation.

*DataApex reserves the right to make changes to manuals without prior notice. Updated manuals can be downloaded from [www.dataapex.com](http://www.dataapex.com).*

Author: zte

# Contents

<b>1 SSI Next Generation Control Module</b> .....	<b>1</b>
<b>2 Requirements</b> .....	<b>2</b>
<b>3 Installation Procedure</b> .....	<b>3</b>
3.1 SSI Next Generation pump communication .....	3
3.2 Clarity Configuration .....	4
<b>4 Using the control module</b> .....	<b>6</b>
4.1 Method Setup - LC Gradient .....	7
4.1.1 Gradient Options .....	10
4.2 Method Setup - LC .....	11
4.3 Method Setup - Advanced .....	12
4.4 Hardware Configuration .....	13
4.5 Device Monitor .....	14
4.5.1 LC Control Manual Flow .....	17
4.6 DataApex UNI Setup .....	18
<b>5 Report Setup</b> .....	<b>20</b>
<b>6 Troubleshooting</b> .....	<b>21</b>

To facilitate the orientation in the **SSI Next Generation** manual and **Clarity** chromatography station, different fonts are used throughout the manual. Meanings of these fonts are:

**Instrument** (blue text) marks the name of the window to which the text refers.

*Open File* (italics) describes the commands and names of fields in **Clarity**, parameters that can be entered into them or a window or dialog name (when you already are in the topic describing the window).

WORK1 (capitals) indicates the name of the file and/or directory.

*ACTIVE* (capital italics) marks the state of the station or its part.

The bold text is sometimes also used for important parts of the text and the name of the **Clarity** station. Moreover, some sections are written in format other than normal text. These sections are formatted as follows:

---

**Note:** Notifies the reader of relevant information.

---

**Caution:** Warns the user of possibly dangerous or very important information.

---

**■ Marks the problem statement or trouble question.**

**Description:** Presents more detailed information on the problem, describes its causes, etc.

**Solution:** Marks the response to the question, presents a procedure how to remove it.

# 1 SSI Next Generation Control Module

This manual describes the setting of the **SSI Next Generation** pump. The control module enables direct control of the instrument over serial line.



*Fig 1: SSI Next Generation pump*

Direct control means that the pump can be completely controlled from the **Clarity** environment. The Instrument method controlling the analysis conditions will be saved in the measured chromatograms.

The control is performed via the **UNI Ruby** control module and the **SSI Next Generation** script.

## 2 Requirements

- **Clarity** Installation USB with appropriate control license allowed - LC Control (p/n A24) for pumps.
- Free serial COM port in the PC.

---

*Note:* Modern computers usually have only one (if any) serial (COM) port installed. To use more devices requiring the RS232 port, the **MultiCOM** adapter (p/n MC01) is available.

- Serial DB9F-RJ11 cable (p/n SK05).

# 3 Installation Procedure

## 3.1 SSI Next Generation pump communication

The **SSI Next Generation** is controlled by serial (RS232) communication. It uses a serial DB9F-RJ11 cable (p/n SK05) described in the picture below.

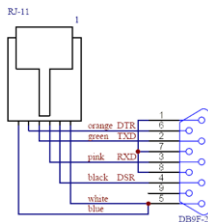


Fig 2: DB9F-RJ11

### 3.2 Clarity Configuration

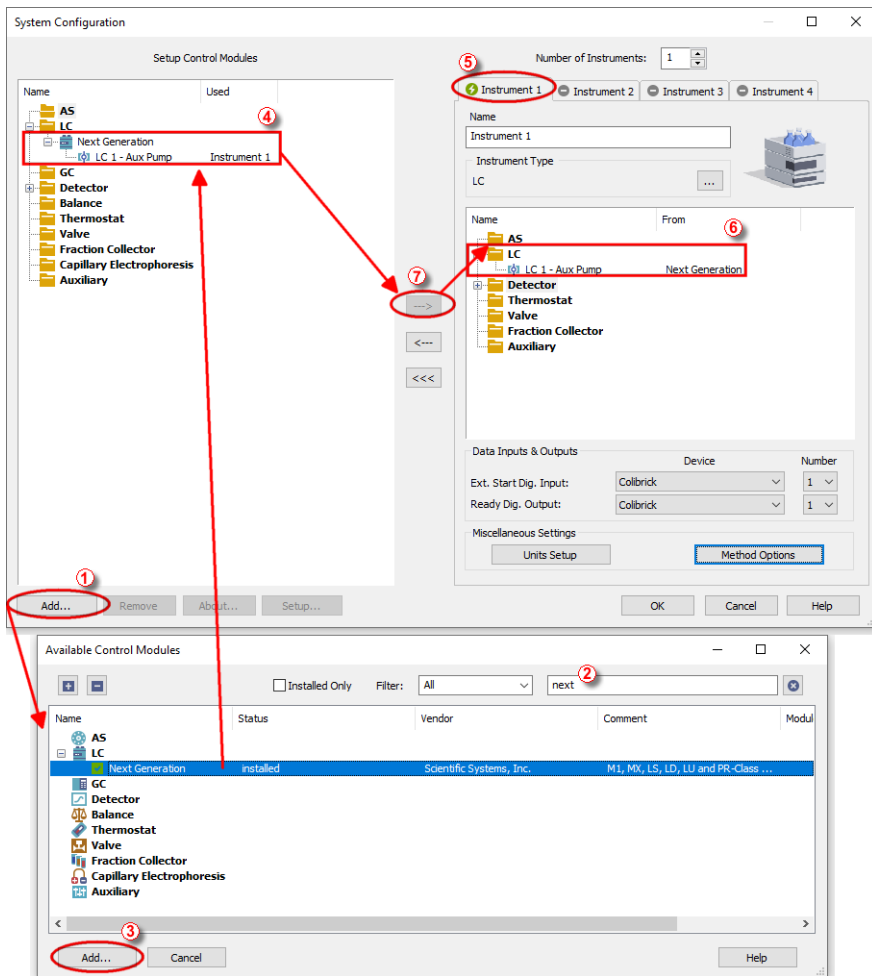



Fig 3: How to Add SSI Next Generation pumps module



- Start the **Clarity** station by clicking on the  icon on the desktop.
- Invoke the **System Configuration** dialog accessible from the **Clarity** window using the *System - Configuration...* command.
- Press the **Add** button (1 on Fig 3 on pg 4.) to invoke the **Available Control Modules** dialog.
- You can specify the search filter (2) to simplify the finding of the driver.



- Select the correct item and press the **Add** (③ on **Fig 3** on pg 4.) button. Each device with already created UNI profile should have its own item named accordingly in the **Available Control Modules** dialog.
- The **DataApex UNI Setup** dialog will appear.

DataApex UNI Setup

Ruby Script:  ...

Port:  Autodetect

	Property	Value
1	LC Name	LC 1
2	Do not Stop when Instrument is Closed	<input checked="" type="checkbox"/>
3	Auxiliary Pump controlled by Event Table	<input checked="" type="checkbox"/>
4	Autodetected parameters:	---
5	Head Type	S40
6	Maximum flow [ml/min]	12.000
7	Flow rate resolution (decimal places)	2
8	Pressure Sensor	<input checked="" type="checkbox"/>
9	Maximum High Pressure Limit	40.00
10	Pump Pressure Units	mpa
11	Solvent select	<input checked="" type="checkbox"/>

OK Cancel Help

Fig 4: DataApex UNI Setup

- You may fill in the custom *Device Name*.

**Note:** The **DataApex UNI Setup** dialog is described in detail in the chapter "**DataApex UNI Setup**" on pg 18.

- The **SSI Next Generation** item (④) will appear in the *Setup Control Modules* list of the **System Configuration** dialog.
- Drag the appropriate item from the *Setup Control Modules* list on the left side to the desired *Instrument* tab (⑤) on the right side (⑥), or click on the **---** button (⑦).

## 4 Using the control module

After adding and setting up the new device one or more new tabs will appear in the [Method Setup](#) dialog depending on the type of the instrument. A new section enabling the monitoring of the current pump state will be also created in the [Device Monitor](#) window.

## 4.1 Method Setup - LC Gradient

The **Method Setup - LC Gradient** tab is used for preparing and editing the instrument method used by the **SSI Next Generation** pump.

Method Setup Default1 (MODIFIED)

New Open... Save Save as... Report setup... Audit trail... Send method by e-mail... Help

Gradient Table					
	Time [min]	A [%]	B [%]	C [%]	Flow [mL/min]
1	Initial	80.0	18.0	2.0	1.000
2	2.00	80.0	18.0	2.0	1.000
3	11.00	60.0	38.0	2.0	1.000
4	20.00	20.0	78.0	2.0	1.000
5	27.50	20.0	78.0	2.0	1.000
6					

Standby Flow: 1 mL/min  
 Time to Standby: 0 min  
 Standby Time: 0 min

Idle State:  
 Pump Off  
 Initial  
 Standby  
 Initial - Standby

Options...

Event Table LC Gradient LC Measurement Acquisition Integration Calculation Advanced

OK Cancel Send Method

Fig 5: Method Setup - LC Gradient

### Gradient Table

A table for setting the composition of the mobile phase and the overall flow rate as a function of time. Operation is analogous to that of spreadsheets (Excel, Quatro Pro, etc.). To prepare the cell to receive values, click it by the left mouse button; the cell will highlight by dots. A cell that fails to highlight is not available for editing.

#### Time [min.]

Sets the time at which the ratio of flow rates and the overall flow rate correspond to the values entered in the corresponding row. (These values vary continuously from one time to the next in a manner ensuring that the conditions specified in the next row are satisfied).

#### XXX1 (..4) [%]

Represents the percentage of a component. The designation **XXX1-4** is in fact replaced by the name of the component (items *Solvent 1 - 4* in the **Gradient Options** dialog). Should you enter a component value such that the sum of all values exceeds 100 %, the percentage in the last column is automatically adjusted; if the percentage of the last compound is already zero, the value of the currently entered

component is adjusted instead. The flow rate of a compound is calculated by multiplying the overall flow rate (indicated in the *Flow* column) by the corresponding percentage divided by 100.

### **Flow [ml/min]**

Indicates the overall flow rate through the column. The entered value applies to the time specified in the corresponding row. The range for *Flow* values is 0 - 5 ml/min.

### **Graph**

The graph depicts the percentage of components as a function of time together with the overall flow rate. Data are taken over from the **Gradient Table**. Changes effected in this table are immediately reflected in the graph. Legend in the header of the graph indicates the assignment of colors to individual components. The assignment is fixed and individual components are displayed in the graph from bottom to top. The flow rate is displayed as a black line.

The graph has two vertical axes: the axis on the left refers to the overall flow rate, the one on the right to the mixing ratio.

### **Parameters**

#### **Standby Flow**

Sets the overall flow rate through the column in the *STANDBY* state reached after the last row of the table has been performed and the time period defined in the *Time to Standby* field has passed. The duration of this state is defined by the *Standby Time* item. The ratio of individual components in the respective *STANDBY* and *IDLE* states is given by the first row of the **Gradient Table** (the *Initial* row).

#### **Time to Standby [min]**

Indicates the time during which the flow rate and mobile phase composition changes continuously between the last values entered in the table and the values defined by *Standby Flow* field and the *Initial* row mobile phase composition.

This time is included in the analysis time (the Instrument is in the *CONTROL* state). In case when the *Time to Standby* is zero, there is step change from flow and components percentage specified on the last row of gradient table to that specified for *STANDBY* state.

#### **Standby Time [min]**

The time during which the flow rate is maintained at *Standby Flow*. This time is included in the analysis time (the Instrument is in the *CONTROL* state).

### **Idle State**

An item specifying the overall flow rate through the column outside the instrument method. The following options are possible:

#### **Pump Off**

The flow rates of all components are zero.

---

**Caution:** Be careful as this setting may damage the column in some cases.

### **Initial**

The flow rate is defined by the first row of the gradient table (the *Initial* row).

### **Standby**

The flow rate is the same as in the *STANDBY* mode and, accordingly, corresponds to the value entered in *Standby Flow* field.

### **Initial - Standby**

The flow is defined by the first row of the gradient table (the *Initial* row) after the method is sent, or by the value entered in the *Standby Flow* field after the method finishes.

The *IDLE* state comes into effect each time an Instrument is opened, at the end or after abortion of an analysis by the *Abort* command, and is also maintained after the **Clarity** program is shut down.

The mixing ratio of individual components in both the *IDLE* and *STANDBY* states is given by the first row of the **Gradient Table** (the *Initial* row).

---

**Note:** There is a step change in the flow and components percentage from the values specified for the *STANDBY* state to those specified for the *IDLE* state if the *Idle State* field is not set to *Standby*.

## 4.1.1 Gradient Options

Invoke the *Options...* button in the [Method Setup - LC Gradient](#) dialog to open the [Gradient Options](#) dialog. This dialog allows to set the custom name for particular solvents, to switch whether they are used or not in the gradient and to set the warning levels for pressure to prevent the damage to hardware.

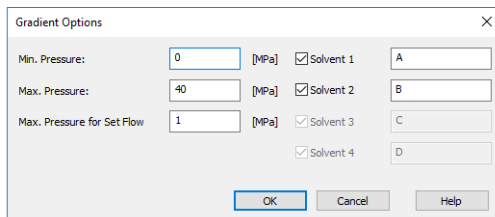


Fig 6: Gradient Options

### Min. Pressure

Sets the minimum pressure for the given pump. When pressure drops to the set value, the pump will shut down. This prevents the solvent leakage. The range for *Min. Pressure* values is 0 - 123.1 MPa.

### Max. Pressure

Sets the maximum pressure for the given pump. When pressure reaches the set value, the pump will shut down. This serves to prevent the damage to the pump when the column is blocked. The range for *Max. Pressure* values is 1 - 124.1 MPa, where the *Max. Pressure* must also be at least 1 MPa higher than the *Min. Pressure*.

*Note:* Pressure limits are checked in the pump hardware. Pressure checking doesn't start immediately after the pump is started, but with a few minutes delay. During this delay the pressure in chromatographic system can stabilize.

### Max. Pressure for Set Flow

Sets the maximum pressure to be used in the [Set Flow](#) dialog in the [Device Monitor](#). Initial value is 1 MPa.

### Solvent 1 (..4)

It is possible to enable/disable particular solvent, as well as to set custom name to it.

## 4.2 Method Setup - LC

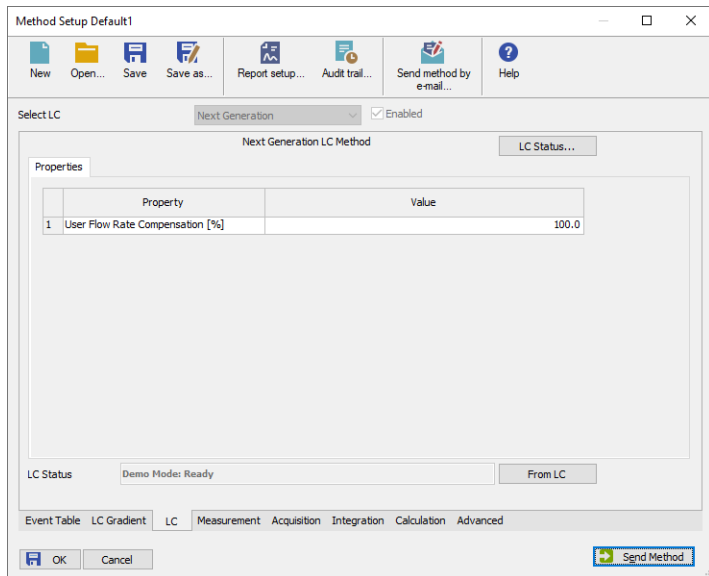


Fig 7: Method Setup - LC - Properties

The same tab defines different properties of the **SSI Next Generation** when it is not set as an auxiliary pump. The two properties shown will appear or not depending on the options set on the [Device Setup](#) window. Please check your specific manufacturer manual for detail information on these settings.

### User Flow Rate Compensation [%]

Here you can set the Operating Pressure for the pump except from Series 5 pumps.

### 4.3 Method Setup - Advanced

The **Method Setup - Advanced** tab serves for setting the usage of auxiliary signals of the **SSI Next Generation**.

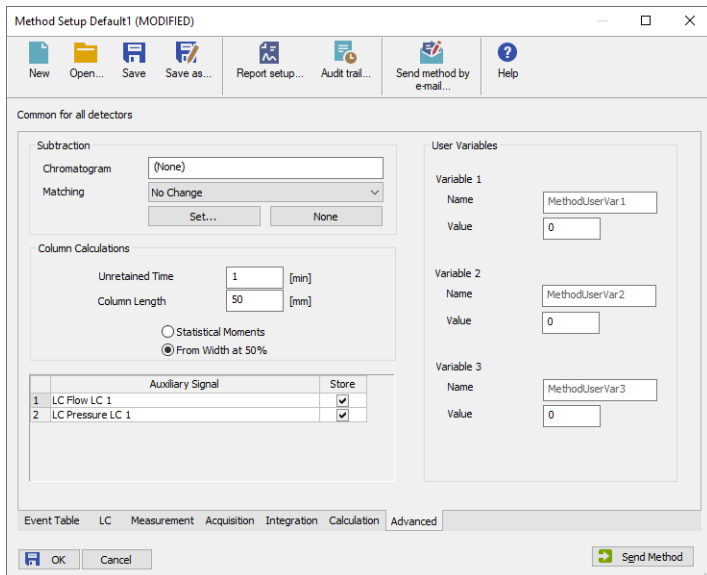


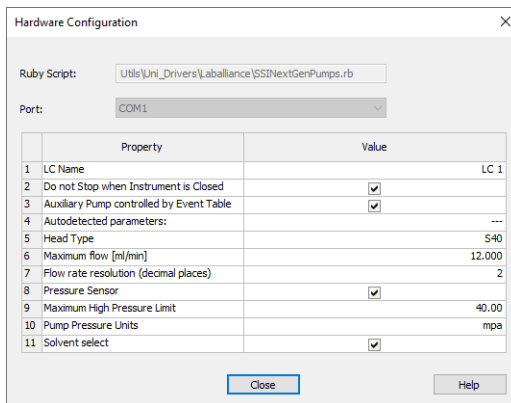
Fig 8: Method Setup - Advanced

The list of available auxiliary signals is shown in the table in the lower part of the dialog. By checking the checkbox in the *Store* column for the particular row, the given auxiliary signal will be stored into the measured chromatogram.



## 4.4 Hardware Configuration


The **Hardware Configuration** dialog (invoked by using the *LC Status* button from the Method Setup - AS Method Setup - FC Method Setup - ValvesMethod Setup - Aux - Properties dialog) displays the configuration of the **SSI Next Generation**, namely the communication type and its parameters.



	Property	Value
1	LC Name	LC 1
2	Do not Stop when Instrument is Closed	<input checked="" type="checkbox"/>
3	Auxiliary Pump controlled by Event Table	<input checked="" type="checkbox"/>
4	Autodetected parameters:	---
5	Head Type	S40
6	Maximum flow [ml/min]	12.000
7	Flow rate resolution (decimal places)	2
8	Pressure Sensor	<input checked="" type="checkbox"/>
9	Maximum High Pressure Limit	40.00
10	Pump Pressure Units	mpa
11	Solvent select	<input checked="" type="checkbox"/>

Fig 9: Hardware Configuration

## 4.5 Device Monitor

The window with the pump status can be invoked by the *Monitor - Device Monitor* command from the **Instrument** window or using the  *Device Monitor* icon.

### Device Monitor - LC Monitor

For gradient pumps, the monitor consists of the section common to all pumps present in the gradient.

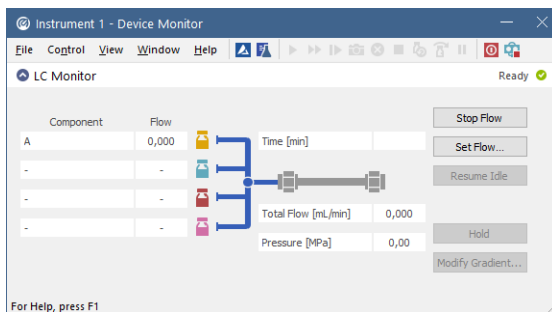


Fig 10: Pump - Device Monitor

### Stop Flow

The pumps can be stopped from this window using the *Stop Flow* button. This action will stop the pump only, the analysis run will continue and must be stopped or aborted separately by the *Stop/Abort* button in the toolbar.

### Set Flow...

Sets the desired total flow and solvent ratios in the opened **Set Flow** dialog. *Max. Pressure* allows to set a different pressure than set in the "Gradient Options" on page 10 of a given method.

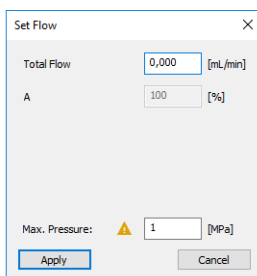


Fig 11: Set Flow

**Resume Idle**

Returns the pumps to *IDLE* state as defined in the appropriate field on the [LC Gradient](#) tab of the [Method Setup](#) dialog.

**Hold/Resume**

Clicking on the *Hold* button will keep the current gradient conditions until *Resume* is clicked.

**Modify Gradient...**

Opens the [LC Control Manual Flow](#) dialog allowing to set custom flow and mobile phase composition, disregarding the **Gradient Table** set in the method. The command is only available during the analysis run.

## Device Monitor - Auxiliary Pump

Each Auxiliary pump has its own device monitor displaying the actual flow and pressure on the device. This separate monitor mimics the operations of *Stop Flow*, *Purge* and *Resume Idle* from the gradient [Device Monitor](#), but can also be used during the analysis run.

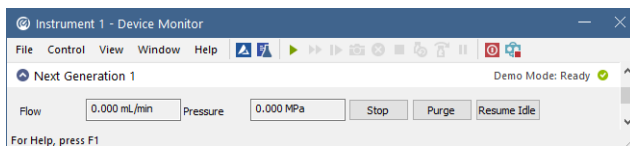


Fig 12: Device Monitor - Auxiliary pump

**Note:** Please note that the separate [Purge](#) dialog is present for each auxiliary pump. Auxiliary pumps must thus be purged manually one at a time.

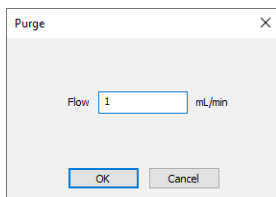


Fig 13: Purge - Auxiliary pump

### 4.5.1 LC Control Manual Flow

The **LC Control Manual Flow** dialog accessible through using the *Modify Gradient ...* button from **Device Monitor** window allows the user to set a custom mobile phase composition and flow while the analysis is running. It resembles the **Method Setup - LC Gradient** tab in functionality.

The dialog box is titled "LC Control Manual Flow" and contains the following elements:

Gradient Table						
Time [min]	A [%]	B [%]	C [%]	D [%]	Flow [mL/min]	
1	Initial	10,0	10,0	20,0	60,0	1,000
2	1,00	10,0	10,0	20,0	60,0	1,000
3	3,00	50,0	20,0	30,0	0,0	1,000
4	4,00	50,0	20,0	30,0	0,0	1,000
5						

Below the table is a graph showing Flow [mL/min] on the left y-axis (0,0 to 1,5) and Composition [%] on the right y-axis (0 to 80) against Time [min] on the x-axis (0 to 4). The graph displays four stacked areas representing components A (yellow), B (cyan), C (magenta), and D (red).

Control options on the right include:

- Standby Flow: 1 mL/min
- Time to Standby: 0 min
- Standby Time: 0 min
- Idle State:
  - Pump Off
  - Initial
  - Standby
  - Initial - Standby

Buttons for "OK" and "Cancel" are located at the bottom right.

Fig 14: LC Control Manual Flow dialog

The **LC Control Manual Flow** dialog is only available during the analysis run. When it is invoked and the **OK** button is pressed, the original **Gradient Table** from the acquisition method is discarded and replaced by the **Gradient Table** from the **LC Control Manual Flow** dialog. Any such operation is recorded in the audit trail of the measured chromatogram.

**Caution:** After the analysis run which used manual flow changes ends, the original method is automatically sent to all controlled devices to make sure **Clarity** station returns to the original method.

## 4.6 DataApex UNI Setup

The appearance of the **DataApex UNI Setup** dialog depends on the presence of the selected Ruby Script - if the script is not present, only the *Ruby Script* field is visible.

	Property	Value
1	LC Name	LC 1
2	Do not Stop when Instrument is Closed	<input checked="" type="checkbox"/>
3	Auxiliary Pump controlled by Event Table	<input checked="" type="checkbox"/>
4	Autodetected parameters:	---
5	Head Type	S40
6	Maximum flow [ml/min]	12.000
7	Flow rate resolution (decimal places)	2
8	Pressure Sensor	<input checked="" type="checkbox"/>
9	Maximum High Pressure Limit	40.00
10	Pump Pressure Units	mpa
11	Solvent select	<input checked="" type="checkbox"/>

Fig 15: DataApex UNI Setup

### Ruby Script

Displays the selected Ruby Script. The correct SSINEXTGENPUMPS.RB script for the **SSI Next Generation** instrument can be found in the UTILS/UNI\_DRIVERS/LABALLIANCE subdirectory (accessible through the  button) of the **Clarity** installation folder (C:\CLARITY\BIN by default).

### Port

Defines the communication port used, possible values dependent on the type of communication of the device and/or available ports in the PC.

### AutoDetect

It is used for verifying the device communication over the serial port selected above.

### Instrument Name

Allows you to set the custom name of the instrument. This name (entered into the *Value* column) will be used throughout the **Clarity** station.

### Head Type

This is an autodetected parameter and it determines the maximum pressure limits and flow in combination with other parameters.

### Do not Stop when Closing Instrument

The pumps will not be shut down when closing the **Clarity** Instrument if this option is ticked.

**Auxiliary Pump controlled by Event Table**

The selected pump will be set as an auxiliary pump and it will be controlled by Event Table when ticking this box.

**Flow rate resolution (decimal places)**

Sets the number of decimal places for flow rate resolution.

**Pressure Sensor**

By selecting this checkbox, it enables pressure sensor.

**Maximum High Pressure Limit [MPa].**

It sets a limit to the High Pressure value set on the Method.

This parameter is set automatically based on the autodetected head type and pump model. It sets a limit to the *High Pressure* value set on the Method. It needs to be amended for some customized pumps according to their specifications, otherwise a communication error will be invoked.

**Maximum Flow [m].**

It sets a limit to the Maximum Flow value set on the Method.

**Pump Pressure Units**

Sets the pressure units of the selected pump.

# 5 Report Setup

The pump section on the method report can be enabled by checking the *Instrument Control* checkbox on the **Method** tab of the **Report Setup** dialog.

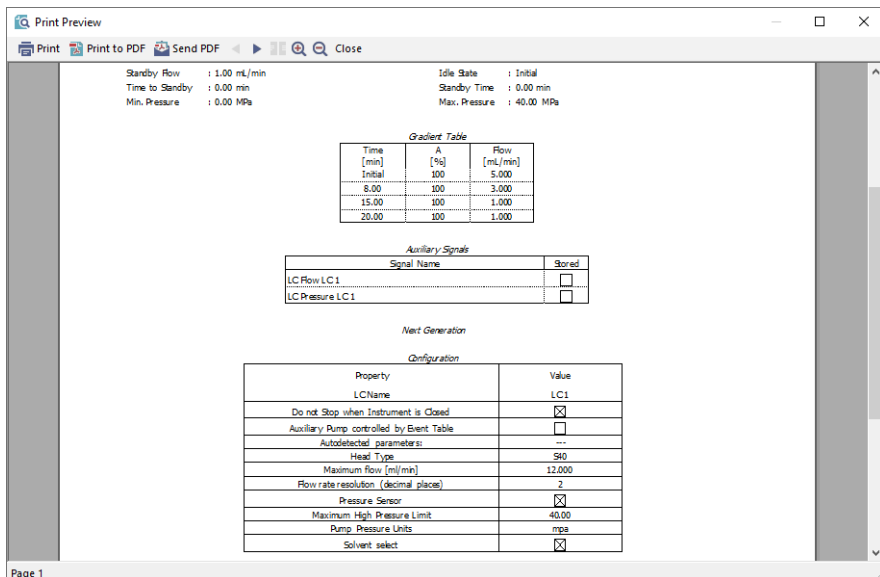


Fig 16: Report Setup

All of the parameters set in the **Method Setup - LC Gradient** dialog are reported, as well as the custom *Pump Name* and other parameters set in the **DataApex UNI Setup** dialog. If the pump is configured as an Auxiliary Pump, the parameters set in the **Method Setup - LC** dialog are reported instead.



## 6 Troubleshooting

When the solution to a problem cannot be found easily, a recording of the communication between **Clarity** and the pump will significantly help **DataApex** support.

The data recording can be enabled by adding or amending the COMMDRV.INI file in the **Clarity** installation directory (C:\CLARITY\CFG by default). The file can be edited in any text editor (e.g. Notepad). The following section should be edited or added:

```
[COM1]
echo=on
textmode=on
filename=CommDrvCOM1_%D.txt
reset=off
```

---

*Note:* Instead of COM1, type the communication port used to communicate with the . This port number is displayed when the *LC Status* button in the [Method Setup - LC](#) dialog is invoked.

---

*Note:* *%D* (or *%d*) in the filename parameter means that the log will be created separately for each day. The *reset=off* parameter disables deleting the content of the log each time the station is started during the same day.

The created \*.TXT files will be of great help in the diagnosis of not documented errors and communication issues.