

Clarity AS Controls - Agilent ALS autosamplers

The AS Control Module (p/n A26) for Clarity Chromatography Station allows to control 6850, 7673 A, 7673 B, 7673 II, 7683 and 7693 Agilent Automatic Liquid Samplers (ALS). The chromatography station with the AS control module provides a user's complete access to all parameters of an injection during sequence directly from a computer. Various methods can be selected for each sample in a given sequence. The method includes AS control parameters, parameters of data acquisition, integration and calculation.

Control of Agilent 7673 A, 7673 B and 7673 II autosampler

AS Control Module is used in combination with GC Control Module for control of these autosamplers on 5890, 68xx and 7890 GCs. Autosampler control is realized via a standard serial port of the computer (COM1 - COM4) with standard RS 232 cable. 7673 A ALS requires an interface card, for more details see the manual.

Control of Agilent 7683 and 7693 autosampler

The control of those two autosamplers is realized through 6890 or 7890 GCs. To be able to control these autosamplers is necessary to purchase GC Control Module and AS Control Module licenses. ALS 7683 and 7693 are connected to 6890 or 7890 GCs and do not require own serial port.

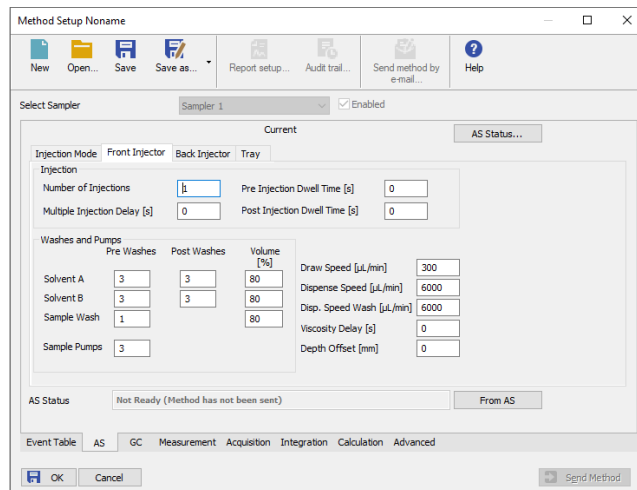
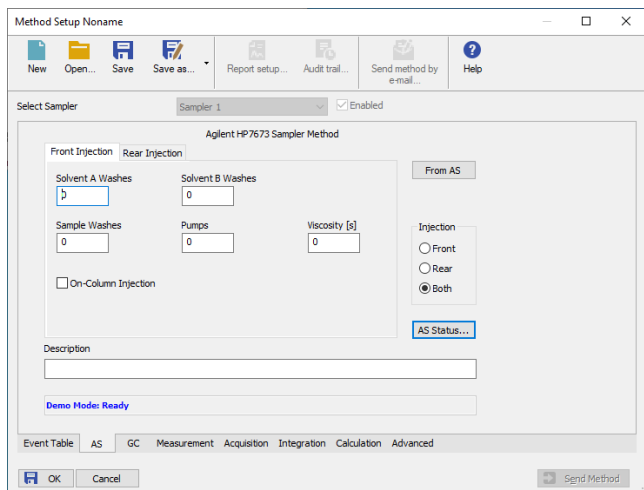
Control of Agilent 6850 autosampler

This autosampler can be only combined with 6850 GC. To be able to control combination of GC 6850 and ALS 6850 is necessary to purchase both GC Control Module and AS Control Modules licenses.



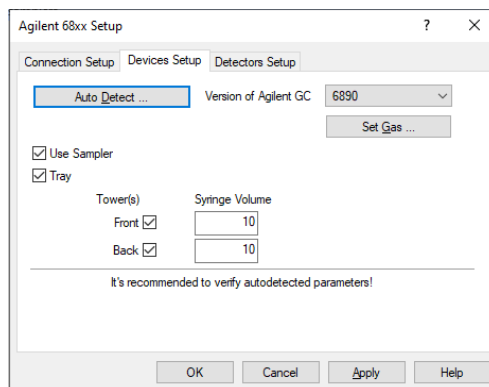
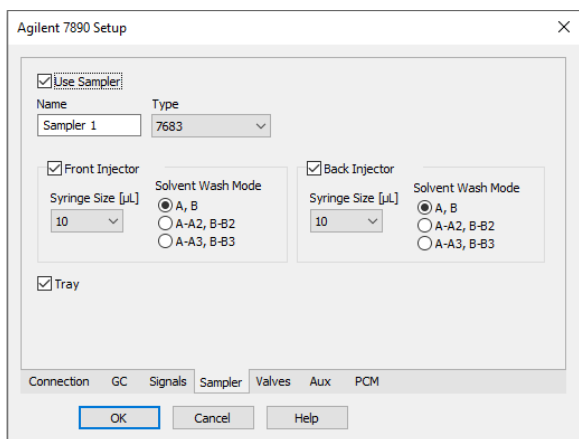
ALS parameters directly controlled from Clarity software

Sample Wash (preinjection), Solvent A (post-injection), Solvent B (post-injection), Pumps (preinjection), Injection Volume, Viscosity, On-Column mode, First vial, Last vial, Injections per bottle



Using 7683 and 7693 as Dual Tower (two injectors)

Clarity allows control 7683 and 7693 Dual Tower Injectors. When setting up Dual Injectors 7683 or 7693 in 7890 GC it is necessary to follow 7890 GC manual, chapter 4.6. The 6890 GC supports Dual Injector only for 7683 autosampler. Setting up has to be performed according to 6890 manual, chapter 4.6.2.



Specification:

- Controlled devices:** The AS control module is compatible with the Agilent autosamplers 6850, 7673 A, 7673 B, 7673 II, 7683, 7693
- Purchasing:** AS Control - Part No. A26
- Compatible Products:** Clarity Software - Part No. C50 (required)
GC Control - Part No. A23 (required for 6850, 7683 and 7693)

For more information contact clarity@dataapex.com