



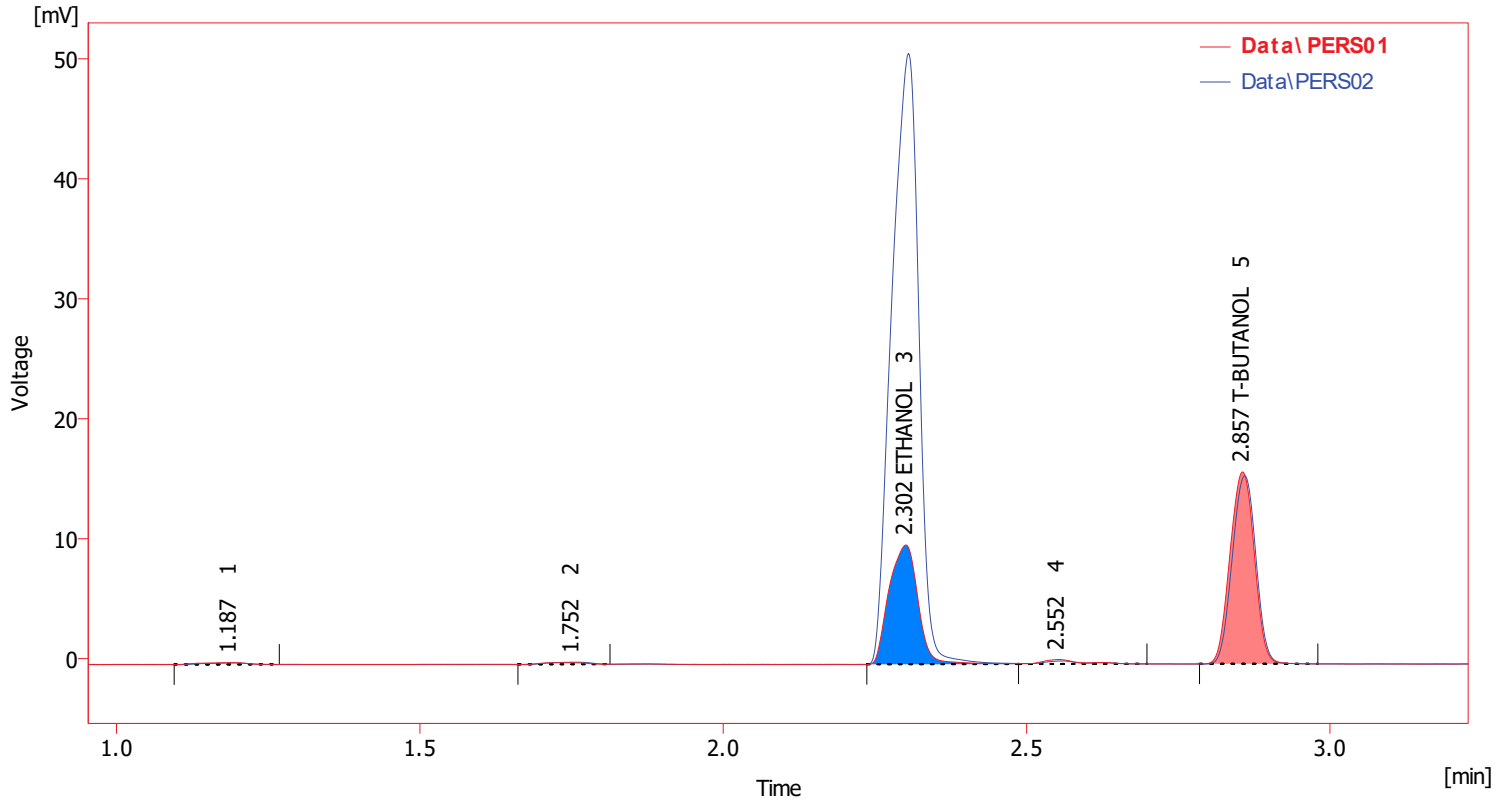
my Lab
New street
Prague 10

Chromatogram Info:

File Name : C:\Clarity\DataFiles\DEMO1\Data\PERS01.prm
 Origin : Save File C:\Clarity_Alpha\DEMO1\Data\Pers01.PRM As
 C:\Clarity_Alpha\DEMO1\Data\Pers01x.PRM

File Created : 3/7/2023 2:48:32 AM
 Acquired Date : 1/16/1995 2:16:00 PM

By : DataApex Ltd.



Result Table (ISTD - Data\PERS01)

	Reten. Time [min]	Response	Amount [g/kg]	Amount% [%]	Peak Type	Compound Name
1	1.187	0.768	0.000	0.0		
2	1.752	0.618	0.000	0.0		
3	2.302	33.048	0.647	16.2	Ordnr (by ISTD1)	ETHANOL
4	2.552	1.590	0.000	0.0		
5	2.857	44.529	ISTD	ISTD	ISTD1	T-BUTANOL
	Total		4.000	16.2		

Result Table (ISTD - Data\PERS02)

	Reten. Time [min]	Response	Amount [g/kg]	Amount% [%]	Peak Type	Compound Name
1	1.193	0.703	0.000	0.0		
2	1.752	0.932	0.000	0.0		
3	2.305	157.640	3.233	100.0	Ordnr (by ISTD1)	ETHANOL
4	2.557	1.308	0.000	0.0		
5	2.860	42.530	ISTD	ISTD	ISTD1	T-BUTANOL
	Total		3.233	100.0		

Acquisition Method : N/A
 Description :
 Created : N/A By :
 Modified : N/A By :

Processing Method : N/A + manual changes
 Description :
 Created : N/A By :
 Modified : N/A By :

Column : db 624-30m-3.0u-0,32 id Detection : FID
 Mobile Phase : hydrogen Temperature : Ramped to 225
 Flow Rate : 50 cm/min Pressure : 5.57 psi
 Note : short linear velocity 50 cm/sec
 column initial 45 deg

Autostop : 10.00 min External Start : Start - Restart, Down
 Subtraction Chromatogram : (None) Matching : No Change

Calibration : Calib\Ethanol By : None
 Description : DEMO Example - Ethanol in blood
 Created : 3/30/1995 2:20:18 PM Modified : 3/7/2023 2:48:32 AM

Number of Signals : 1 Deviation : Disable
 Calibration : Automatic Correlation : Disable
 Apply on : On All Signals Recalibration Search Criteria : Disable
 Compound Units : g/kg Enable Manual Response Value Change : Enable
 Mode : Calibrate Update Retention Time : Enable
 Recalibration : Average Default Injected Volume : Disable
 No. of Points : 10 Retention Indexes use Log. Interpolation with Unretained Peak : Enable
 Response Factor as Response / Amount : Disable

Calibration Summary Table (ISTD - Calib\Ethanol - Signal 1)

Used	Compound Name	Reten. Time	Left Window	Right Window	Peak Type	Name d Groups	Is ISTD	Use ISTD	Peak Color	LOD	LOQ	Respo nse Base	Manual Resp. Factor
<input checked="" type="checkbox"/>	ETHANOL	2.308	0.200 min	0.200 min	Ordnr		None	T-BUTANO L		0.000	0.000	A	0.0000
<input checked="" type="checkbox"/>	T-BUTANOL	2.862	0.200 min	0.200 min	Ordnr		ISTD1			0.000	0.000	A	0.0000