

## Clarity – Ordering Guide

This document provides basic guidelines on the compatibility of available Clarity Software products, upgrades, and an alphabetical list of part numbers (p/n).

This document is further referenced to the following documents:

- D004 – List of controlled instruments
- D007 – Clarity vs Clarity Lite Comparison
- D048 – Clarity configuration examples

PC requirements: Windows OS compatibility and PC requirements are outlined at [www.dataapex.com](http://www.dataapex.com) in the corresponding product sections.

Clarity SW (including Lite and Offline versions) is **multilingual**. Available are English, German, French, Russian, Spanish and Chinese. The translation is limited to the main SW, extensions, and modules (SW Help and documentation are in EN).

### Clarity Chromatography SW, p/n C50

Multi-instrument version, extensible (via controls and extensions), suitable for a regulated environment

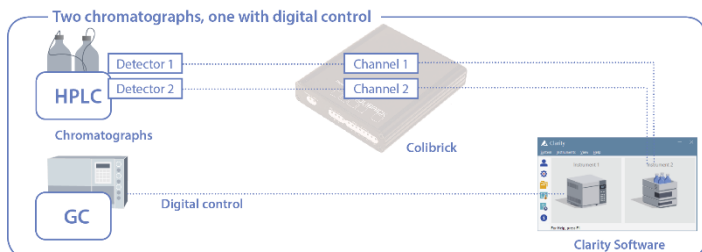
Compatible products	Description
<p><b>Time-base extensions:</b></p> <ul style="list-style-type: none"> <li>• Add-on Instrument SW, <a href="#">p/n C55</a> (max three per one C50)</li> </ul>	<p>A maximum of four instruments may be configured per one Clarity Installation <i>Please refer to notes*</i></p>
<p><b>Optional Extensions:</b></p> <p>(to be purchased per C50)</p> <ul style="list-style-type: none"> <li>• SST System Suitability Test, <a href="#">p/n A22</a></li> <li>• GPC Data Processing, <a href="#">p/n A28</a></li> <li>• PDA Data Processing, <a href="#">p/n A29</a></li> <li>• EA SW Module, <a href="#">p/n A30</a></li> <li>• CE SW Module <a href="#">p/n A31</a></li> <li>• NGA Calculations, <a href="#">p/n A32</a></li> <li>• DHA Calculations, <a href="#">p/n A33</a></li> <li>• MS Data Processing, <a href="#">p/n A38</a></li> </ul>	<p>Extensions and Controls are global, all instruments licensed within one SW installation can use them.</p> <p>Compatibility of control modules should always be confirmed in datasheet D004, and a corresponding control module manual has to be checked for specific requirements (cable, interfaces, etc.)</p>
<p><b>Optional Control Modules:</b></p> <p>(to be purchased per C50)</p> <ul style="list-style-type: none"> <li>• AS Control, <a href="#">p/n A26</a></li> <li>• LC Control, <a href="#">p/n A24</a></li> <li>• GC Control, <a href="#">p/n A23</a></li> </ul>	<p>Data Processing SW modules do not include control, this has to be ordered separately, e.g., for MS, PDA</p>

## Compatible A/D Converters:

- Colibrick External USB, p/n U31–U34 (based on the number of channels)

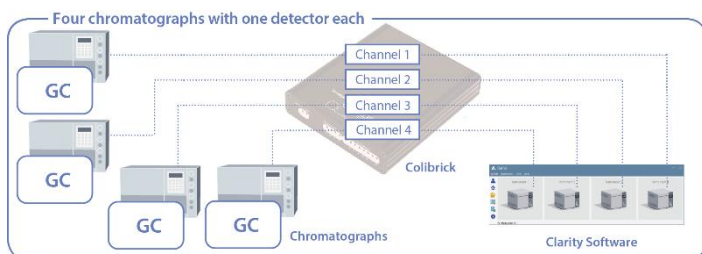
A/D converters are supplied with cables (open ends, 3 m). Cable modification (p/n KBSP) or extensions (p/n KP) are available

## Clarity – configuration examples:



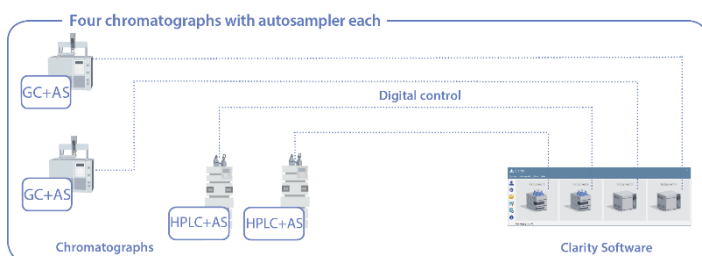
### Configuration

- p/n C50
- p/n C55
- p/n U32
- p/n A23



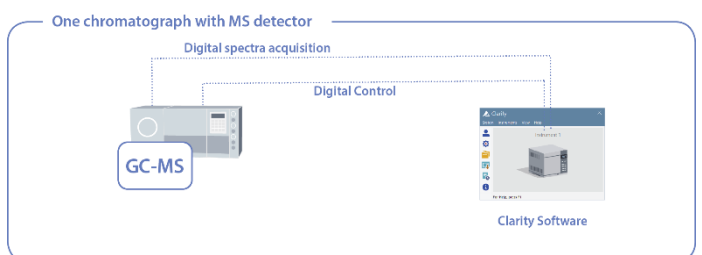
### Configuration

- p/n C50
- p/n C55 3x
- p/n U34



### Configuration

- p/n C50
- p/n C55 3x
- p/n A23 1x
- p/n A24 1x
- p/n A26 1x



### Configuration

- p/n C50
- p/n A23
- p/n A38

A23 covers both GC and MS control modules (refer to D004)

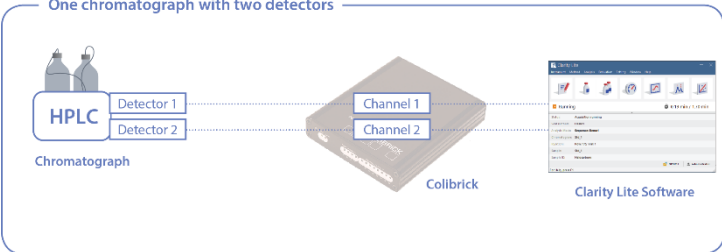
## \* Notes:

Despite Clarity can connect up to four Instruments simultaneously, such configuration may not be practical in cases when all four instruments are simultaneously running short analyses (i.e., less than 20 minutes) due to the following issues:

- Method sending for some GC and HPLC systems is a lengthy operation, and during this time, Clarity may not be operable.
- During chromatogram processing, after the end of acquisition, Clarity may again not respond for some time.
- If there is more than one operator, there may be a struggle for keyboard control.
- The demands for processing time/memory may exceed the available resources on low-performance computers.

## Clarity Lite Chromatography SW, p/n C40

Entry solution, simplified version for 1 Instrument (time base), analog data acquisition only (max 4 channels), data processing, basic synchronization with AS

Compatible products	Description
<p><b>Optional Extensions &amp; Control modules:</b></p> <ul style="list-style-type: none"> <li>None</li> </ul> <p><b>Compatible A/D Converters:</b></p> <p>Only <u>one</u> plug-and-play A/D converter</p> <ul style="list-style-type: none"> <li>Colibrick External USB, p/n U31-U34 (based on the number of channels)</li> </ul> <p><b>Example:</b></p>  <p>The diagram illustrates the hardware and software configuration for Clarity Lite. On the left, an HPLC Chromatograph is connected to two detectors, labeled 'Detector 1' and 'Detector 2'. These detectors are connected to a Colibrick A/D converter module, which has two channels, 'Channel 1' and 'Channel 2'. The Colibrick module is connected to the Clarity Lite Software interface, which is shown as a screenshot of the software's main window.</p>	<p>Clarity Lite p/n C40 can be upgraded to Clarity Single Instrument (C50) using p/n C540</p> <p>A/D converters are supplied with cables (open ends, 3 m). Cable modification (p/n KBSP) or extensions (p/n KP) are available</p> <p>Configuration</p> <ul style="list-style-type: none"> <li>p/n C40</li> <li>p/n U32</li> </ul>

## Clarity Offline Chromatography SW, p/n C59

Version for Offline data processing, no data acquisition

**GC, LC, and AS Control Modules** are automatically enabled in each **Clarity Offline**

Compatible products	Description
<p><b>Optional Extensions:</b></p> <ul style="list-style-type: none"> <li>SST System Suitability Test, p/n A22</li> <li>GPC Data Processing, p/n A28</li> <li>PDA Data Processing, p/n A29</li> <li>EA SW Module, p/n A30</li> <li>CE SW Module p/n A31</li> <li>NGA Calculations, p/n A32</li> <li>DHA Calculations, p/n A33</li> <li>MS Data Processing, p/n A38</li> </ul>	<p>Version for Offline data processing, no data acquisition</p>

## List of Part Numbers (p/n)

For our distributors, D173 List of Part Numbers is also available in \*.xlsx format on our website in the [Downloads section](#).

### Alphabetical export from the pricelist

p/n	Name	Description	Field	Type
A22	SST	SW module for System Suitability Test	SW	Extension
A23	GC Control	SW module for GC control	SW	Control
A24	LC Control	SW module for HPLC/CE control (pump, det, etc.)	SW	Control
A26	AS Control	SW module for AS control	SW	Control
A28	GPC	SW module for GPC/SEC data processing	SW	Extension
A29	PDA	SW module for PDA data processing	SW	Extension
A30	EA	SW module for Elemental Analysis	SW	Extension
A31	CE	SW module for Capillary Electrophoresis	SW	Extension
A32	NGA	SW module for NGA calculations	SW	Extension
A33	DHA	SW module for DHA calculations	SW	Extension
A38	MS QUAD	SW module for MS data processing	SW	Extension
B30	Zebrick set	External USB pump control converter, cable	HW	Basic
C40	Clarity Lite	Simplified, Single Instrument SW	SW	Solution
C400	Clarity Lite	to the latest major version upgrade	SW	Upgrade
C400-CHS	Clarity Lite CHS	to the latest major version upgrade	SW	Upgrade
C40-CHS	Clarity Lite CHS	Simplified, Single Instrument SW, Chinese ver.	SW	Solution
C50	Clarity	Extensible, Single Instrument SW, CFR21/GLP	SW	Solution
C500	Clarity	to the latest major version upgrade	SW	Upgrade
C500-CHS	Clarity CHS	to the latest major version upgrade	SW	Upgrade
p/n	Name	Description	Field	Type
C50-CHS	Clarity CHS	Extensible,1 Instr., CFR21/GLP ready, Chinese ver.	SW	Solution
C540	Clarity Lite	to Clarity, Single Instrument Software upgrade	SW	Upgrade
C540-CHS	Clarity Lite CHS	to Clarity CHS, Single Instrument upgrade	SW	Upgrade
C55	Add-on Instrument	Single Instrument Add-on	SW	Extension
C560	Clarity-CHS	to Clarity SW multilingual localization upgrade	SW	Upgrade

p/n	Name	Description	Field	Type
C565	Clarity Lite-CHS	to Clarity Lite multilingual localization upgrade	SW	Upgrade
C59	Clarity Offline	Offline version for data processing	SW	Solution
C591	Clarity Offline	to the latest major version upgrade	SW	Upgrade
C591-CHS	Clarity CHS Offline	to the latest major version upgrade	SW	Upgrade
C59-CHS	Clarity CHS Offline	Offline version for data processing, Chinese ver.	SW	Solution
C600	Clarity (Lite) version < 2.4	to Clarity (Lite): version upgrade incl. HW key	SW	Upgrade
CVK	Validation Kit	Peak generator and SW methods for OQ	HW	Solution
CVR	Validator recalibration		Services	Product
DID01	Digital input device	for Ecom Sapphire, Topaz or Sykam 3210/40 detector	Accessories	Interface
IGLN1	RS232/GSIOC converter set	for Gilson Control, cables	Accessories	Interface
IGLN2	Adaptor GSIOC	Cable for two Gilson devices	Accessories	Interface
KB71	Cable for A/D converter	1 channel, 3 meters	Accessories	Cable
KB72	Cable for A/D converter	2 channels, 3 meters	Accessories	Cable
KB74	Cable for A/D converter	4 channels, 3 meters	Accessories	Cable
KBCB	Cable for Zebrick/CB20	2x Voltage, 2x Frequency, 3 meters	Accessories	Cable
KBCB-2V	Cable for Zebrick/CB20	2x Voltage, 3 meters	Accessories	Cable
KBCB-4V	Cable for Zebrick/CB20	4x Voltage, 3 meters	Accessories	Cable
KBSP	Cable modification	Customized connector etc.	Accessories	Cable
KP	Cable extension	(Specify length in m), price per m and channel	Accessories	Cable
MC01	MultiCOM Set	1x USB to 6x RS232 Converter, USB cable	Accessories	Interface
OPT01	Opt-USB Set	Optical to USB adapt. for Shimadzu Control, cables	Accessories	Interface
S001	SDK /UNI Ruby Support - annual fee	includes drivers'/scripts' testing & incorporation	Services	Development
S003	Travel	per km	Services	Product
S005	Validation services	per station	Services	Product
S008	Services on site	per hour	Services	Product
S016	HW key exchange	Exchange of damaged/obsolete HW key	Services	Product
S021	Remote services	TeamViewer/phone support, per hour	Services	Product

p/n	Name	Description	Field	Type
S024	Software familiarization	Web based: individual for one end-user (3 hours)	Services	Product
S028	UNI-Ruby script testing	One-of driver testing	Services	Product
S030	Validator - custom data set	Custom data set	Services	Product
S031	Validation training, online	individual (2 hours), add-on for Clarity training	Services	Product
S034	Installation media	on a USB key	Services	Basic
S035	Services on-site/Consulting	1 day	Services	Product
SKxx	Communication cable	(Specify cable type – see our documentation)	Accessories	Cable
SV9	Terminal board	Box, cable	Accessories	Cable
U31	Colibrick set	External USB, 1 channel, cable	HW	Basic
U32	Colibrick set	External USB, 2 channels, cable	HW	Basic
U34	Colibrick set	External USB, 4 channels, cable	HW	Basic