

## GPC EXTENSION

Clarity Extension

ENG

Code/Rev.: M005/100A

Date: 2025-05-12

Phone: +420 251 013 400

[clarity@dataapex.com](mailto:clarity@dataapex.com)

[www.dataapex.com](http://www.dataapex.com)

DataApex Ltd.  
Petrzilkova 2583/13  
158 00 Prague 5  
Czech Republic

Clarity<sup>®</sup>, DataApex<sup>®</sup> and <sup>®</sup> are trademarks of DataApex Ltd. Microsoft<sup>®</sup> and Windows<sup>™</sup> are trademarks of Microsoft Corporation.

*DataApex reserves the right to make changes to manuals without prior notice. Updated manuals can be downloaded from [www.dataapex.com](http://www.dataapex.com).*

Author: DM

# Contents

|  |          |
|--|----------|
| <b>1 GPC - Gel Permeation Chromatography</b> | <b>1</b> |
| <b>2 Specification</b>                       | <b>2</b> |
| <b>3 Installation</b>                        | <b>3</b> |
| <b>4 Key Features</b>                        | <b>4</b> |
| 4.1 Basic principles and terms               | 4        |
| <b>5 GPC Extension description</b>           | <b>6</b> |
| 5.1 Instrument window                        | 6        |
| 5.2 Single Analysis dialog                   | 7        |
| 5.2.1 K & Alpha                              | 8        |
| 5.3 Sequence window                          | 9        |
| 5.4 Method Setup dialog                      | 10       |
| 5.4.1 GPC Integration                        | 10       |
| 5.4.2 GPC Calculation                        | 11       |
| 5.4.3 GPC Ranges                             | 11       |
| 5.5 Chromatogram window                      | 13       |
| 5.5.1 Chromatogram                           | 13       |
| 5.5.1.1 Graph Properties - GPC Options       | 14       |
| 5.5.2 MW Distribution                        | 15       |
| 5.5.3 Cumulative MW Distribution             | 16       |
| 5.5.4 GPC Results                            | 17       |
| 5.5.5 GPC Summary                            | 17       |
| 5.5.6 GPC Integration                        | 18       |
| 5.5.7 Measurement Conditions                 | 18       |
| 5.5.8 GPC Slice Table                        | 19       |
| 5.5.9 GPC Ranges                             | 20       |
| 5.6 GPC Calibration window                   | 22       |
| 5.6.1 GPC Calibration Options                | 23       |
| 5.6.2 Narrow Calibration                     | 29       |
| 5.6.3 Multiple Broad Linear Calibration      | 31       |
| 5.6.4 Multiple Broad Integral Calibration    | 33       |
| 5.6.5 Broad on Narrow Calibration            | 35       |
| 5.6.6 GPC Calibration Audit Trail            | 37       |
| 5.6.7 Keep in mind that:                     | 38       |
| 5.7 Export                                   | 39       |
| 5.7.1 Export of graphs                       | 39       |
| 5.7.2 Export of data                         | 39       |

|  |           |
|--|-----------|
| 5.7.3 Export Summary Table .....                       | 40        |
| 5.8 Report Setup .....                                 | 41        |
| 5.8.1 Report Setup - Report Header .....               | 41        |
| 5.8.2 Report Setup - Method .....                      | 42        |
| 5.8.3 Report Setup - Calibration .....                 | 43        |
| 5.8.4 Report Setup - Chromatogram .....                | 44        |
| 5.8.5 Report Setup - Results .....                     | 45        |
| <b>6 Clarity GPC operations .....</b>                  | <b>46</b> |
| 6.1 Creating a GPC calibration .....                   | 46        |
| 6.2 Setting a GPC calibration in the method .....      | 48        |
| 6.3 Applying a GPC calibration to a chromatogram ..... | 49        |

To facilitate the orientation in the **GPC Extension** manual and **Clarity** chromatography station, different fonts are used throughout the manual. Meanings of these fonts are:

*Open File* (italics) describes the commands and names of fields in **Clarity**, parameters that can be entered into them or a window or dialog name.

WORK1 (capitals) indicates the name of the file and/or directory.

ACTIVE (capital italics) marks the state of the station or its part.

Chromatogram (blue underlined) marks clickable links referring to related chapters.

The bold text is sometimes also used for important parts of the text and the name of the **Clarity** station. Moreover, some sections are written in format other than normal text. These sections are formatted as follows:

---

**Note:**           Notifies the reader of relevant information.

---

**Caution:**       Warns the user of possibly dangerous or very important information.

---

**I Marks the problem statement or trouble question.**

**Description:**   Presents more detailed information on the problem, describes its causes, etc.

**Solution:**       Marks the response to the question, presents a procedure how to remove it.



# 1 GPC - Gel Permeation Chromatography

The **Clarity GPC** is an optional **Extension** for the **Clarity Chromatography Station** (from version 2.3). The **Clarity Chromatography Station** can acquire data from any **GPC** system with standard analog output. Any **Clarity Instrument** can use *GPC mode*. **GPC Extension** provides interactive and automated **GPC** analysis including recalibration and **GPC** reporting, thus simplifying the retrieval of **GPC** data. It also allows flow rate and multi-detector delay corrections and includes *Narrow*, *Broad* and *Broad on Narrow* calibrations.

**GPC Extension** is also compatible with **Clarity Offline** software.

## 2 Specification

The **GPC Extension** is an optional, fully integrated part of **Clarity** software. It can be ordered as a part of new datastation or as an Extension to existing datastation (p/n A28).

## 3 Installation

The GPC Extension is activated by entering an appropriate user code during the installation of **Clarity** or later using the *Help - User Code...* command from the **Clarity** main window.

To enable the GPC Extension on an *Instrument*, you have to set the corresponding instrument type. To set the instrument type, click the [...] button in the **System Configuration** dialog.

In the invoked *Instrument Type Setting* dialog, select the GPC or GPC-PDA option.

The given *Instrument* may be later switched between the *GPC mode* and *standard chromatography mode* using the *Setting - GPC mode* menu command in the *Instrument* window.

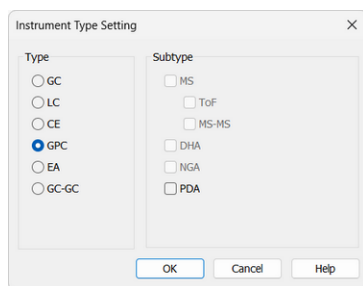


Fig. 1: Switching to GPC mode

## 4 Key Features

The **GPC Extension** brings the following features to the **Clarity** station:

- **Evaluation** - the same chromatograms can be evaluated both in standard and **GPC** mode.
- **GPC Integration** - separate integration tables for **GPC** and standard evaluation are used. There are extensive possibilities for modifying chromatograms. The chromatogram can be changed by entering global parameters or interactively, through the direct graphical modification of the baseline.
- **Overlay** - simultaneous display of a virtually unlimited number of chromatograms. Molecular weight and cumulative molecular weight distributions can be easily compared.
- **GPC Calibration** - *Narrow* or *Broad* standard calibration methods (for more details see the chapter **Basic principles and terms** on pg. 4). combined with flow rate correction and *Universal* calibration. *Multiple broad* standards can be used.
- **GPC Results Table** - display of molecular weight averages together with peak details for active signal. Multiple peaks can be evaluated from one chromatogram.
- **GPC Summary result tables** - display and print of selected results from all simultaneously displayed chromatograms.

The following standard **Clarity** features will also help the user to make the best of the **GPC** analysis in **Clarity**:

- **Measuring** - simultaneous data acquisition from up to four 32-detector chromatographs (4×32 configuration).
- **User calculations** - the user can define custom calculations in the **Result Table** and **Summary Table**. With the use of the integrated editor you can create your own columns from the original ones and use individual mathematical functions.
- **Reports** - user selectable report sections, WYSIWYG formatting of Graphs and Tables.
- **Batch** - automatic batch processing, display, export or print of any number of chromatograms.
- **Automated measurement support** - sequence tables for any set of samples with or without an autosampler.
- **Post-run Options** - automatic display, print, export and start of other programs after completing the measurement.
- **Fraction Collectors** - **GPC** offers support for fraction collectors controlled by **Collect/Waste** and **Next** signals.

### 4.1 Basic principles and terms

- **Gel Permeation Chromatography (GPC)** or **Size Exclusion Chromatography (SEC)** is a specialized chromatography technique for

determination of molecular weight distribution in polymers. Sample of polymer solution, containing mixture of molecules differing in size, is separated on column. Under conditions used for this chromatography mode, the molecules are separated according to size, the larger molecules emerging first and the smaller later. With appropriate polymer standards with known molecular weights, calibration curve describing the dependence between the molecular weight and elution volume can be constructed.

- **Narrow standard** calibration is the most commonly used when polymer standards with narrow molecular weight distribution are available. Calibration curve is constructed from detected peak maximum retention times and known  $M_p$  values. Alternatively,  $(M_w \cdot M_n)^{1/2}$  values can be used, if  $M_p$  values are not declared.
- **Broad standard** calibration is used when only polymer standards with broad molecular weight distribution are available. **Clarity GPC Extension** uses three types of **Broad standard** calibration:
  - **Broad linear** - assuming linear calibration curve for broad peak concerned. Linear calibration equation is calculated from the standard peak elution profile and declared  $M_n$  and  $M_w$  values. Multiple Broad Standards can be used to construct a resulting calibration curve.
  - **Broad integral** - a calibration curve is constructed from the standard peak elution profile and a table of declared cumulative molecular weight distribution values. Multiple Broad Standards can be used to construct a calibration curve.
  - **Broad on narrow** - appropriate  $K$  and  $Alpha$  values are sought for polymer standard with declared  $M_n$  and  $M_w$  values, to fit the standard peak elution profile to existing narrow standard calibration curve.
- **Flow rate correction** - the elution volumes are calculated from retention time and flow rate. Small variations in flow rate have tremendous effect on the correctness of calculated molecular weights. A low molecular weight compound (flow rate marker) can be added to the standards and samples, the retention times in different chromatograms can be than normalized to common base. Flow rate correction can be used with every calibration type using *Peak - Flow Marker* operation in the *Integration Table*.
- **Universal calibration** - the separation of polymer molecules on column is governed by molecular size, not molecular weight. The polymer molecule size is besides its weight dependent on the molecule structure (linear, branched, starlike) and conformation (given by solvent and temperature). A dependence (Mark-Houwink equation) can be used to calculate molecular weights for molecules of the same size, provided the constants  $K$  and  $Alpha$  of the Mark-Houwink equation are known for both polymers. Universal calibration can be used with every calibration type, except **Broad on narrow**.

## 5 GPC Extension description

After installation, new functions of the **GPC Extension** will be available. Only features changed or added to the **Clarity** standard mode are listed and described here.

### 5.1 Instrument window

When you set an instrument to *GPC* in the *System Configuration* dialog, the instrument will open in *GPC Mode*.

This mode configures the instrument to display GPC-type results, such as molecular weight distributions. When *GPC Mode* is active, the title bar displays “GPC:” before the instrument and method names.

You can switch between *Standard Mode* and *GPC Mode* at any time from the *Settings* menu in the *Instrument* window. Switching to *Standard Mode* allows you to view and evaluate results as on a standard LC instrument, even on a GPC-configured instrument.

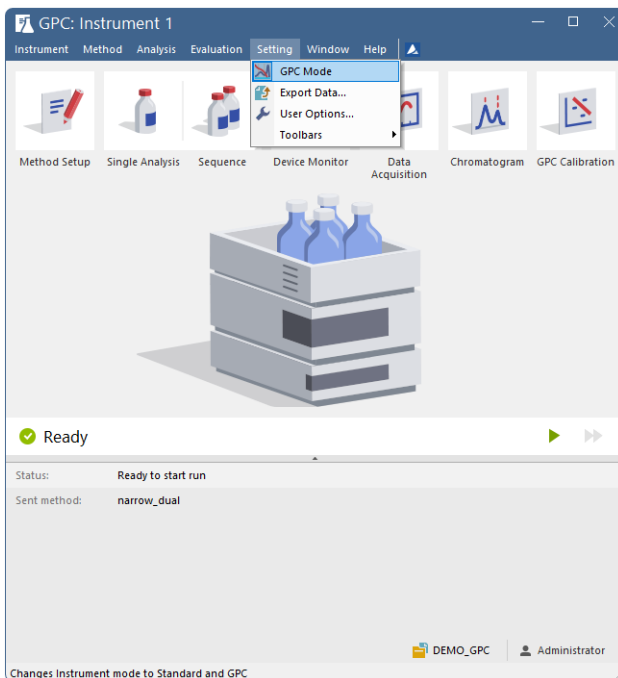


Fig. 2: GPC Instrument window

## 5.2 Single Analysis dialog

The new fields named *K* and *Alpha* and a new *Load K & Alpha* button are present in the *Single Analysis* dialog. The *K* and *Alpha* fields enable to enter the Mark-Houwink parameters used for universal calibrations. The default values 14.1 and 0.7 are valid for linear polystyrene in tetrahydrofuran at 25 °C. The *Load K & Alpha* button enables entering those values from user editable table in the [K & Alpha](#) dialog.

Additionally fields *GPC Std Type* and *GPC Std No* are present. They serve for automated recalibration similarly to the standard *Sample Type* field. Refer to [Sequence window](#) for full description.

If you import chromatograms using the *File - Import Chromatogram...* menu in the *Chromatogram* window, values entered in the *K* and *Alpha* fields will be saved in the imported chromatograms.

Single Analysis

Sample ID:

Sample:

Comments:  ...

Sample Amount:  ISTD1 Amount:  ...

Dilution:  Inj. Volume [µL]:

Sample Type:  Level:

K [dL/g\*10<sup>-5</sup>]:

Alpha:

GPC Std Type:  GPC Std No:

Method:  ...

Analysis | Post-run Options | User Variables

Control


Chromatogram File Name (Data\Instrument 1 - 9\_3\_2024 10\_51\_52 AM)

%e - %R

☐ Enable File Overwrite Counter:

Fig. 3: Single Analysis

## 5.2.1 K & Alpha

The *K & Alpha* dialog can be opened using the *Load K & Alpha* button in the [Single Analysis](#) dialog or using the *Sequence - Select K Alpha...* command () from the [Sequence](#) window when the given **Clarity** Instrument is switched to the **GPC mode**. To load the values into the [Single Analysis](#) dialog or [Sequence](#) window, click the row number besides the compound whose parameters you want to load and then use the *OK* button.

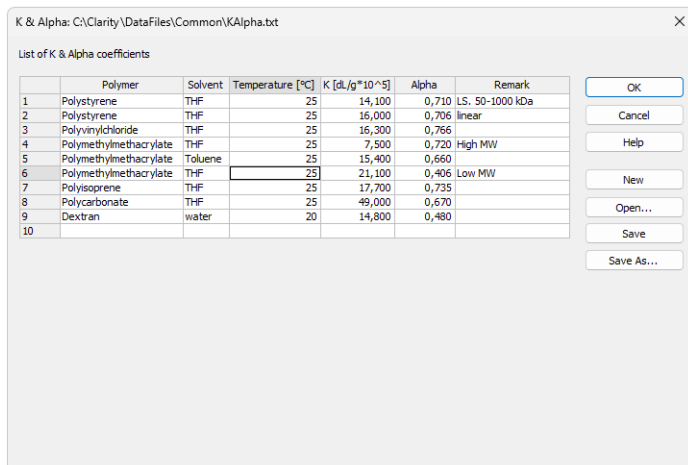


Fig. 4: K & Alpha



## 5.4 Method Setup dialog

New [GPC Integration](#), [GPC Calculation](#) and [GPC Ranges](#) tabs appear in the *Method Setup* dialog. Different parameters for **Standard** and **GPC** mode can be set for automatic chromatogram integration and calculations after acquisition. However, the evaluation and display of results for measured chromatograms is possible only according to the mode (**GPC** or **Standard**) selected.

**Caution:** Performing *Reprocess by Instrument Method* or *Complete Reprocessing* in the *Batch* dialog will always reprocess both the **Standard** and **GPC** part of the method.

### 5.4.1 GPC Integration

The *Method Setup - GPC Integration* dialog is similar to the *Method Setup - Integration* dialog, apart from these three differences:

- The *Solvent Peak* operation excludes selected integrated peaks from the evaluation. This is useful for low molecular weight impurities, which need to be integrated to get the correct baseline, however their results are not desired. **GPC** mode identifies the solvent peaks differently than the **Standard** mode - peaks are marked as solvent if they are found within the selected intervals.
- The *Group* operation is not available in **GPC** mode. To get average values for multimodal MW distribution polymer, integrate the peaks as a single one using the *Baseline Lock* and *Add Positive* functions.
- The *Flow Marker Peak* designates a peak to be used for flow rate corrected calculations. Only one peak in the whole chromatogram can be used as a flow marker, the last occurrence of such operation in the **Integration Table** will be used.
  - *Time A* shows the Max RT of the selected Flow Marker Peak (if selected from the Chromatogram) or can be manually inserted to select such peak.
  - *Time B* is not modifiable and shows the calculated interval width to the both sides of the interval with the Time A in the middle of such interval.
  - *Value* is used for the interval width calculation, i.e. how many percent of the Time A will be the width of the interval from the Time A to both sides.

**Note:** The *Use Flow Rate Correction* checkbox must be checked in the *GPC Calibration Options* dialog for used calibration in addition to the selected *Flow Marker*, otherwise the correction will not be performed.

It is possible to set different settings in both *Method Setup - GPC Integration* and *Method Setup - Integration* dialogs to have the chromatogram evaluated both in the **Standard** and in the **GPC** mode.

## 5.4.2 GPC Calculation

The *Method Setup - GPC Calculation* dialog is analogical to the *Method Setup - Calculation* dialog. The *Parameters* and *Report in Result Table* sections are disabled in *GPC Calculation* dialog.

It is possible to set different settings in both tabs to have the chromatogram evaluated in both **Standard** and **GPC** mode. Type of results is displayed based on the used mode, refer to [Instrument](#) window.

Using **New** button creates new calibration, unlike in a standard mode it is first necessary to set the [GPC Calibration Options](#) before defining the calibration name.

## 5.4.3 GPC Ranges

*GPC Ranges* tab serves for the calculation of peak area percentage for defined ranges of molecular weights or average molecular weight for selected area percentage ranges. The type of the ranges (either *Percent* or *MW*) can be selected using the *Ranges Type* field. The column headers in the table then correspond to the *Ranges Type* selected.

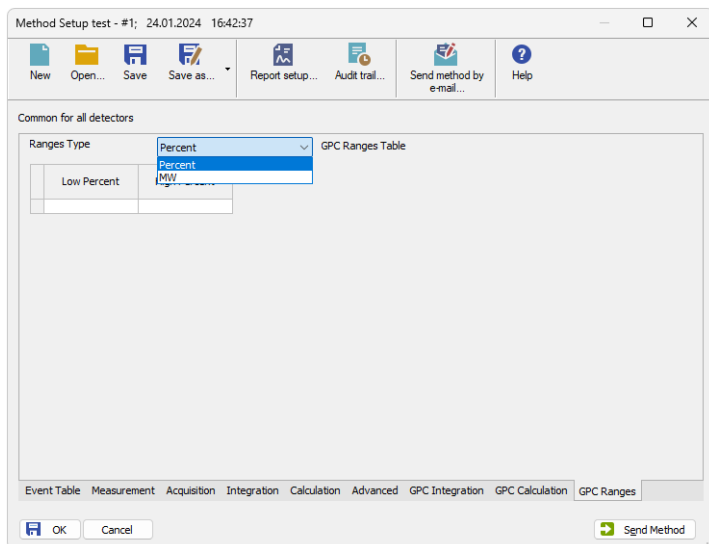


Fig. 6: Method Setup - GPC Ranges

### Low Percent

Sets the fraction start in % of the peak area from the peak start. Displayed when *Percent Ranges Type* is set.

### High Percent

Sets the fraction end in % of the peak area from the peak start. Displayed when *Percent Ranges Type* is set.

**High MW**

Sets the MW range start for the given fraction. Displayed when *MW Ranges Type* is set.

**Low MW**


Sets the MW range end for the given fraction. Displayed when *MW Ranges Type* is set.

*Note:* For example, for the last 10% of the peak area enter set the *Ranges Type* to *Percent* and the values in the range 90 to 100.

Multiple ranges of the same type can be set. The resulting average molar weight is calculated by the following algorithm:

$$MW = \frac{\sum(response \cdot M^2)}{\sum(response \cdot M)}$$

## 5.5 Chromatogram window

The *Chromatogram* window is the central window (opened by clicking the  icon) for displaying, modifying and evaluating chromatograms. In the *Graph* pane, alternatively a [Chromatogram](#), [MW Distribution](#) or [Cumulative MW Distribution](#) tab can be displayed using the appropriate tabs.

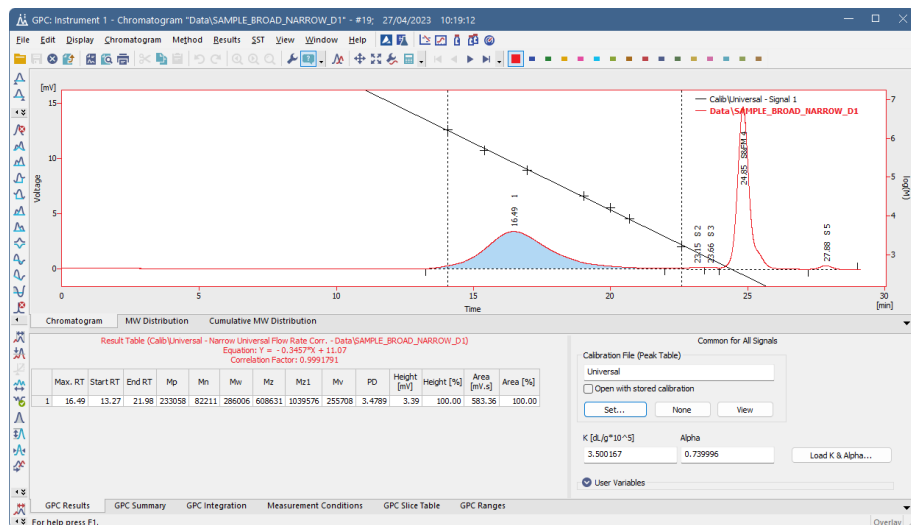


Fig. 7: Chromatogram

In the *Tables* panel, any of the [GPC Results](#), [GPC Summary](#), [GPC Integration](#), [Measurement Conditions](#), [GPC Slice Table](#) and [GPC Ranges](#) tabs can be displayed using the appropriate tabs.

### 5.5.1 Chromatogram

The chromatogram or chromatograms are displayed in the *Graph* pane of the *Chromatogram* window on the *Chromatogram* tab similarly to the standard Clarity. The window properties including the *Overlay* and *Graph Properties* are essentially the same as in **Standard** mode and are described in the **Clarity User** and **Clarity Reference Guides**. The *Peak Name* taken from calibration (integration function *Force Peak Name* still can be used to label peak) and *Group* peak tags are not available in **GPC** mode.

By default The GPC calibration curve is overlaid above the chromatogram curve in the *Chromatogram* graph pane. Is displayed for the active signal and it can be switched off in the [Graph Properties - GPC Options](#) dialog (available from local menu). While the curve is displayed the right Y-axis displays molecular weights corresponding to the curve. By default the axis uses logarithmic scale, this can be changed in the graph properties. The axis values and range are fixed regardless of the zoom in the *Chromatogram* window.

**Note:** When auxiliary signals are present and displayed in the chromatogram graph, the right Y-axis will prioritize showing their values over the GPC calibration curve. To display the axis for the calibration curve, the auxiliary signal axis must be hidden (can be set in *Graph Properties - Auxiliary Signal Details*).

### 5.5.1.1 Graph Properties - GPC Options

The *GPC Options* tab of the *Graph Properties* dialog is used to customize the appearance of the curves displayed on the [Chromatogram](#) tab of the *Chromatogram* window.

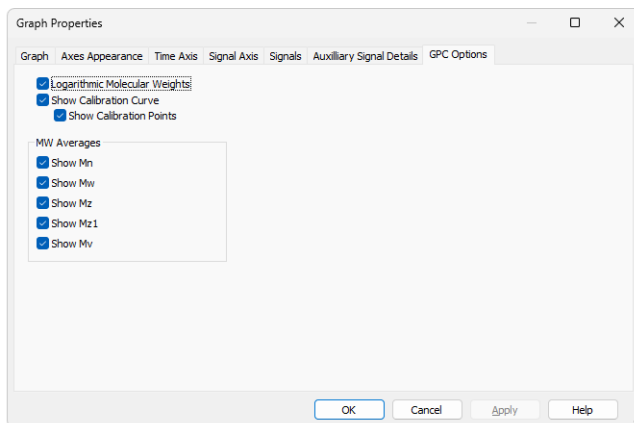


Fig. 8: Graph Properties - GPC Options

#### Logarithmic Molecular Weights

Sets the format of the molecular weight axis (right Y-axis) showing the units for the overlayed GPC calibration curve. If checked, shows the units as the logarithm of the MW, while unchecked displays the non-linear axis in MW.

#### Show Calibration Curve

Switches the display of the **GPC calibration curve** overlayed over the signal graph on the [Chromatogram](#) tab of the *Chromatogram* window on and off.

#### Show Calibration Points

Switches the display of the calibration points for the **GPC calibration curve** overlayed over the signal graph on the [Chromatogram](#) tab of the *Chromatogram* window on and off.

#### MW Averages

Switches the display of the particular points in the active signal graph displayed on the [Chromatogram](#) tab of the *Chromatogram* window. More information on these points can be get in the chapter "**GPC Results**" on pg. 17.

5.5.2 MW Distribution

The *MW Distribution* tab in the *Graph* pane of the *Chromatogram* window shows the molecular weight distribution of the active peaks from the (possibly overlaid) signals or chromatograms. In signals with multiple evaluated peaks, the peak is set active by clicking on its row in the **Result Table** for the respective signal. The retention time of the active peak is indicated at the end of its legend in the *Graph* pane.

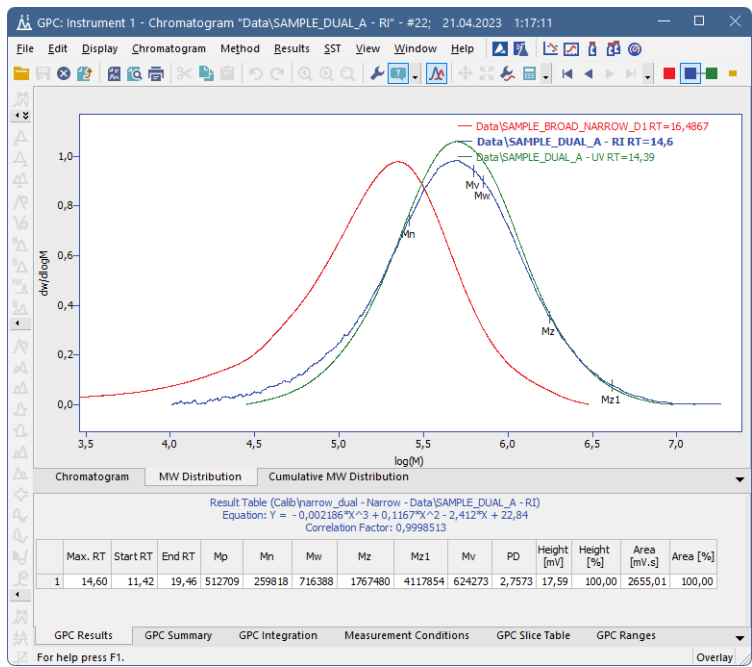


Fig. 9: Chromatogram - MW Distribution

### 5.5.3 Cumulative MW Distribution

The *Cumulative MW Distribution* tab in the *Graph* pane of the *Chromatogram* window shows the cumulative molecular weight distribution (in %) of the active peaks from the (possibly overlaid) signals or chromatograms. In signals with multiple evaluated peaks, the peak is set active by clicking on its row in the **Result Table** for the respective signal.

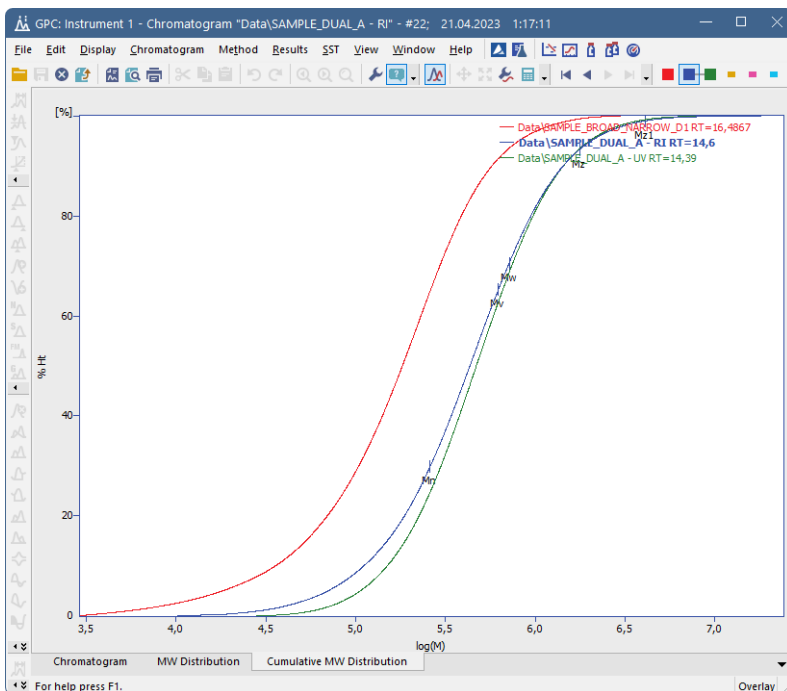


Fig. 10: Chromatogram - Cumulative MW Distribution

**Note:** By integrating multiple peaks as single one it is possible to get a single molecular weight distribution curve for multi-modal polymer samples.

## 5.5.4 GPC Results

The results for the active chromatogram (signal) can be found in the **Result Table** on the *GPC Results* tab.

On the right side of the tab the used calibration file and Mark-Houwink parameters can be set or changed.

The following columns can be displayed in tables:

Tab. 1: List of columns available in the GPC Extension

| Column name          | Description                                   |
|----------------------|---|
| Max. RT              | Retention time of peak maximum                |
| Start RT             | Retention time of peak integration start      |
| End RT               | Retention time of peak integration end        |
| Mp                   | Molecular Weight at peak maximum              |
| Mn                   | Molecular Weight number average               |
| Mw                   | Molecular Weight weight average               |
| Mz                   | Molecular Weight Z average                    |
| Mz1                  | Molecular Weight Z+1 average                  |
| Mv                   | Molecular Weight viscosity average            |
| PD                   | Polydispersity (Mw/Mn)                        |
| Flow Rate Correction | Flow rate correction factor                   |
| Height [mV]          | Peak height                                   |
| % Height             | Percentage of total height of evaluated peaks |
| Area [mV.s]          | Peak area                                     |
| % Area               | Percentage of total area of evaluated peaks   |

Additional columns can be displayed or calculated using the *Setup Columns...* and *User Columns - Add...* commands from the local menu.

## 5.5.5 GPC Summary

Using the *GPC Summary* tab, a **Summary Result Table** for all displayed signals is accessible. Its appearance can be customized using the *Setup Columns...* and *Summary Options...* commands from the local menu.

| Summary Table |    |         |        |        |        |             |
|---------------|----|---------|--------|--------|--------|-------------|
|               |    | Peak 1  |        |        |        |             |
|               |    | Max. RT | Mp     | Mn     | PD     | Area [mV.s] |
| SAMPLE_DUAL_A | RI | 14,60   | 512709 | 259818 | 2,7573 | 2655,01     |
|               | UV | 14,39   | 561917 | 337130 | 2,1441 | 717,02      |
| SAMPLE_DUAL_B | RI | 15,69   | 197939 | 67149  | 3,1854 | 1790,56     |
|               | UV | 15,57   | 202728 | 70988  | 3,0288 | 529,37      |
| SAMPLE_DUAL_C | RI | 14,05   | 862015 | 221952 | 4,5400 | 941,76      |
|               | UV | 13,98   | 820218 | 278823 | 3,5142 | 4264,02     |

<
>

GPC Results
GPC Summary
GPC Integration
Measurement Conditions

Fig. 11: GPC Summary

5.5.6 GPC Integration

In the **Integration Table** on the *GPC Integration* tab all operations used for the **GPC** peak integration are displayed and editable. The operations can be entered directly into the table or interactively effected on the chromatogram in the *Graph* pane using the *Peak*, *Baseline* and *Integration* toolbars.

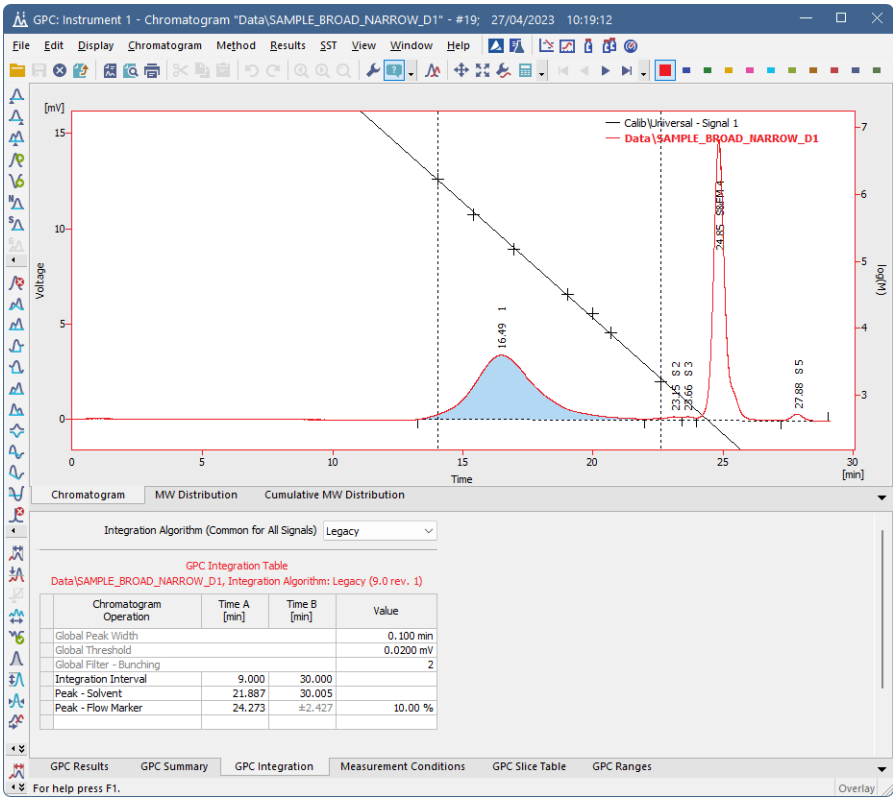


Fig. 12: Chromatogram - GPC Integration

Most operations are common for **Standard** and **GPC** mode and are described in the **Clarity User** and **Clarity Reference Guides**. See "GPC Integration" on page 10 for the list of differences.

5.5.7 Measurement Conditions

The *Measurement Conditions* tab is common both for **Standard** and **GPC** mode.

## 5.5.8 GPC Slice Table

The *GPC Slice Table* tab displays the **Cumulative Molecular Weight Distribution Table** for the active peak. In signals with multiple evaluated peaks, the peak is set active by clicking on its row in the **Result Table** on the [GPC Results](#) tab for the respective signal. The table appearance can be modified using the *Setup Columns...* command from the local menu.

Average Num.  Slice Table (Broad on narrow - Broad on Narrow Flow Rate Corr. - SAMPLE\_BROAD\_NARROW\_D1 RT=16,4867)

|    | RT     | Response | Norm. Ht % | Cum. Ht % | M       | logM   | dW/dlogM | W      | Outside Calib. |
|----|--------|----------|------------|-----------|---------|--------|----------|--------|----------------|
| 1  | 13,283 | 0,0028   | 0,0008     | 0,0008    | 2984028 | 6,4748 | 0,0007   | 0,0000 | 1              |
| 2  | 13,317 | 0,0092   | 0,0025     | 0,0033    | 2905896 | 6,4633 | 0,0022   | 0,0000 | 1              |
| 3  | 13,350 | 0,0146   | 0,0040     | 0,0073    | 2829811 | 6,4518 | 0,0035   | 0,0000 | 1              |
| 4  | 13,383 | 0,0222   | 0,0061     | 0,0135    | 2755717 | 6,4402 | 0,0053   | 0,0000 | 1              |
| 5  | 13,417 | 0,0292   | 0,0081     | 0,0216    | 2683563 | 6,4287 | 0,0070   | 0,0000 | 1              |
| 6  | 13,450 | 0,0369   | 0,0103     | 0,0318    | 2612298 | 6,4172 | 0,0089   | 0,0000 | 1              |
| 7  | 13,483 | 0,0448   | 0,0125     | 0,0443    | 2544874 | 6,4057 | 0,0108   | 0,0000 | 1              |
| 8  | 13,517 | 0,0546   | 0,0152     | 0,0595    | 2478241 | 6,3941 | 0,0132   | 0,0000 | 1              |
| 9  | 13,550 | 0,0636   | 0,0178     | 0,0773    | 2413352 | 6,3826 | 0,0154   | 0,0000 | 1              |
| 10 | 13,583 | 0,0739   | 0,0207     | 0,0979    | 2350163 | 6,3711 | 0,0179   | 0,0000 | 1              |
| 11 | 13,617 | 0,0848   | 0,0238     | 0,1217    | 2288628 | 6,3596 | 0,0206   | 0,0000 | 1              |

GPC Results   GPC Summary   GPC Integration   Measurement Conditions   GPC Slice Table   GPC Ranges

Fig. 13: Chromatogram - GPC Slice Table

The number of slices depends on the peak length and *Peak Width* value used in the **Integration Table** on the [GPC Integration](#) tab. The slices can be averaged by entering a number in the range  $<1, 100>$  to the *Average Num.* field in the table title area. For the integrated peak, following values are available for the specified time intervals (slices):

### RT

Retention time of the slice (averaged).

### Response

Slice peak height (averaged).

### Norm. Ht

Normalized slice height (summed).

### Norm. Ht %

Percentage of the slice height from total of all slices height (summed to give total 100%).

### Cum. Ht

Cumulative slice height (averaged).

### Cum. Ht % Graph

Cumulative percentage of the slice height from the total of all slice heights in the inverse order (increasing with increasing M) (averaged).

### Cum. Ht %

Cumulative percentage of the slice height from the total of all slices heights (averaged).

### M

The molecular weight corresponding to the slice retention time (averaged).

### Log M

The logarithm of the molecular weight corresponding to the slice retention time (averaged).

**dW/dlog M**

Normalized distribution of slice molecular weights used for the graph in the [MW Distribution](#) tab.

**W**

Normalized slice height used for molecular weight distribution calculation.

**Outside Calib**

Flag marking whether the slice is inside or outside of the used calibration retention time range. Outside of the range gives value 1, while inside the range gives value 0.

**5.5.9 GPC Ranges**

This tab presents the same parameters as on the [Method Setup - GPC Ranges](#) tab along with the computed results. For *MW mode*, *Result Percent* field is calculated, while for *Percent mode*, *Result MW* is shown.

**Result MW**

Displays the average of MW values for the percent range set.

**Result Percent**

Displays the peak area percentage for the MW range set.

**Caution:** Note *Result Percent* column ① in *GPC Ranges* tab displays results based on chromatogram peak area only if the *Chromatographic Peak* ② for *NormHt* based on is selected in *GPC Calibration Options*.

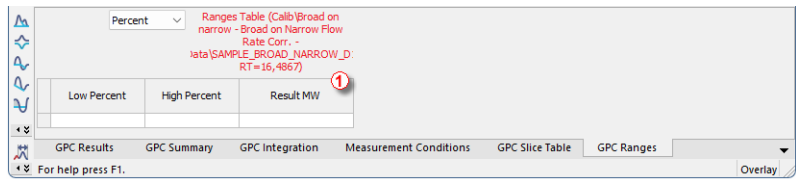


Fig. 14: Results Percent column in GPC Ranges tab

GPC Calibration Options (Calib\narrow\_dual) ? X

GPC Calibration Options

Calibration Type

Narrow Calibration

Number of Signals 2

Calibration Description:

Narrow standard calibration

☐ Use Flow Rate Correction

☐ Use Universal Calibration

☐ Use Simplified Computations of M Averages

Norm:rt based on

Integral Percentages

Normal MW Distribution

Normal MW Distribution

Chromatographic Peak

|  | Signal   | Flow Marker RT [min] | Curve Fit Type |
|--|----------|----------------------|----------------|
|  | Signal 1 | 0,000                | Cubic          |
|  | Signal 2 | 0,000                | Cubic          |

Recalibration Search Window 10 [%] K [dL/g\*10^-5] 14,1



Peak Height 20 [%] Alpha 0,7

OK Cancel Help

Fig. 15: GPC Calibration Options

- Note:** The *GPC Ranges Table* settings are stored in the chromatogram. You can change them on the *GPC Ranges* tab for the current chromatogram. Alternatively you can change them in the method and batch reprocess the respective chromatograms with this method.
- Note:** Multiple ranges of the same type can be set. For MW ranges not containing any peak points no value is calculated.
- Note:** For chromatograms with multiple peaks the table is shown for the active peak (as selected in the **Result Table** on the [GPC\\_Results](#) tab). Its retention time is indicated in table header.

5.6 GPC Calibration window

The *GPC Calibration* window (opened by clicking the  icon which replaces the  icon when in the **GPC** mode) is used for creating, modifying and displaying calibration curves.

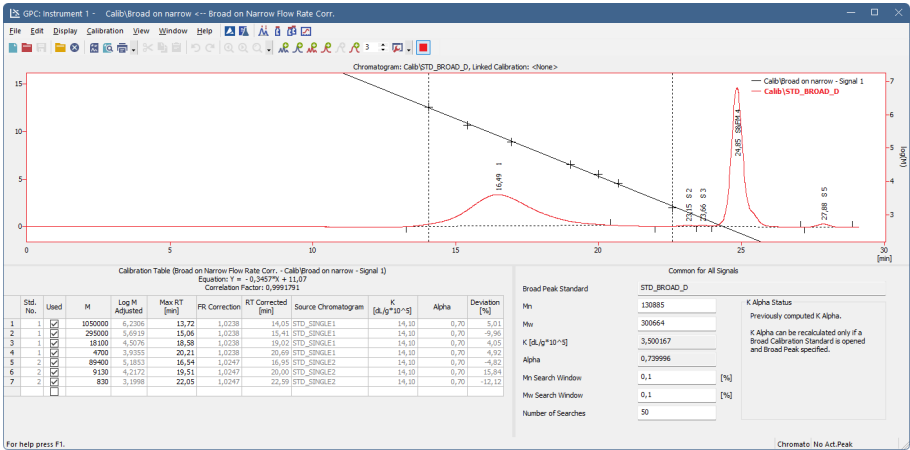


Fig. 16: GPC Calibration

In the *Graph* pane of the *GPC Calibration* window the standard chromatogram with the calibration curve is displayed, same as in the standard *Calibration* window. Its appearance can be modified using the *Graph Properties* dialog accessible through the *Properties...* command from the local menu.

The **Calibration Summary Table** is displayed in the *Table* pane of the *Calibration* window. Its appearance depends on the selected *Calibration Type*.

### 5.6.1 GPC Calibration Options

When creating a new calibration, the *GPC Calibration Options* dialog enabling to set the new *Calibration Type* will be displayed first.

**Caution:** Be aware that the *Calibration Type* can not be changed later.

GPC Calibration Options (Calib\test)

Calibration Type: Narrow Calibration Number of Signals: 2

Calibration Description:

☐ Use Flow Rate Correction ☒ Use Universal Calibration ☐ Use Simplified Computations of M Averages

NormHit based on: Chromatographic Peak Integral Percentages: Decreasing with M

| Signal   | Flow Marker RT [min] | Curve Fit Type |
|----------|----------------------|----------------|
| Signal 1 | 0,000                | Cubic          |
| Signal 2 | 0,000                | Cubic          |

Recalibration Search Window: 0 [%]  $K [dL/g \cdot 10^{-5}]$ : 14,1

Peak Height: 20 [%] Alpha: 0,7

OK Cancel Help

Fig. 17: GPC Calibration Options

The following calibration types can be selected:

- *Narrow Calibration*
- *Multiple Broad Integral Calibration*
- *Multiple Broad Linear Fit Calibration*
- *Broad On Narrow Calibration*

The type of calibration used is indicated in the **Calibration Table** title line as well as in the chromatogram **Result Table** title line.

#### Use Flow Rate Correction

Using this checkbox will amend the calibration curve and calculations respectively, if the *Flow Marker Peak* was identified for standards and sample. The use is indicated in the **Calibration Table** title line as **FR Correction** and in the chromatogram **Result Table** title line by the **Flow Rate Correction** inscription. In such case the calibration curve is constructed for each chromatogram separately.

#### Use Universal Calibration

This checkbox will amend the calibration curve and calculations according to the Mark-Houwink parameters entered for standards and sample. The use is indicated in the **Calibration Table** title line as well as in the chromatogram **Result Table** title line by the inscription **Universal**. In such case the calibration curve is constructed for each chromatogram separately.

---

*Note:* The Alpha value is used for calculation of  $M_v$  (viscosity  $M$ ), regardless of state of this checkbox (see formula below)

### **Use Simplified Computations of M Averages**

Checking this checkbox will cause the  $M$  averages being computed in the simplified manner rather than the standard manner. The differences in the equations are shown below:

---

*Note:* The differences in the  $M$  average computation results using simplified or standard calculations will only be present with non-linear calibrations.

## Simplified calculations of the M averages

$$M_n = \frac{\sum_{i=1}^n H_i}{\sum_{i=1}^n \frac{H_i}{M_i}}$$

$$M_w = \frac{\sum_{i=1}^n H_i \cdot M_i}{\sum_{i=1}^n H_i}$$

$$M_z = \frac{\sum_{i=1}^n H_i \cdot M_i^2}{\sum_{i=1}^n H_i \cdot M_i}$$

$$M_{z1} = \frac{\sum_{i=1}^n H_i \cdot M_i^3}{\sum_{i=1}^n H_i \cdot M_i^2}$$

$$M_v = a \sqrt[n]{\frac{\sum_{i=1}^n H_i \cdot M_i^a}{\sum_{i=1}^n H_i}}$$

where  $i$  is the number of the peak slice,  $n$  total number of peak slices,  $H_i$  is the normalized height of the peak slice,  $M_i$  molecular weight of the peak slice based on the calibration curve and  $a$  is the Mark-Houwink constant.

---

**Standard calculations of M averages**

$$M_n = \frac{\sum_{i=1}^n H_i \cdot D_i}{\sum_{i=1}^n \frac{H_i \cdot D_i}{M_i}}$$

$$M_w = \frac{\sum_{i=1}^n H_i \cdot M_i \cdot D_i}{\sum_{i=1}^n H_i \cdot D_i}$$

$$M_z = \frac{\sum_{i=1}^n H_i \cdot M_i^2 \cdot D_i}{\sum_{i=1}^n H_i \cdot M_i \cdot D_i}$$

$$M_{z1} = \frac{\sum_{i=1}^n H_i \cdot M_i^3 \cdot D_i}{\sum_{i=1}^n H_i \cdot M_i^2 \cdot D_i}$$

$$M_v = \sqrt[a]{\frac{\sum_{i=1}^n H_i \cdot M_i^a \cdot D_i}{\sum_{i=1}^n H_i \cdot D_i}}$$

where  $i$  is the number of the peak slice,  $n$  total number of peak slices,  $H_i$  is the normalized height of the peak slice,  $M_i$  molecular weight of the peak slice based on the calibration curve,  $a$  is the

---

Mark-Houwink constant and  $D_i$  stands for the derivation of the calibration's inverse function at the retention time of the peak slice ( $T_i$ ):

$$D_i = \frac{\delta T_i}{\delta \log M_i}$$

**Note:** Checking the *Use Simplified Computations of M Averages* checkbox will also influence the calculation of the calibration curve for the *Multiple Broad Linear* and *Broad on Narrow* calculation methods as both of them use some of the M averages values for the calculation.

### Number of Signals

The value in this field determines for how many signals the calibration curves are constructed and displayed. The value is increased automatically according to the number of signals in chromatograms used for calibration.

#### Flow Marker RT [min]

The fields in this column are filled with values from the first standard chromatogram and are used as a base for all subsequent standards and samples. The field can be edited and the value is then applied as a base for all chromatograms (including the first one).

#### Curve Fit Type

This column is used to set the curve fit type for the particular signal. The *Curve Fit Type* can be selected from polynomial regression with **n** value between 1 and 5.

### NormHt based on

Defines the calculations in the **Slice Table** for chromatograms calculated according to this calibration. The default *Normal MW Distribution* option calculates the Slice Table from the MW distribution, while the *Chromatographic Peak* option calculates the slices from integrating the peak. A default value for new GPC calibrations is *Chromatographic Peak*.

### Integral Percentages

Defines the calculation of percentages for the *Multiple Broad Integral Calibration*. In case of the default *Decreasing with M* option, the values in the *Percent* column are calculated with increasing trend with the retention time (and with opposite trend to *M* values), the other *Increasing with M* option calculates the *Percent* column with the same trend as *M* values, decreasing with increasing retention times.

### Recalibration Search Window

Sets the maximum deviation (in %) of the *Standard Peak* retention time from the stored value to perform the recalibration.

### Peak Height

The value (set in %) determines the position of points used for the construction of calibration curve in case multiple broad standards with Hamielec linear fit are used.

**K**

This field sets one of the Mark-Houwink equation parameters used for universal calibration. Default values are used to display the calibration curve if no chromatogram is opened (otherwise the *K* and *Alpha* from the actual chromatogram are used).

**Alpha**

This field sets one of the Mark-Houwink equation parameters used for universal calibration. Default values are used to display the calibration curve if no chromatogram is opened (otherwise the *K* and *Alpha* from the actual chromatogram are used).

---

**Caution:** Change in this value will have effect only after the recalibrating by the *Set Broad Peak* command.

---

**Note:** Some fields may be unavailable or not editable depending on the calibration type selected.

---

**Note:** The *K* and *Alpha* fields can be edited and then the calibration curve in the *Calibration* window will be displayed according to the modified values (independently to the display in the *Chromatogram* window).

---

5.6.2 Narrow Calibration

Narrow calibration can be used if narrow molecular weight distribution standards (polydispersity < 1.2) are available for given polymer. Calibration curve is constructed from detected peak maximum retention times and known **Mp** values. Alternatively,  $(Mw.Mn)^{1/2}$  values can be used, if **Mp** values are not declared.

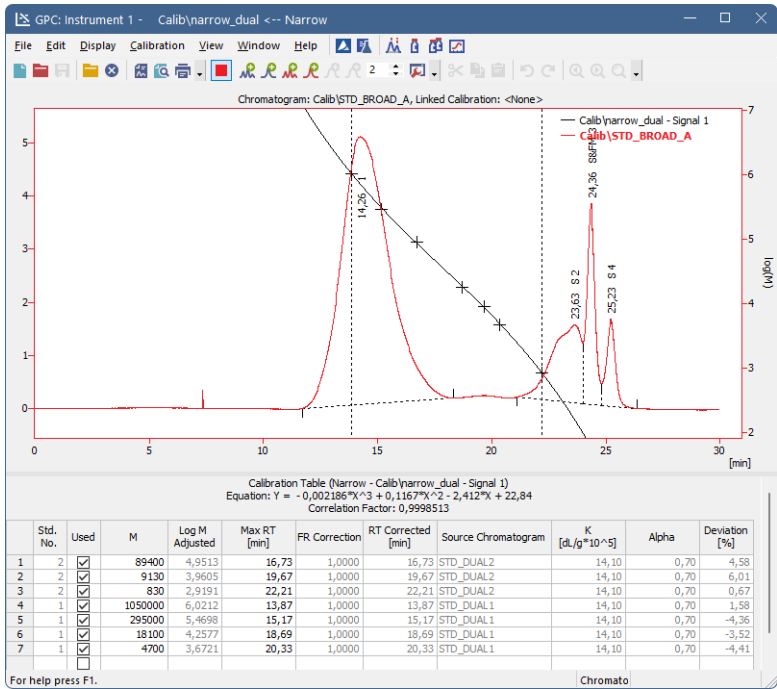


Fig. 18: GPC Calibration (Narrow)

After selecting the calibration type, a standard chromatogram can be opened. The **Add All Narrow Peaks** icon will transfer all integrated peaks data to the **Calibration Summary Table**, setting a new standard number for each standard chromatogram opened and creating a new line for each peak in the standard. The **Add Narrow Peak** icon will perform this operation peak by peak.

For multi-signal standards the **Set RT To All Narrow Peaks** icon is used for transferring the *RT* on subsequent signals to calibration for peaks where *RT* is not used. Operation is performed only for peaks with *Std. No.* value equal to current *Std. No.* indicated on the **Window** toolbar of the **Calibration** window. This command can also be used for recalibration by selected standard. In this case *RT* of standard peak must match *Std. No.* values as described and also match **Recalibration Search Window** of peak being recalibrated (for more details see the chapter **GPC Calibration**

**Options** on pg. 23). The *Set RT To Narrow Peak*  icon performs this operation peak by peak.

---

*Note:* When a new compound is manually created in *Calibration Table* there are pre-filled default values 0 for *M*, *Log M*, *Log M Adjusted*, *Max RT*, *Flow Marker RT*, *RT Corrected*, *Deviation* and *Intrinsic Viscosity* columns; default values 1 for *FR Correction* and *Source Chromatogram* columns. Column *K* is pre-filled with default value 14,10 and column *Alpha* is pre-filled with default value 0,70.

### 5.6.3 Multiple Broad Linear Calibration

This method utilizes **Broad Standards** with solely known *Mn* and *Mw* values. The Hamielec method assumes that the calibration can be approximated by straight line in the area of **Broad Peak** being calibrated. The software uses numeric Newton method for calculating *A* and *B* parameters of linear calibration curve of the given peak. Accuracy of *Mn* and *Mw* values calculated is about 1 e-5 in comparison to *Mn* and *Mw* values documented for the standard. Multiple Broad Peaks can be used subsequently to extend the area of calibration reliability.

Three points for each peak are used to construct a resulting calibration curve. One point is peak *Max RT*, the others are computed by *Peak Height* value entered in the [GPC Calibration Options](#) dialog.

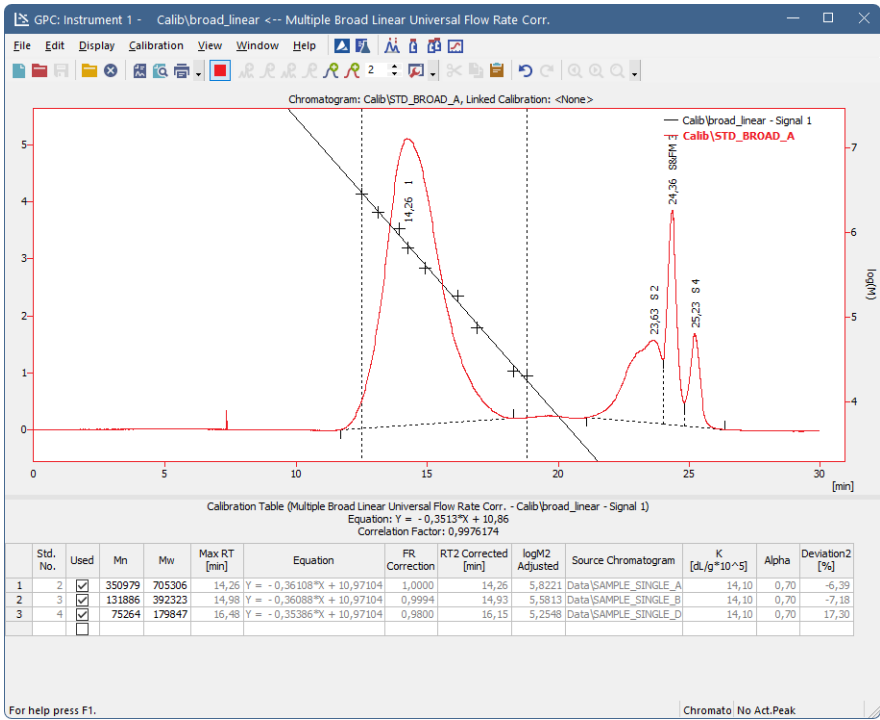


Fig. 19: GPC Calibration (Broad Linear)

After selecting the calibration type, a standard chromatogram can be opened. The *Add Broad Peak* icon will transfer the integrated peak data to the **Calibration Summary Table**, setting a new standard number and creating a new line for each peak.

For multi-signal standards the *Set Broad Peak* icon is used for transferring the peak data on subsequent signals to calibration. Operation is performed only for peaks

with *Std. No.* value equal to current *Std. No.* indicated on the **Window** toolbar of the **Calibration** window.

*Note:* The last **Broad Peak** is temporarily remembered and used in subsequent recalculations. Current **Broad Peak** is indicated in right lower corner of the [Calibration](#) window.

*Note:* When a new compound is manually created in *Calibration Table* there are pre-filled default values 0 for *Mn*, *Mw*, *Max RT*, *RT1*, *RT2*, *RT3*, *Flow Marker RT*, *RT1 Corrected*, *RT2 Corrected*, *RT3 Corrected*, *M1*, *M2* and *M3* columns; default values -1 for *logM1*, *logM2*, *logM3*, *logM1 Adjusted*, *logM2 Adjusted* and *logM3 Adjusted* columns; default values 1 for *FR Correction* and *Source Chromatogram* columns; default values -90 for *Deviation1*, *Deviation2* and *Deviation3* columns; default values 2,81 for *Intrinsic Viscosity 1*, *Intrinsic Viscosity 2* and *Intrinsic Viscosity 3* columns. Column *K* is pre-filled with default value 14,10 and column *Alpha* is pre-filled with default value 0,70.

5.6.4 Multiple Broad Integral Calibration

The standard to be used will have a table detailing the **% Cumulative Weight Fraction** (*Percent [%]* in **Clarity**) and **Molecular Weight (M)** values supplied by the manufacturer of the standard. Multiple Broad Peaks can be used subsequently to extend the area of calibration reliability.

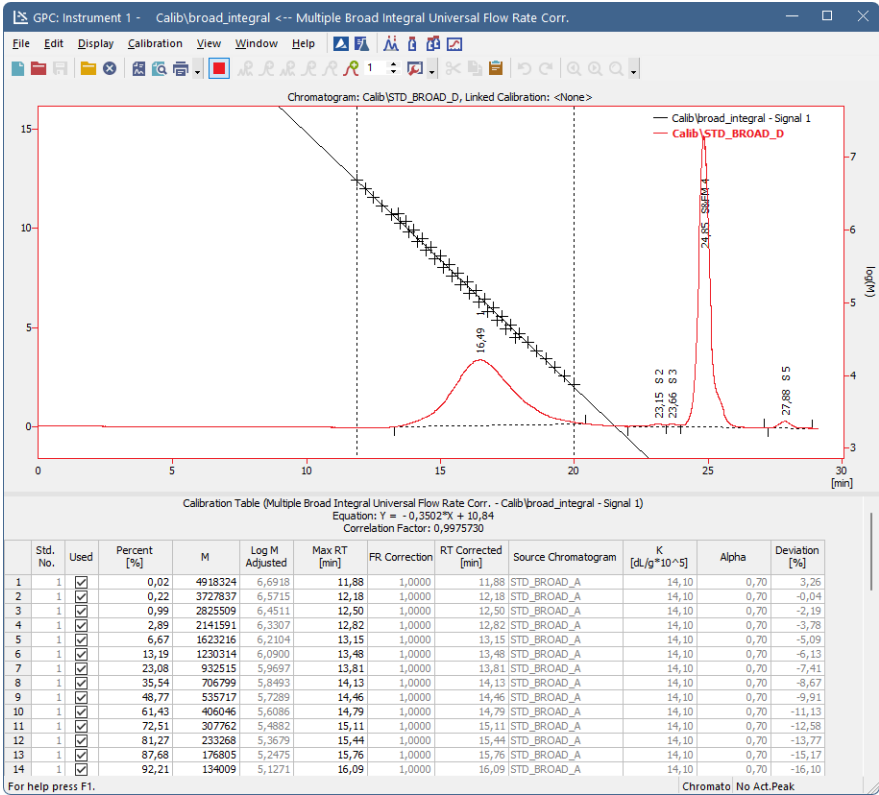




Fig. 20: GPC Calibration (Broad Integral)

After selecting the calibration type the *Percent [%]* and *M* parameters must be entered manually. To paste a table of desired parameters correctly, select only the cell where the table should start. When more cells are selected, the only first row of the table will be copied to the Calibration Table.

Standard chromatogram should be opened next. The *Set Broad Peak*  icon will recalculate the *RT* values according to the data entered into the **% Cumulative Weight Fraction** field using the peak being calibrated. Operation is performed only for rows with *Std. No.* value equal to current *Std. No.* indicated in the **Window** toolbar of the **Calibration** window.

The % **Cumulative Weight Fraction** and **Molecular Weight** values are common for all signals. If this type of calibration is to be used for multi signal chromatograms, the *Detector Delay*  function should be used to put the signals on a common time base.

*Note:* The last **Broad Peak** is temporarily remembered and used in subsequent recalculations. Current **Broad Peak** is indicated in right lower corner of the [Calibration](#) window.

*Note:* When a new compound is manually created in *Calibration Table* there are pre-filled default values 0 for *M*, *Log M*, *Log M Adjusted*, *Max RT*, *Flow Marker RT*, *RT Corrected*, *Deviation* and *Intrinsic Viscosity* columns; default values 1 for *FR Correction* and *Source Chromatogram* columns. Column *K* is pre-filled with default value 14,10 and column *Alpha* is pre-filled with default value 0,70.

5.6.5 Broad on Narrow Calibration

This method first requires the calibration of the column with a series of **Narrow Standards** and then a calibration with a **Broad Standard** with known *Mn* and *Mw*. It relies on a principle that **Narrow Standards** are used to characterize the shape of the calibration curve, while the **Broad Standard** is then run to compute suitable *K* and *Alpha* using numeric Newton method. Accuracy of *Mn* and *Mw* values calculated is about 1 e-5 compared to *Mn* and *Mw* values documented for the standard.

*Note:* The calculated *K* and *Alpha* values are then used for any calculations of unknown samples in the *Chromatogram* window - the values of *K* and *Alpha* set when measuring the chromatogram are ignored.

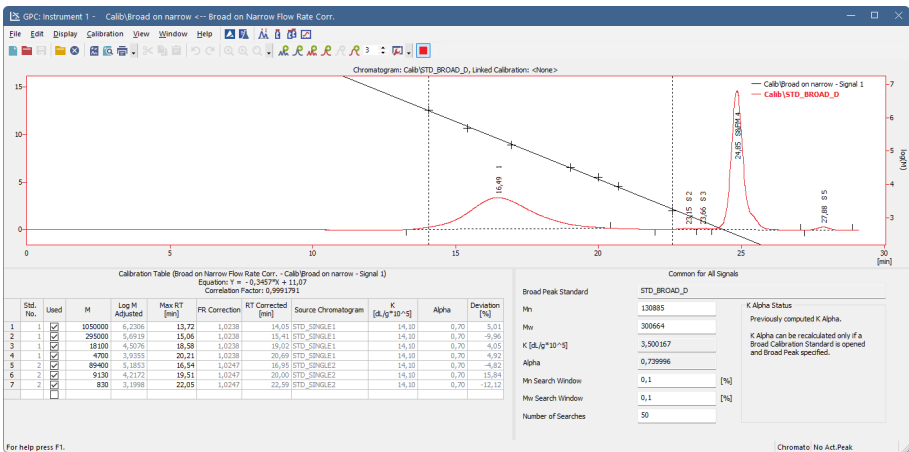



Fig. 21: GPC Calibration (Broad on Narrow)

After selecting the calibration type, a narrow standard chromatogram can be opened. The *Add All Narrow Peaks* icon will transfer all integrated peaks data to the **Calibration Summary Table**, setting a new standard number for each standard chromatogram opened and creating a new line for each peak in the standard. The *Add Narrow Peak* icon will perform this operation peak by peak.

For multi-signal standards the *Set RT To All Narrow Peaks* icon is used for transferring the *RT* on subsequent signals to calibration for peaks where *RT* is not used. Operation is performed only for peaks with *Std. No.* value equal to current *Std. No.* indicated on the **Window** toolbar of the *Calibration* window. This command can also be used for recalibration by selected standard. In this case *RT* of standard peak must match *Std. No.* values as described and also match *Recalibration Search Window* of peak being recalibrated (for more details see the chapter **GPC Calibration Options** on pg. 23). The *Set RT To Narrow Peak* icon performs this operation peak by peak.

Broad Standard chromatogram can be opened next and  $M_n$  and  $M_w$  values should be entered. The *Set Broad Peak*  icon will compute desired  $K$  and  $Alpha$  values and display them in appropriate input boxes.

The  $K$   $Alpha$  Status area informs whether  $K$  and  $Alpha$  values are recalculated properly after last operation in the *GPC Calibration*. If the Broad Peak was set and the recalculation was performed without an error, the status is marked as *OK*. Otherwise a description is displayed in case the *Broad Peak* was not set or the computation of narrow calibration failed.

---

*Note:* When a new compound is manually created in *Calibration Table* there are pre-filled default values 0 for  $M$ ,  $Log M$ ,  $Log M$  Adjusted,  $Max RT$ ,  $Flow Marker RT$ ,  $RT$  Corrected,  $Deviation$  and  $Intrinsic Viscosity$  columns; default values 1 for  $FR$  Correction and *Source Chromatogram*. Column  $K$  is pre-filled with default value 14,10 and column  $Alpha$  is pre-filled with default value 0,70.

### 5.6.6 GPC Calibration Audit Trail

As the [GPC Calibration](#) window is not the same as the normal *Calibration* window, the events that should be saved into the audit trail log might also differ. On the **Clarity** instrument marked as GPC instrument, a new tab in the *Audit Trail Settings* dialog appears:

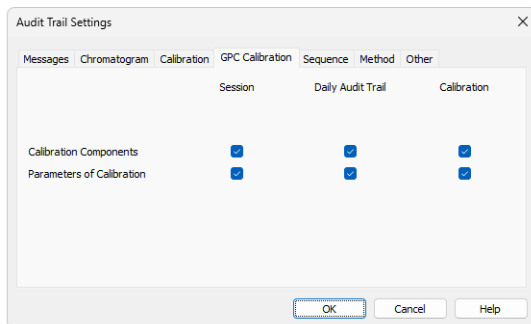


Fig. 22: GPC Calibration tab

The options to be enabled or disabled on this tab are the same as the options available on the *Calibration* tab of the *Audit Trail Settings* dialog, but relate only to the **GPC Calibration** operations.

### 5.6.7 Keep in mind that:

- The calibration curve and equation will not be displayed, if the equation could not be constructed using all the points marked as used. Please check that you have entered retention times and molecular weights for all points to be used in the calibration.
- Calibration curve is cut off on nearest local extreme outside the *Minimum RT* and *Maximum RT* to assure it is monotonous on definition interval. Definition interval is checked during all computations.
- If local extreme occurs between the *Minimum RT* and *Maximum RT*, *Invalid points to construct curve* error will be reported. Check the correctness of your data (typing mistake in *Mp* value is a typical problem) or decrease the polynomial fit degree.
- The last **Broad Peak** is temporarily remembered and used in subsequent recalculations. Current **Broad Peak** is indicated in lower-right corner of the *Calibration* window.
- The **Universal Calibration** cannot be used for **Broad On Narrow** because computed *K* and *Alpha* values will be overwritten by *K* and *Alpha* of the unknown sample. If you know *K* and *Alpha* of the unknown sample, use **Narrow Universal Calibration**.
- When **Broad On Narrow** calibration type is used, the *K* and *Alpha* values fields in the [Chromatogram - GPC Results](#) tab are inactive, because these values are loaded from the calibration results.

## 5.7 Export

To transfer data from **Clarity** to other programs, the simplest way is through the **Windows** clipboard, i.e. using the *Copy* (**Ctrl** + **C**) and *Paste* (**Ctrl** + **V**) commands on the selected table area.

The *Export Chromatogram* options are the same as in **Standard** mode, (for more details see also chapter *Export Chromatogram*) see the **Clarity Reference Guide** chapter **Export Chromatogram**.

### 5.7.1 Export of graphs

The *Chromatogram* (including overlaid calibration curve), *MW Distribution* or *Cumulative MW Distribution* graphs can be transferred to other programs using the *Export*, *Save As Picture to Clipboard* or *Save As Picture to File* commands. The actually displayed graph pane will be copied to clipboard or saved into a file in an \*.EMF vector graphic format and can be pasted or inserted to any **MS Office** document. It is advisable to apply all desired formatting to the picture (fonts, sides ratio, etc.) completely in **Clarity** prior to performing the export command.

### 5.7.2 Export of data

The *Export Data* dialog accessible using the *Setting - Export Data* command from the *Instrument* window will change to *Export GPC Data* in **GPC** mode. The same dialog also opens using the *File - Export - Export Data* command in the *Chromatogram* window. Settings made in the *Export GPC Data* dialog will be used during automated processing if the *Export Data* checkbox is checked in the *Single Analysis - Post-run Options* tab and *Batch* dialogs.

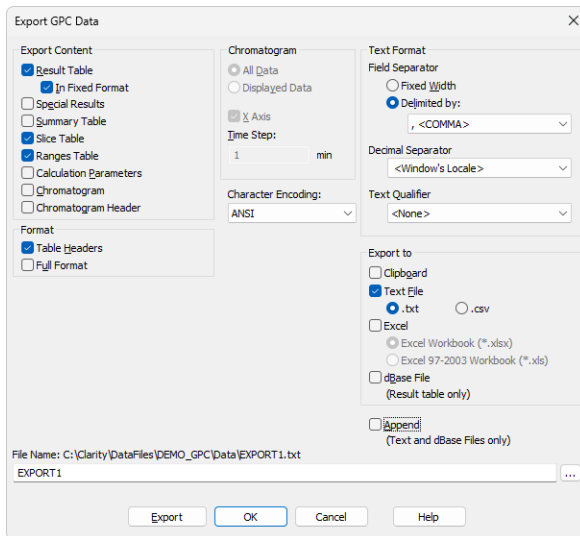


Fig. 23: Export GPC Data

---

**Caution:** Only commands different from the standard *Export Data* dialog will be described here.

### Result Table

Exports all the columns available for **Result Table**, each peak on separate line.

### Slice Table

Exports all the columns available for **Slice Table**, continuously for all peaks. (*Peak No.* will be exported as one of the columns).

### Ranges Table

Exports the **Ranges Table**.

### Chromatogram

Exports the time/signal values according to the settings in the *Chromatogram* area.

### Chromatogram Header

Exports the chromatogram information including the calibration file details.

All other options behave in the same way as in standard mode, (for more details see also chapter Export Data)see the **Clarity Reference Guide** chapter **Export Data**.

## 5.7.3 Export Summary Table

The summary table is exported as a \*.TXT file from the *Chromatogram* window using the *File - Export - Export Summary Table* command. The export is performed according to the actual setup used for the **Summary Table**. The setup can be changed using the *Setup Columns...* and *Summary Options...* commands from the table local menu.

## 5.8 Report Setup

While in the **GPC** mode, the *Report Setup* command still opens the *Report Setup* dialog, though with some changes on particular tabs. The [Report Header](#), [Method](#), [Chromatogram](#), [Calibration](#) and [Results](#) tabs are different from standard mode and will be described here.

### 5.8.1 Report Setup - Report Header

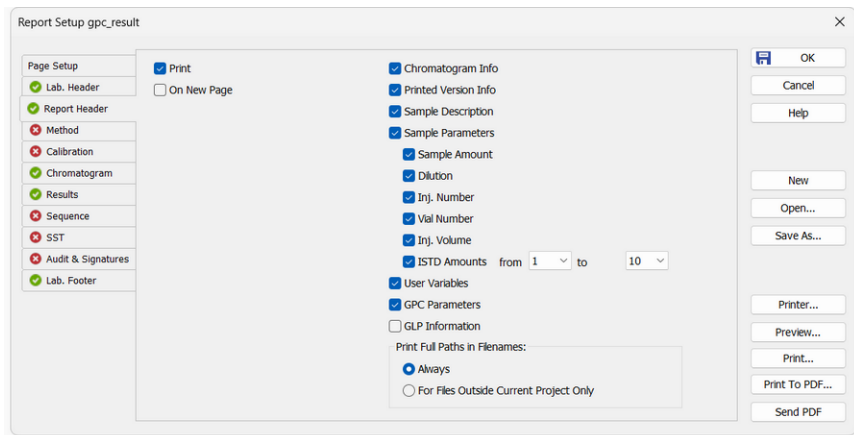


Fig. 24: Report Setup - Report Header (GPC)

#### GPC Parameters

*GPC Parameters* checkbox adds the detailed info about GPC parameters to the printed report. This info comes from the chromatogram header and is defined in the [Sequence](#) or [Single Analysis](#) dialog. The fields reported are **K** and **Alpha**.

### 5.8.2 Report Setup - Method

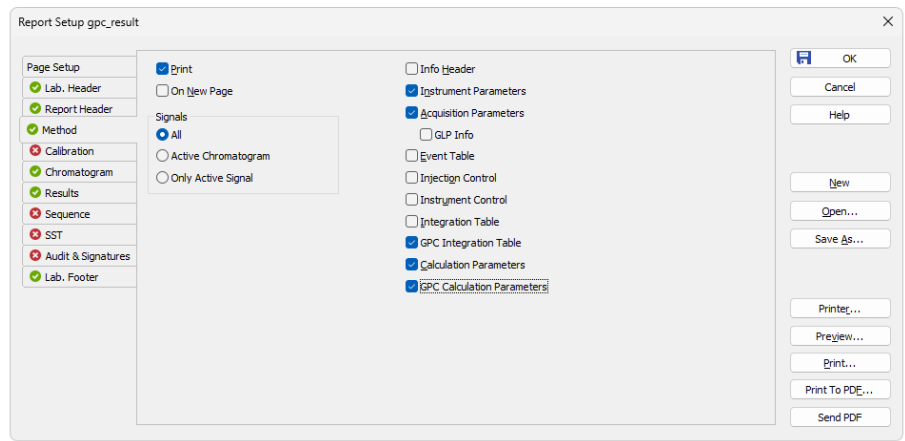


Fig. 25: Report Setup - Method (GPC)

The added *GPC Integration Table* and *GPC Calculation Parameters* checkboxes enable the display of corresponding [GPC Integration](#) and [GPC Calculation](#) tabs in the *Method Setup* dialog.

## 5.8.3 Report Setup - Calibration

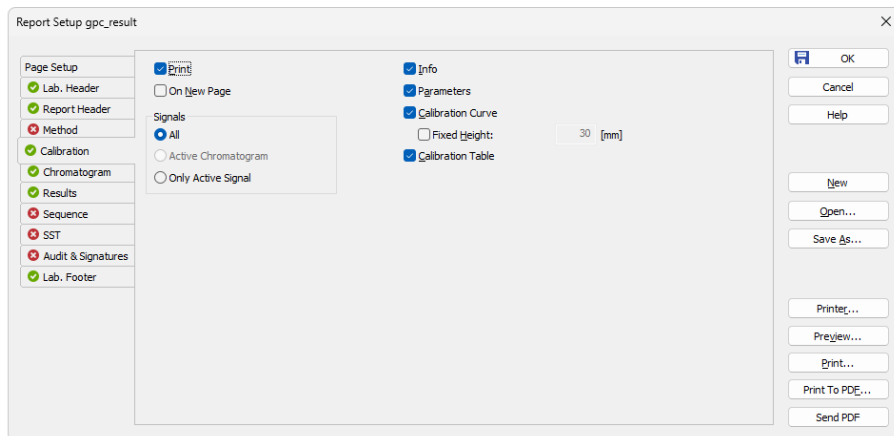


Fig. 26: Report Setup - Calibration (GPC)

### Calibration Curve

Prints the calibration curve displayed in the *Calibration* window.

### Fixed Height

If the *Fixed Height* checkbox is checked, the chromatogram will be printed with a fixed height instead of the fixed ratio 2:3. The permitted lower height range is *30 mm*, the upper height range is not set - the graph will be scaled to the page height if larger than the page itself.

### Calibration Table

Prints the **Calibration Summary Table**. This checkbox is equivalent to the *Summary* checkbox on the standard *Report Setup - Calibration* tab.

Other options are the same as in standard mode (for more details see also chapter Calibration).

## 5.8.4 Report Setup - Chromatogram

Report Setup gpc\_result

Page Setup

- Lab. Header
- Report Header
- Method
- Calibration
- Chromatogram
- Results
- Sequence
- SST
- Audit & Signatures
- Lab. Footer

☒ Print

☐ On New Page

Signals

☐ All

☒ Active Chromatogram

☐ Only Active Signal

Orientation

☒ Portrait

☐ Landscape

☒ Fixed Height: 70 [mm]

No. of Pages: 1

Tiled by

☐ Signals

☐ Chromatograms

☒ not Tiled

Print Range

☒ As on Screen

☐ Whole Chromatogram

☐ Both

Peaks

☐ All

☐ Only Active

☒ Chromatogram

☒ MW Distribution

☒ Show Cumulative MW Distribution

OK

Cancel

Help

New

Open...

Save As...

Print...

Preview...

Print...

Print To PDF...

Send PDF

Fig. 27: Report Setup - Chromatogram (GPC)

The printing of *Chromatogram*, *MW Distribution* or *Cumulative MW Distribution* can be individually selected by the appropriate checkboxes. All graphs are printed using the common *Orientation* settings.

The *Peaks* area will only be active if the *Tiled by - Signals* option has been selected. It will then print the *MW Distribution* and *Cumulative MW Distribution* graphs for all or only for active peak in each signal.

Other options are the same as in standard mode (for more details see also chapter Chromatogram).

## 5.8.5 Report Setup - Results

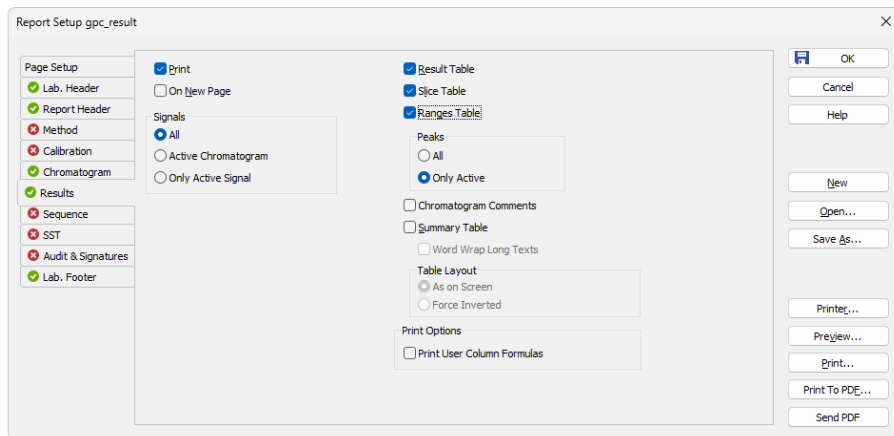


Fig. 28: Report Setup - GPC Results

The printing of *Result Table*, *Slice Table*, *Ranges Table* or *Summary Table* can be individually selected by the appropriate checkboxes. The *Slice Table* and *Ranges Table* can be printed for the active peak or for all peaks from the given signal, as set (commonly for both tables) in the *Peaks* area.

**Note:** The peak is set active by clicking on its row in the **Result Table**. During automatic printing (from *Single Analysis - Post-run Options* tab, *Sequence* or *Batch*), the first peak is considered as active.

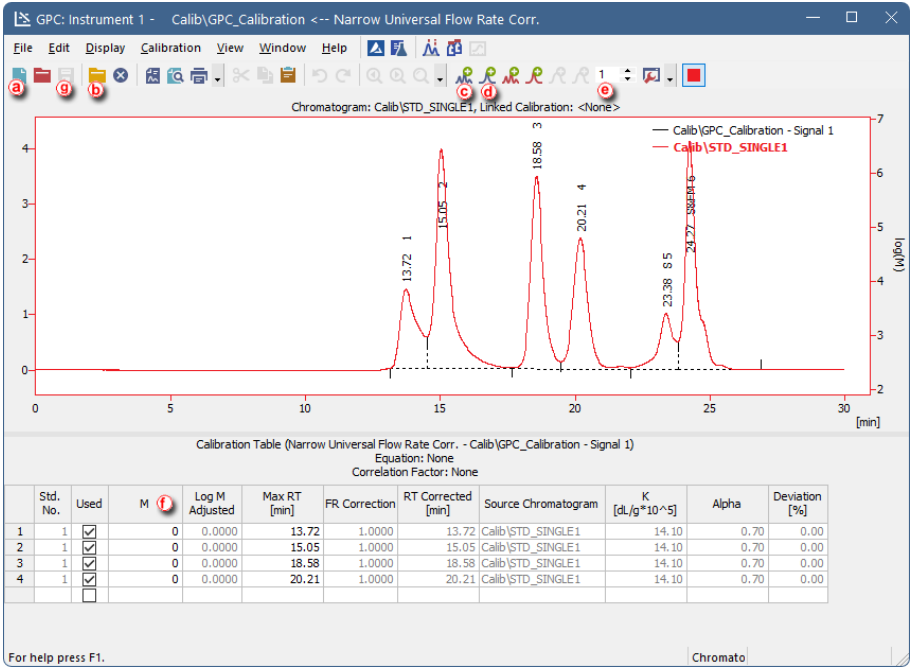
The tables are printed as configured on the display (with the exception of fonts). The setup can be changed using the *Setup Columns...* command from the table local menu, eventually by the *Summary Options...* command for the **Summary Table**.




# 6 Clarity GPC operations

Basic operating principles for the work on **Clarity Instruments** configured on use with **GPC Extension** are described in this chapter. Only topics related to **GPC** mode are discussed here, refer to the **Clarity User Guide** for detailed description of operations in standard mode.

## 6.1 Creating a GPC calibration

To be able to create a GPC calibration, you need to have a measured and integrated GPC chromatogram of a standard sample, and the *GPC* mode toggled ON by selecting the *Setting - GPC Mode* in the *Instrument* window (this is the default setting of GPC instrument).



1. Open the Calibration window: select *Window - GPC Calibration* in the *Instrument* window or click on .
2. Create a new calibration file: select *File - New* or click on  .
3. Following dialog [GPC Calibration Options](#) will show up. Here you can setup various options and *Calibration Types*.

GPC Calibration Options (Naname) ? X

GPC Calibration Options

Calibration Type  
Narrow Calibration

Number of Signals 1

Calibration Description:

☒ Use Flow Rate Correction  
☒ Use Universal Calibration  
☐ Use Simplified Computations of M Averages

NormHit based on Normal MW Distribution  
 Integral Percentages Decreasing with M

| Signal   | Flow Marker RT [min] | Curve Fit Type |
|----------|----------------------|----------------|
| Signal 1 | 0.000                | Linear         |


Recalibration Search Window 5 [%]  $K [dL/g \cdot 10^5]$  14.1

Peak Height 20 [%] Alpha 0.7




OK Cancel Help

**Caution:** Once selected, the *Calibration Type* can't be changed later.

- Click OK to create the Naname calibration. To set calibration name open the *File - Save As* dialog.
- Open integrated chromatogram of a standard: select *File - Open Standard...* or click on icon.
- Add peaks present in the chromatogram of the calibration standard to the calibration file: select *Calibration - Add All* or click on (if you have multiple peaks in your chromatogram) or select *Calibration - Add Narrow Peak* or click on to add desired peak from your standard.



**Note:** If you have multiple chromatograms of standards, repeat these steps to add the desired peaks: open the standard and click *Add Narrow Peak*, then open another standard and click *Add Narrow Peak* again, repeat it for all standards. The number in field  is connected to the number of used standard, and not to the concentration level. Adding a peak on an already used number will overwrite values for this number.

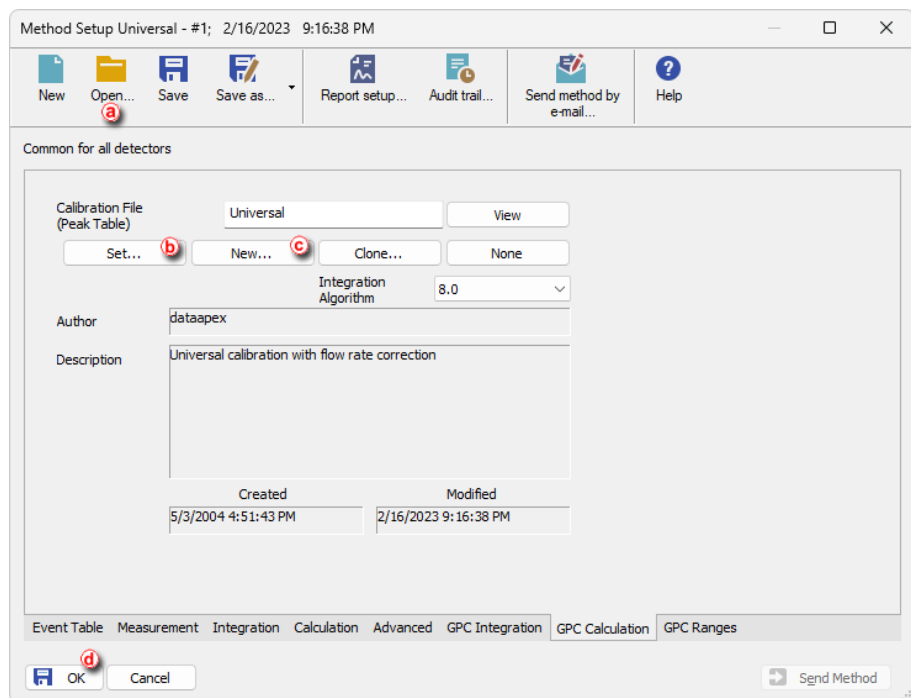
**Note:** When using any type of Broad calibration, *Add Broad Peak* will be enabled instead of *Add Narrow Peak*.

7. Fill in the appropriate molecular weight values for the respected peaks into the *M* column  .
8. Save the calibration file: from *File - Save* or click on   .

## 6.2 Setting a GPC calibration in the method

Setting a GPC calibration in the method allows you to automatically calibrate all chromatograms measured using such method.

1. Open the *Method Setup* dialog on *GPC Calculation* tab: for example by selecting *Method -  GPC Calculation...* in the *Instrument* window.
2. Open the method by selecting the *Open...* icon  .

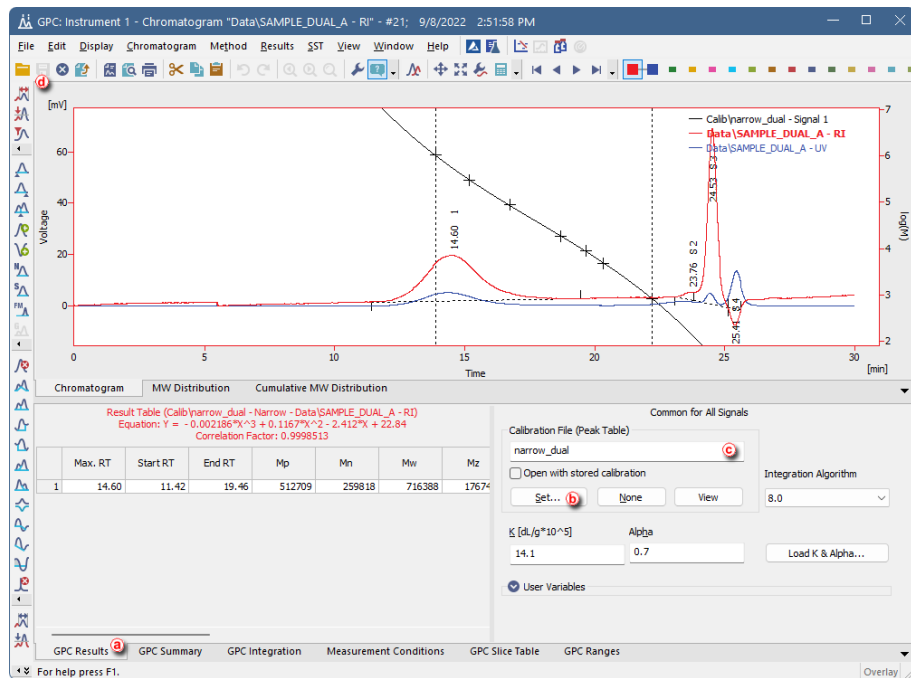


3. Click the **Set...** button **(b)** to set a GPC calibration file, or create a new one by clicking the **New...** button **(c)**.
4. Click **OK** **(d)** to apply and save the changes made to the method.

### 6.3 Applying a GPC calibration to a chromatogram

If the calibration file is not assigned to the method, the measured chromatogram will not have it linked either. To link a calibration file to a chromatogram do as follows:

1. Switch to the *GPC Results* tab **(a)** at the bottom part of the *Chromatogram* window.



- Click the **Set...** button (b), in the *Open GPC Calibration* dialog select calibration file you want to link and click **OK**.
- Check that the *Calibration File (Peak Table)* field contains the name of the calibration file (c).

*Note:* When no calibration file is linked to a chromatogram, the field *Calibration File (Peak Table)* contains inscription (*None*).

- Save the chromatogram by selecting **File - Save** or clicking on **Save** (d).