



## AXCEND FOCUS LC

Clarity Control Module

ENG

Code/Rev.: M246/80B

Date: 2024-02-14

Phone: +420 251 013 400

[clarity@dataapex.com](mailto:clarity@dataapex.com)

[www.dataapex.com](http://www.dataapex.com)

DataApex Ltd.  
Petrzilkova 2583/13  
158 00 Prague 5  
Czech Republic

Clarity<sup>®</sup>, DataApex<sup>®</sup> and <sup>®</sup> are trademarks of DataApex Ltd. Microsoft<sup>®</sup> and Windows<sup>TM</sup> are trademarks of Microsoft Corporation.

*DataApex reserves the right to make changes to manuals without prior notice. Updated manuals can be downloaded from [www.dataapex.com](http://www.dataapex.com).*

Author: SF

# Contents

<b>1 Axcend Focus LC</b>	<b>1</b>
<b>2 Requirements</b>	<b>2</b>
2.1 Software requirements	2
2.2 Hardware requirements	2
<b>3 Installation procedure</b>	<b>3</b>
3.1 Installing Correct Version of Agilent ICF	3
3.2 Network connections	4
3.3 Clarity Configuration	5
3.4 Installation Qualification of Agilent ICF	9
<b>4 Using Axcend Focus LC</b>	<b>11</b>
4.1 Device Monitor	11
4.2 Method Setup - AS	12
4.3 Method Setup - Acquisition	13
4.4 Method Setup - Advanced	14
<b>5 Troubleshooting</b>	<b>15</b>
5.1 Specific Problems	15

To facilitate the orientation in the **Axcend Focus LC** manual and **Clarity** chromatography station, different fonts are used throughout the manual. Meanings of these fonts are:

*Open File* (italics) describes the commands and names of fields in **Clarity**, parameters that can be entered into them or a window or dialog name.

WORK1 (capitals) indicates the name of the file and/or directory.

ACTIVE (capital italics) marks the state of the station or its part.

Chromatogram (blue underlined) marks clickable links referring to related chapters.

The bold text is sometimes also used for important parts of the text and the name of the **Clarity** station. Moreover, some sections are written in format other than normal text. These sections are formatted as follows:

---

**Note:**           Notifies the reader of relevant information.

---

**Caution:**       Warns the user of possibly dangerous or very important information.

---

**I Marks the problem statement or trouble question.**

**Description:**   Presents more detailed information on the problem, describes its causes, etc.

**Solution:**       Marks the response to the question, presents a procedure how to remove it.

# 1 Axcend Focus LC

This manual describes the use of the **Focus LC**, a portable HPLC device, with the **Clarity** software ver. **8.8 and later**.



*Fig. 1: Axcend Focus LC System*

The control module enables direct control of the instrument over Local Area Network (LAN). Direct control means that the instrument can be completely controlled from the Clarity environment. The Instrument method controlling the analysis conditions will be saved in the measured chromatograms.

## 2 Requirements

### 2.1 Software requirements

**Clarity** (p/n C50) Installation USB with **LC control** module (p/n A24).

**Agilent ICF** and **Axcend Focus LC** require **Microsoft .NET version 4.7.2** for correct installation and operation. This version is already installed on majority of PCs. Nonetheless you will be notified during the installation if your PC is missing any version of **Microsoft .NET** - then follow the instructions there. For complete list of .NET requirements, see the **.NET Framework System Requirements** on Microsoft web page.

Supported operating systems:

- **Windows 8.1 (32/64 bit)**
- **Windows 10 (32/64 bit)**
- **Windows 11 (64 bit)**

---

*Note:* Although Agilent ICF does not state other **Windows OS** between supported, the system may work on other OS versions as well e.g, Windows 7 SP1 (32/64 bit). This functionality is not guaranteed though.

---

**Caution** Before installing **Clarity**, make sure that your **Windows** are updated to the latest version.

### 2.2 Hardware requirements

- Version of firmware must be compatible with the **Agilent ICF** installed with **Clarity**.
- LAN interface installed on PC is required.

## 3 Installation procedure

**Axcend Focus LC** is not part of the **Clarity Typical** installation. To install it, select the *Full* installation or *Custom* installation with **Axcend Focus LC** option selected.

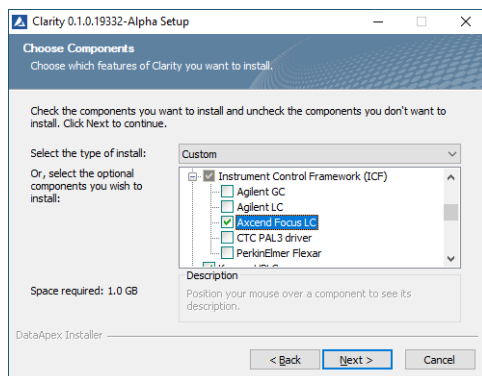


Fig. 2: Custom installation of Clarity

### 3.1 Installing Correct Version of Agilent ICF

Clarity expects a specific version of Agilent ICF. Because other programs may also be using Agilent ICF, it is possible they've installed a different version than is supported by Clarity. In that case in the installation you will be prompted to reinstall it in order to install correct version. Going forward with this step is crucial for correct functionality of Clarity and Agilent ICF.

This situation may also occur during Clarity update when the new version contains updated ICF version.

**Note:** This reinstallation of Agilent ICF may cause that other programs using it, may not function properly.

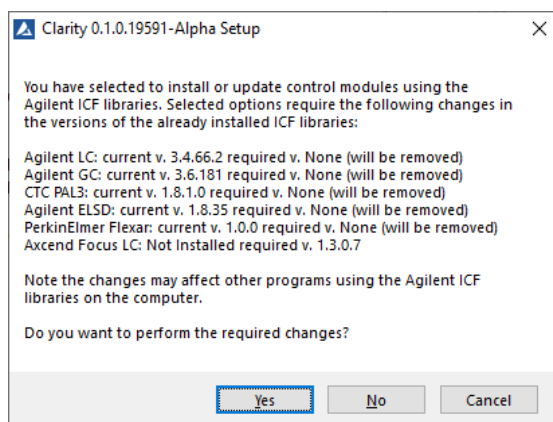


Fig. 3: Installing correct version of Agilent ICF

## 3.2 Network connections

The instruments supported by **Agilent ICF** has to be connected to a site network by LAN. It is recommended to attach the hardware directly to the PC avoiding hubs, switches etc. When using a switch or a hub, multiple hardware can be connected to one PC. Always contact your local LAN administrator who can make the appropriate settings.

**Caution:** **Cross LAN** cable is primarily used for the direct connection of the instrument and the PC. This cable can also be used for the connection of the device to the switch or network socket, but with older switches, the **straight LAN** cable might be necessary.

### LAN Settings

PC: LAN card, TCP/IP protocol.

Both PC and **Axcend Focus LC** hardware should be configured on the same IP range.

### Firewall

Ensure that the firewall does not block communication from the **Axcend Focus LC** hardware.



### 3.3 Clarity Configuration

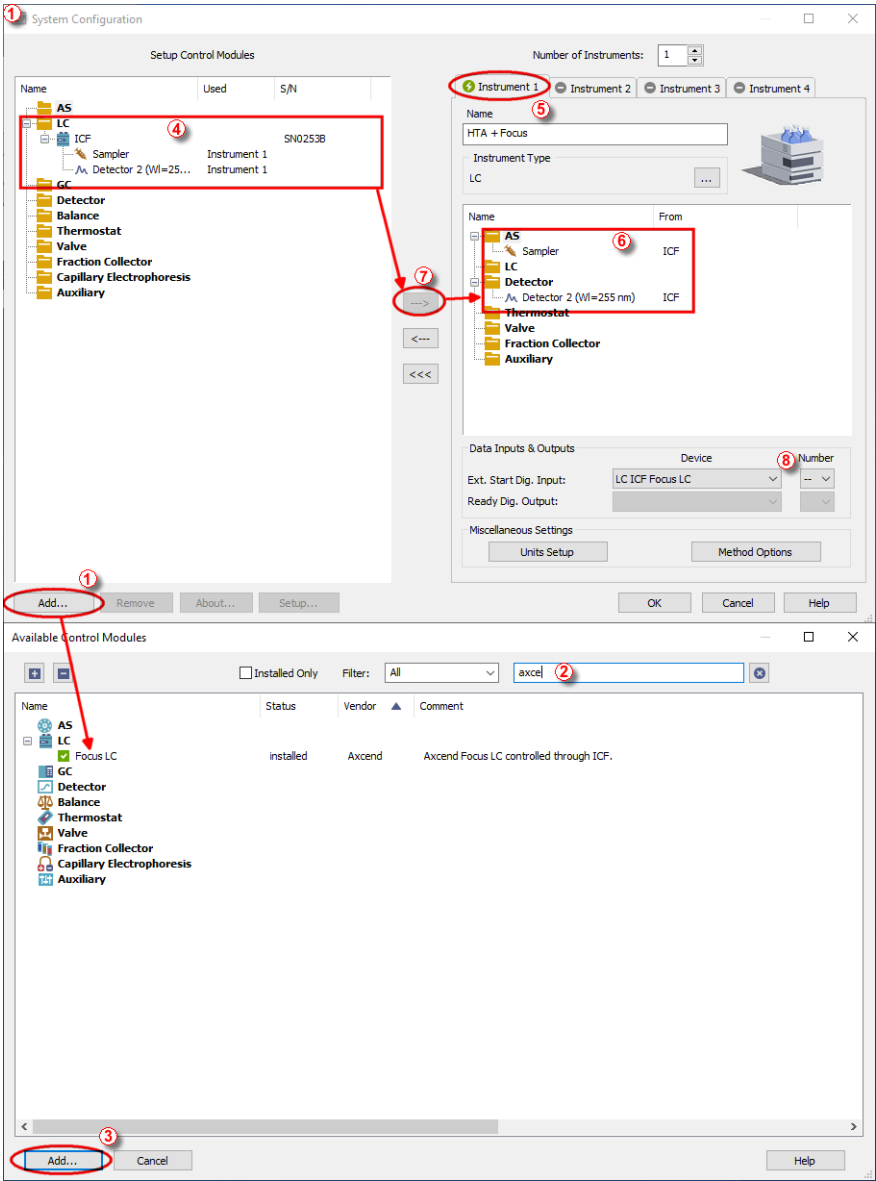

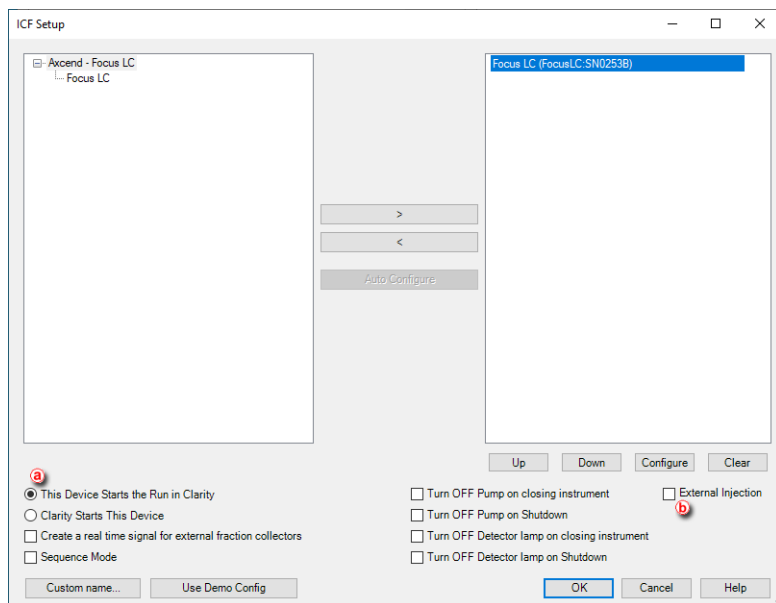


Fig. 4: System Configuration

**Caution:** Before you start **Clarity**, ensure there is not any other application active and controlling the instruments.

- Start the **Clarity** station by clicking on the  icon on the desktop.
- Invoke the **System Configuration** dialog accessible from the **Clarity** window using the *System - Configuration...* command.
- Press the **Add** button ① (See **Fig. 4** on pg. 5.) to invoke the **Available Control Modules** dialog.
- You can specify the searching filter ② to simplify the finding of the driver.
- Select the **Focus LC** item from the **LC** section and press the **Add** ③ button.

The **ICF Setup** dialog will appear.



*Fig. 5: ICF Setup for Focus LC*

**Note:** Press the **F1** key to display the **ICF** help with detailed description of the dialog.

**Caution:** **Focus LC** can be used with external autosampler, such autosampler should be configured to **Instrument** instead of **Sampler** submodule of **Focus LC**. Further necessary differences in configuration are described in the text below.

- *This Device Starts the Run in Clarity* ① should always be chosen. Regardless whether external autosampler is used or not.
- *External Injection* ② must only be enabled when using external autosampler.

- Click on the *Configure* button in the *ICF Setup* dialog and the *Configure Focus LC* dialog is displayed for entering the connection parameters.

*Note:* The *Sequence Mode* should be disabled since the device do not have resources to work with it.

*Note:* The *Custom name...* button can be used to change the name of the module in the *System Configuration* window.

Fig. 6: *Configure Focus LC* dialog

- Fill in the *IP address* and click *Load Configuration from Device* button to retrieve parameters from the device then click *OK* button.

*Note:* Press the *F1* key to display the **Axcend Focus LC** help with detailed description of the dialog.

- The **Focus LC system** will appear in the *Setup Control Modules* list ④ of the *System Configuration* dialog.
- Drag and drop the **Focus LC** icon from the *Setup Control Modules* list ④ on the left side of the *System Configuration* dialog to the desired *Instrument* ⑤ tab on the right side ⑥ (or use the ---> button ⑦ to do so).
- Set the *Ext. Start Dig. Input* ⑧ to "-" - ⑧ to assure correctly synchronized start of the analysis. This applies to both situations; with and

without an external autosampler.

---

*Note:* The configuration dialog of the **Focus LC System** can be displayed any time by double-clicking on its icon or using the *Setup* button.

### 3.4 Installation Qualification of Agilent ICF

**Agilent ICF** is an external program developed by Agilent and for that reason it must be validated using their utility. If you have installed Clarity with Agilent ICF, **the IQ is valid only if successful validation of ICF is attached**.

The validation of ICF can be performed directly from the ***IQ Report***.

**Caution:** If Clarity expects ICF installation then **IQ** also. And if for some reason the ICF installation is not found, the *Installation Qualification Test* is automatically **FAILED**. To resolve this situation, it is necessary to re-install **Agilent ICF** during Clarity installation.

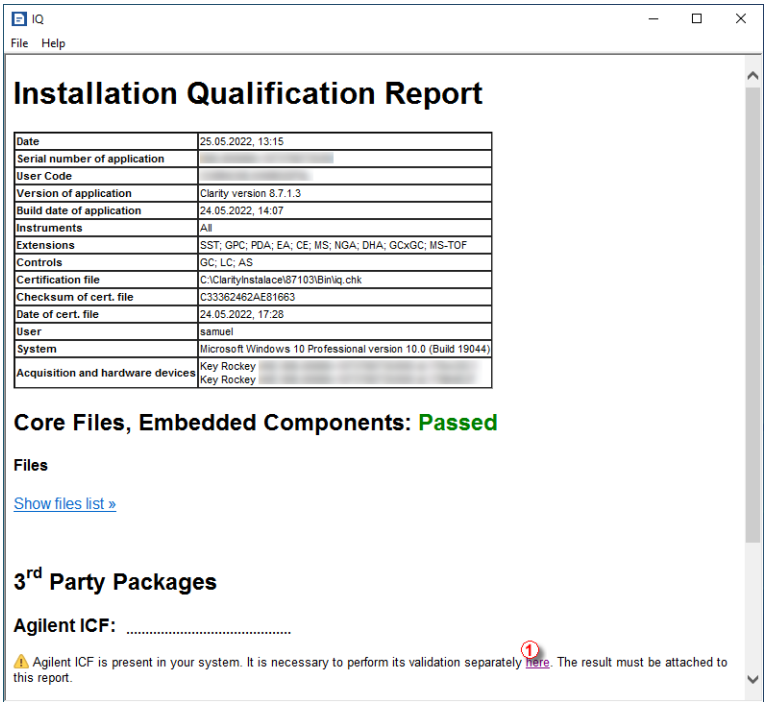


Fig. 7: IQ Report with ICF installation present

Press the link "here" ① and confirm opening of SFVTool.exe (up to 2 times). *Agilent Software Verification Tool* window will be opened.

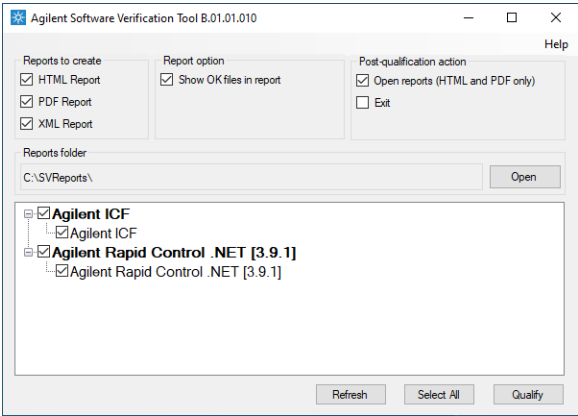


Fig. 8: Agilent Software Verification Tool

Select in which format reports should be generated and whether they should automatically open once IQ is completed. Click *Qualify* button to start the ICF IQ. Installed drivers and their versions are listed at the end of the report.. Address field of the generated report displays the location of the actual report.

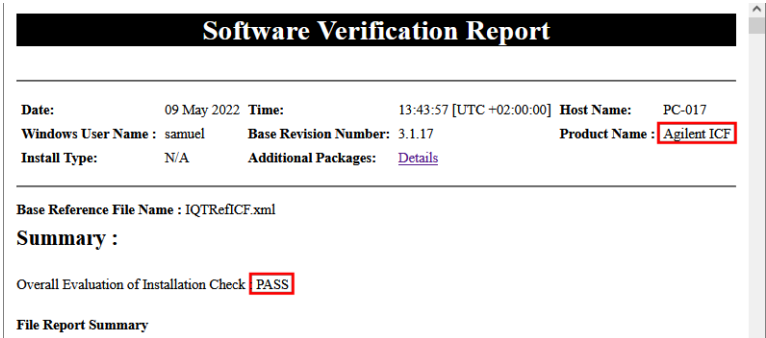


Fig. 9: ICF Report - PASS


## 4 Using Axcend Focus LC


There are multiple places for setting the parameters of the **Axcend Focus LC** in the **Clarity**:

- the [Device Monitor](#)
- the [Method Setup](#)

**Caution:** Before opening the *Instrument* window with configured **ICF** devices, ensure there is not any other PC connected to the device. Otherwise error will occur during the connection.

### 4.1 Device Monitor

The *Device Monitor* window can be invoked by the *Analysis - Device Monitor* command from the *Instrument* window or using the **Device Monitor**  icon.

Clicking the ? button  will invoke the **Axcend Focus LC** help dialog.

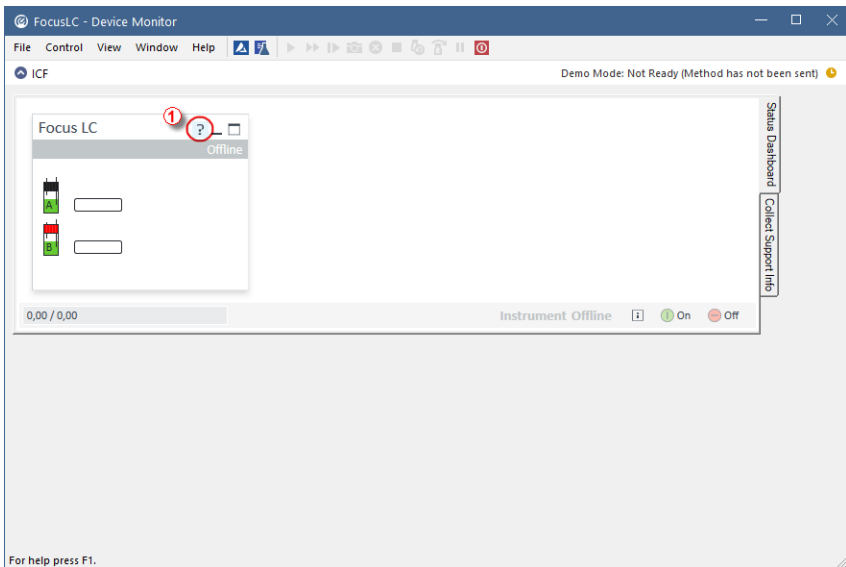


Fig. 10: Device Monitor

# 4.2 Method Setup - AS

The *Method Setup - AS* tab serves for setting of *Sample Port* for *Injector*.

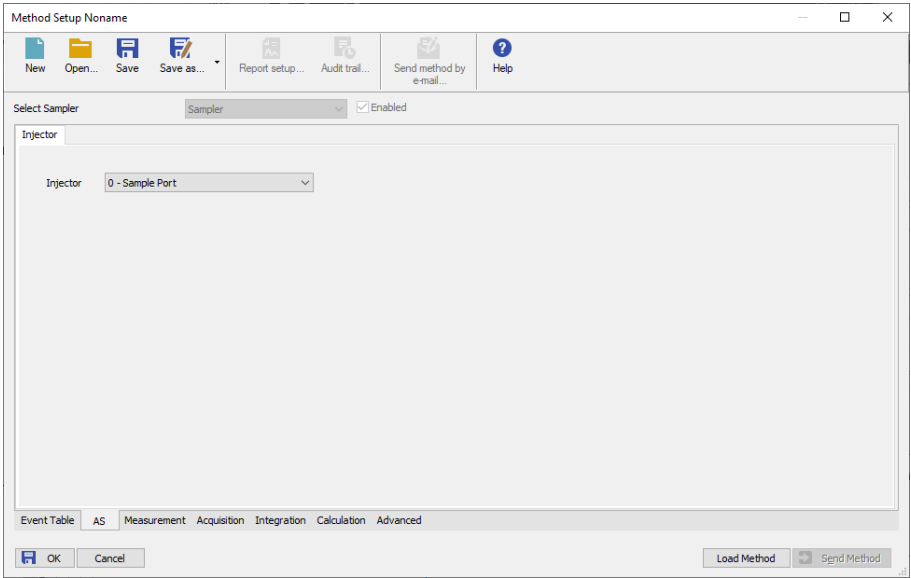


Fig. 11: Method Setup - AS



4.3 Method Setup - Acquisition

The *Method Setup - Acquisition* tab serves for setting of majority of the parameters for **Axcend Focus LC**, including flow, pressure, composition, and selecting detectors.

Press *F1* key to display detailed help for **Axcend Focus LC**.

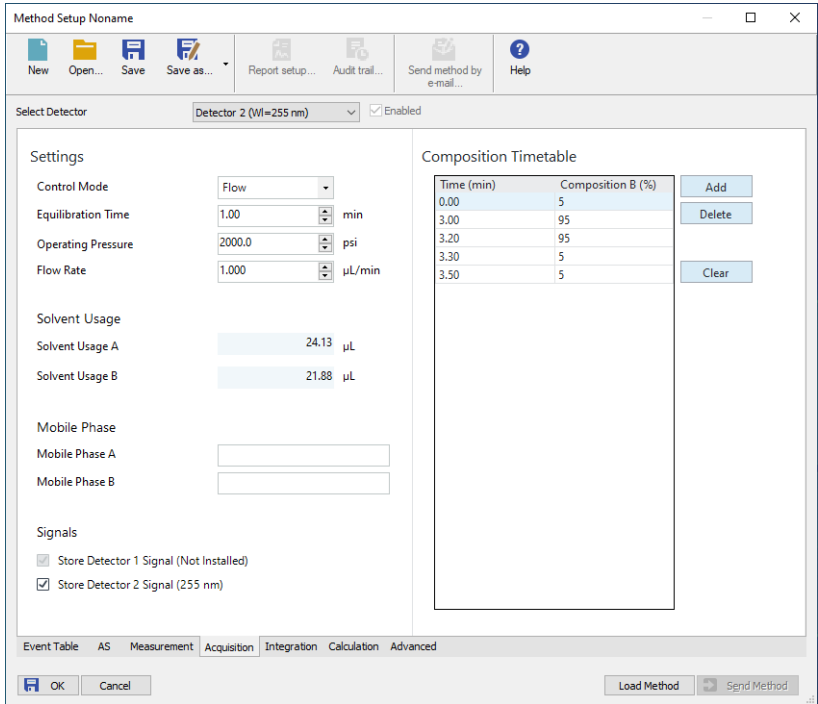


Fig. 12: Method Setup - Acquisition

### 4.4 Method Setup - Advanced

The *Method Setup - Advanced* tab serves for setting the usage of auxiliary signals of the **Axcent Focus LC** device.

The list of available auxiliary signals is shown in the table in the lower part of the dialog. By checking the checkbox in the *Store* column for the particular row, the given auxiliary signal will be stored into the measured chromatogram.

Method Setup Noname

NewOpen...SaveSave as...Report setup...Audit trail...Send method by e-mail...Help

Common for all detectors

Subtraction

ChromatogramNone

MatchingNo Change

Set...None

Column Calculations

Unretained Time0min

Column Length50mm

Statistical Moments

From Width at 50%

	Auxiliary Signal	Store
1	Flow Rate - Focus LC	<input type="checkbox"/>
2	Pressure A - Focus LC	<input type="checkbox"/>
3	Syringe A - Focus LC	<input type="checkbox"/>
4	Pressure B - Focus LC	<input type="checkbox"/>
5	Syringe B - Focus LC	<input type="checkbox"/>

User Variables

Variable 1

NameMethodUserVar1

Value0

Variable 2

NameMethodUserVar2

Value0

Variable 3

NameMethodUserVar3

Value0

Event TableASMeasurementAcquisitionIntegrationCalculationAdvanced

OKCancelLoad MethodSend Method

Fig. 13: Method Setup - Advanced

- 14 -

# 5 Troubleshooting

When the remedy for some problem cannot be discovered easily, the recording of communication between **Clarity** and **Axcend Foxus LC System** control module can significantly help the **DataApex** support to discover the cause of the problem. The recordings can be found in C:\CLARITY\CFG\DEBUG\_LOGS\PGMLOG.

In case you cannot establish communication with Agilent ICF controlled instruments, please review the following issues:

## Check the network connection using the Ping command

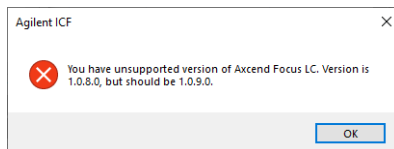
The problem in communication between **Clarity** and Axcend instrument may be caused by wrong network configuration, firewall preventing the connection, etc. Run the command line in Windows (for example by pressing the **Windows key** together with the **R** key, in the displayed *Run* window type *cmd* and press *Enter*).

In the command line type ping <ip-adress-of-instrument> or <hostname> and press *Enter*. The *IP Adress (hostname)* is the same you entered in the ICF;Setup dialog.

## 5.1 Specific Problems

### Clarity can't be run and it displays "Agilent ICF is not installed correctly." message.

**Cause:** The cause of the problem is that the Agilent ICF has a different version than expected by Clarity. It can typically happen when other software also using Agilent ICF decides to reinstall it. Thus next time Clarity expects different version than is installed.



**Solution:** Solution is to reinstall Agilent ICF and Axcend Focus LC during Clarity installation. Follow steps described in the chapter "**Installation procedure**" on pg. 3.