



DEMO GCXGC MODULATOR

Clarity Control Module

ENG

Code/Rev.: M205/80B

Date: 2024-02-14

Phone: +420 251 013 400

clarity@dataapex.com

www.dataapex.com

DataApex Ltd.
Petrzilkova 2583/13
158 00 Prague 5
Czech Republic

Clarity[®], DataApex[®] and [®] are trademarks of DataApex Ltd. Microsoft[®] and Windows[™] are trademarks of Microsoft Corporation.

DataApex reserves the right to make changes to manuals without prior notice. Updated manuals can be downloaded from www.dataapex.com.

Author: MP

Contents

- 1 GCxGC Control Module 1**
- 2 Requirements 2**
- 3 Installation Procedure 3**
 - 3.1 Clarity Configuration 4
- 4 Using the control module 6**
 - 4.1 Method Setup - Aux - Properties 7
 - 4.2 Device Monitor 8
 - 4.3 DataApex UNI Setup 9

To facilitate the orientation in the **Demo GCxGC Modulator** manual and **Clarity** chromatography station, different fonts are used throughout the manual. Meanings of these fonts are:

Open File (italics) describes the commands and names of fields in **Clarity**, parameters that can be entered into them or a window or dialog name.

WORK1 (capitals) indicates the name of the file and/or directory.

ACTIVE (capital italics) marks the state of the station or its part.

Chromatogram (blue underlined) marks clickable links referring to related chapters.

The bold text is sometimes also used for important parts of the text and the name of the **Clarity** station. Moreover, some sections are written in format other than normal text. These sections are formatted as follows:

Note: Notifies the reader of relevant information.

Caution: Warns the user of possibly dangerous or very important information.

I Marks the problem statement or trouble question.

Description: Presents more detailed information on the problem, describes its causes, etc.

Solution: Marks the response to the question, presents a procedure how to remove it.

1 GCxGC Control Module

This manual describes the setting of the **Demo GCxGC Modulator**.

The control is performed via the **UNI Ruby** control module and the **Demo GCxGC Modulator** script.

2 Requirements

- **Clarity** Installation USB with appropriate GCxGC Control (p/n A36) license allowed.

3 Installation Procedure

3.1 Clarity Configuration

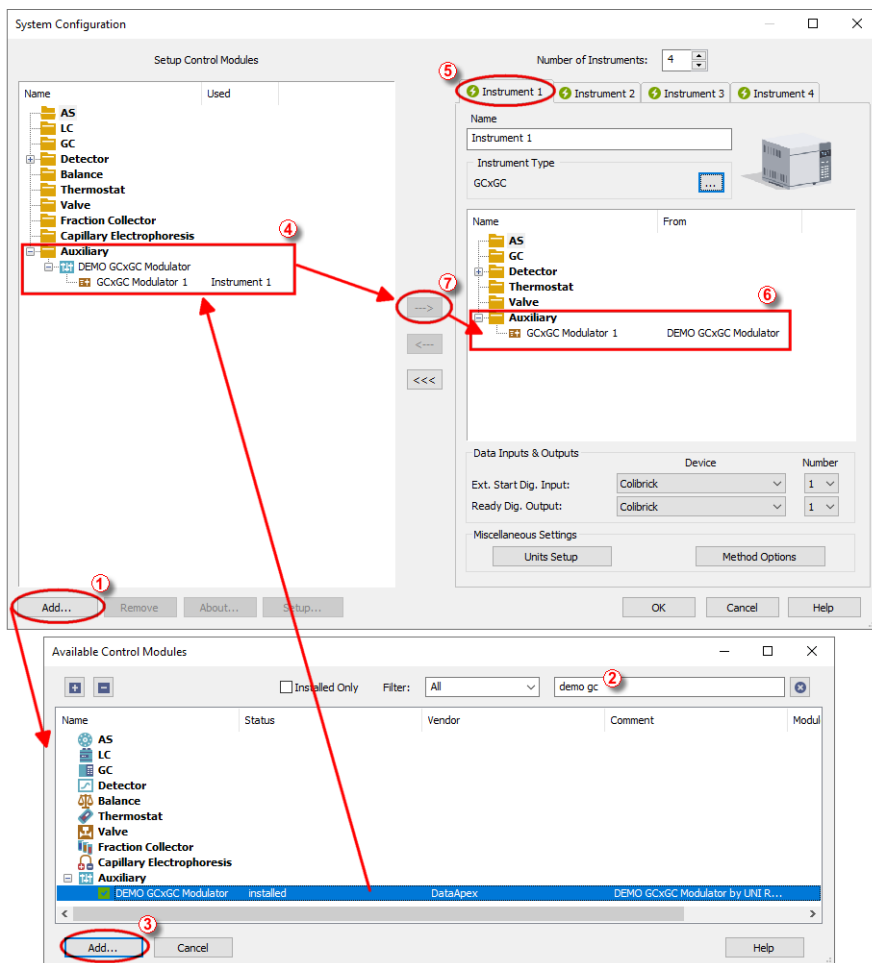



Fig. 1: How to Add Demo Gcxgc Modulator

- Start the **Clarity** station by clicking on the  icon on the desktop.
- Invoke the *System Configuration* dialog accessible from the *Clarity* window using the *System - Configuration...* command.
- Press the **Add** button (① on **Fig. 1** on pg. 4.) to invoke the *Available Control Modules* dialog.
- You can specify the search filter ② to simplify the finding of the driver.

- Select the correct item and press the **Add** (③ on **Fig. 1** on pg. 4.) button. Each device with already created UNI profile should have its own item named accordingly in the **Available Control Modules** dialog. Generic (or newly created) **UNI Ruby** device is added from the Auxiliary group.
- The **DataApex UNI Setup** dialog will appear.

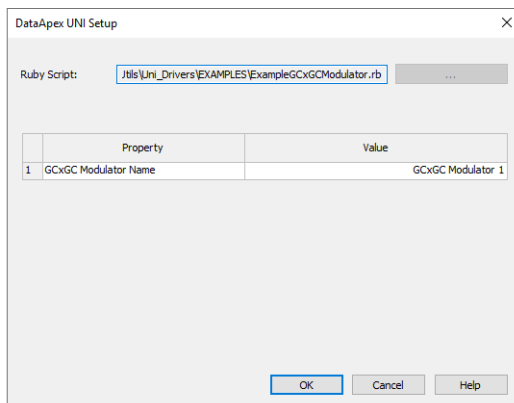


Fig. 2: DataApex UNI Setup - Demo Gcxgc Modulator

- You may fill in the custom *Device Name*.

Note: The *DataApex UNI Setup* dialog is described in detail in the chapter "**DataApex UNI Setup**" on pg. 9.

- The **Demo GCxGC Modulator** item ④ will appear in the *Setup Control Modules* list of the *System Configuration* dialog.
- Drag the appropriate item from the *Setup Control Modules* list on the left side to the desired *Instrument* tab ⑤ on the right side ⑥, or click on the <--> button ⑦.

4 Using the control module

After adding and setting up the new device one or more new tabs will appear in the *Method Setup* dialog depending on the type of the instrument. A new section enabling the monitoring of the current auxiliary state will be also created in the *Device Monitor* window.

4.1 Method Setup - Aux - Properties

The *Method Setup - Aux* tab is used for preparing and editing the instrument method for various different devices, for example **Demo GCxGC Modulator**.

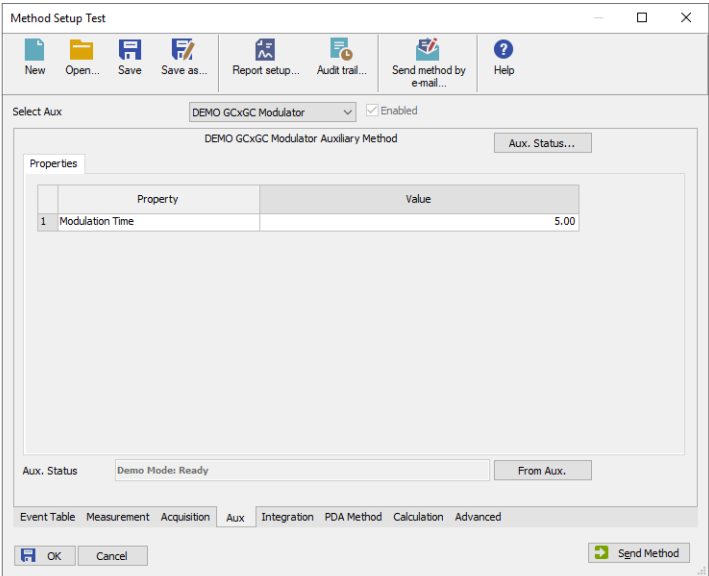


Fig. 3: Method Setup - Aux - Properties

Modulation Time

Defines the time (in seconds [s]) used for modulation.

4.2 Device Monitor

Device Monitor - GCxGC Modulator

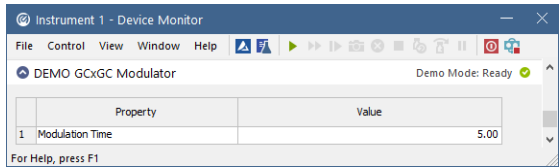


Fig. 4: Device Monitor - GCxGC Modulator

Modulation Time

Displays *Modulation Time* for current method. The value is in seconds.

4.3 DataApex UNI Setup

The appearance of the *DataApex UNI Setup* dialog depends on the presence of the selected Ruby Script - if the script is not present, only the *Ruby Script* field is visible.

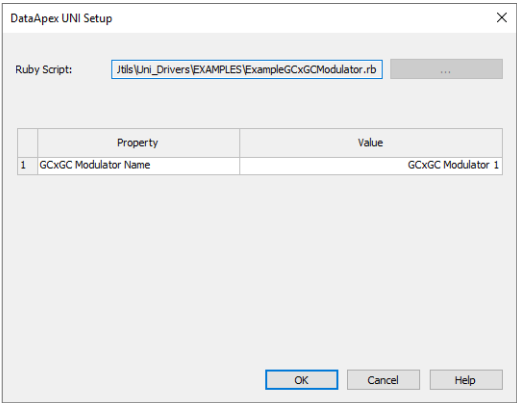


Fig. 5: DataApex UNI Setup - Demo gcxgx modulator

Ruby Script

Displays the selected Ruby Script. The correct script for the **Demo GCxGC Modulator** instrument can be found in the UTILS/UNI_DRIVERS/ subdirectory (accessible through the button) of the **Clarity** installation folder (C:\CLARITY\BIN by default).

Instrument Name

Allows you to set the custom name of the instrument. This name (entered into the *Value* column) will be used throughout the **Clarity** station.